



## 60 Stockwell Avenue | Kiveton Park | S26 5QR

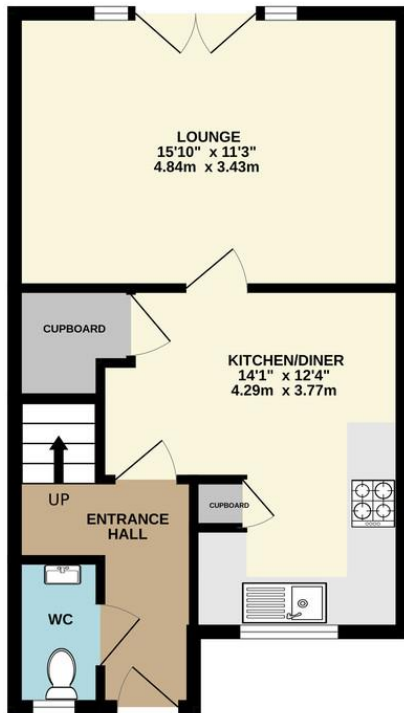
**£195,000**

Bell & Co Estates are delighted to present this THREE Bedroom end Town House on this popular estate in KIVETON PARK, beautifully presented throughout this would make a great first home. In brief the property comprises of; Entrance Hallway with Downstairs WC, Modern Dining Kitchen with white gloss units and integrated appliances with under stairs storage cupboard, large Lounge with patio doors overlooking the garden. To the upstairs is a Modern Family Bathroom, airing cupboard and Three GOOD-SIZE Bedrooms, two doubles and a single, Master complete with ENSUITE Shower Room. To the front of the property is OFF ROAD PARKING, to the side there is access through a gate to the ENCLOSED rear Garden which is mainly laid to lawn with patio area. Looking for a home to move straight into then this is the one for you! Close to local amenities, schools and transport links this home is in a prime location! Call us now to arrange your viewing.

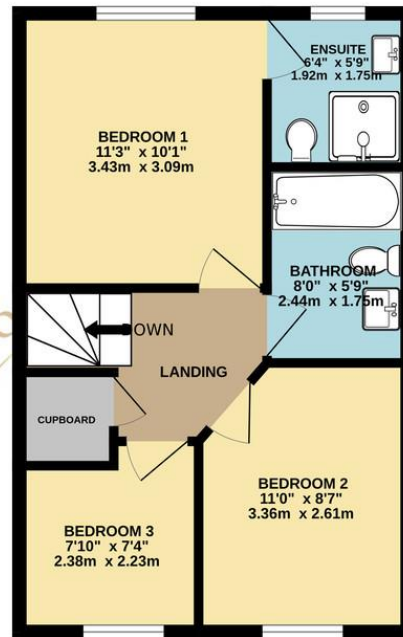
- Three Bedroom End Town House
- Modern Throughout
- Fitted Modern Dining Kitchen
- Large Lounge
- Master with Ensuite
- Modern Bathroom
- Downstairs WC
- Off Road Parking



GROUND FLOOR  
424 sq.ft. (39.4 sq.m.) approx.



1ST FLOOR  
402 sq.ft. (37.3 sq.m.) approx.



TOTAL FLOOR AREA : 826 sq.ft. (76.7 sq.m.) approx.

## Contact Details

79 Wales Road  
Kiveton Park  
Sheffield  
South Yorkshire  
S26 6RA

[www.bellcoestates.com](http://www.bellcoestates.com)

03333 580590

60, Stockwell Avenue  
Kiveton Park  
SHEFFIELD  
S26 5QR

Energy rating

C

Valid until  
**19 July 2028**

Certificate number  
**2408-5093-7383-5498-3954**

**Property type** End-terrace house

**Total floor area** 81 square metres

Agents Note: Whilst every care has been taken to prepare these sales particulars, they are for guidance purposes only. All measurements are approximate and for general guidance purposes only and whilst every care has been taken to ensure their accuracy, they should not be relied upon and potential buyers are advised to recheck the measurements