

TYRON ASH

REAL ESTATE



32 JOHN ISLIP STREET, LONDON, SW1P 4FF
POA



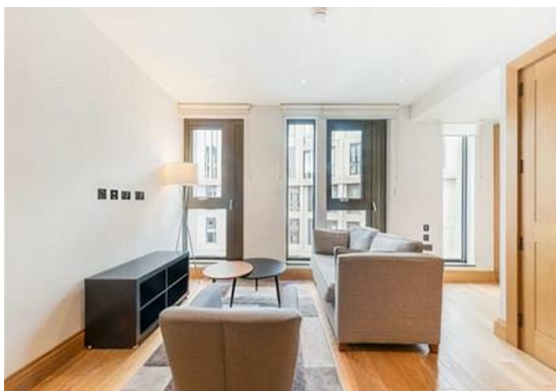
32 JOHN ISLIP STREET , LONDON, SW1P 4FF

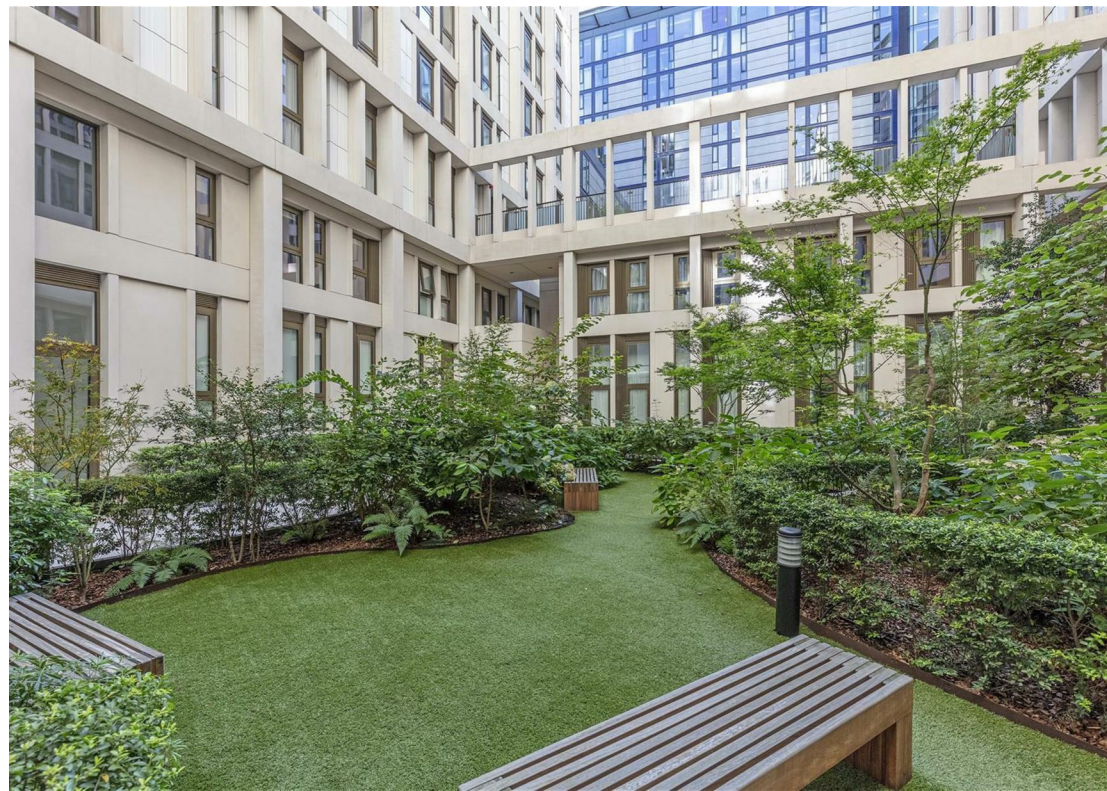
****Property Ref: BRGRA****

The BSG Group partnered with Tyron Ash Real Estate are pleased to present this is a luxurious 1 bedroom flat that is located on the 10th floor of this one-of-a-kind development "Cleland House".

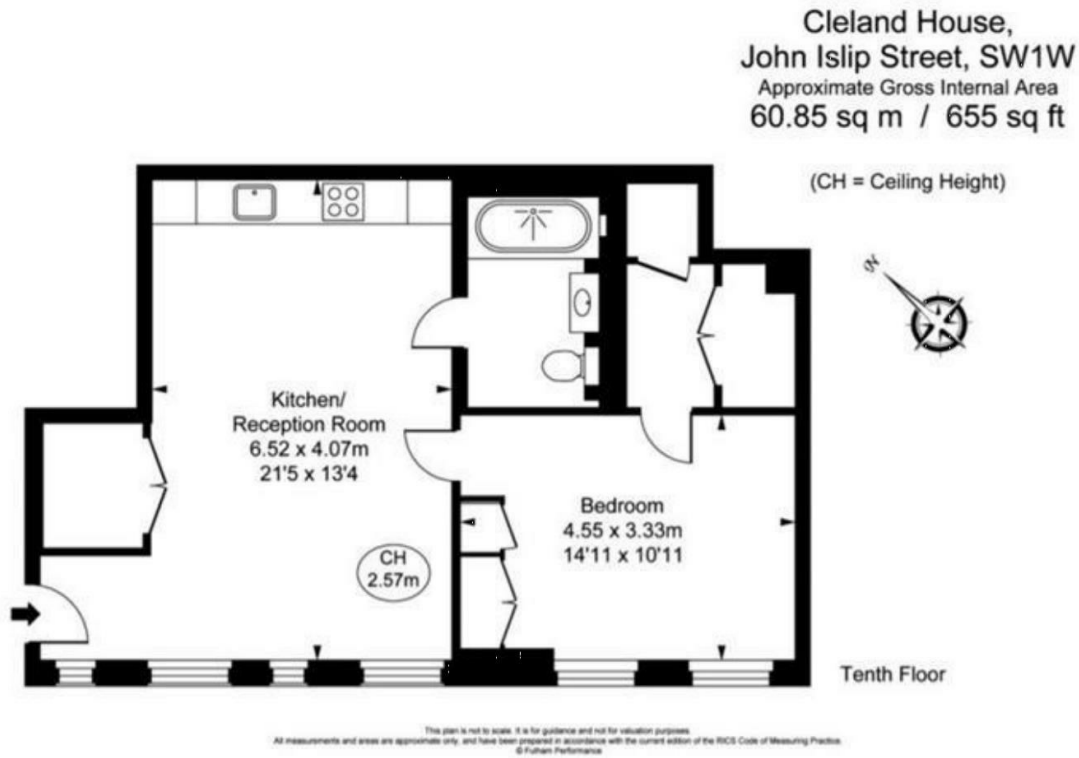
The flat has high specification throughout. It has a fully fitted kitchen. For the ultimate experience in contemporary living, the apartments boast the latest smart-home technology. The building has a 24-hour concierge service, lift access to all floors and gym facilities exclusive to Cleland House residents only.

Location: The development occupies an unrivalled central location in the City, only a stone's throw away from the London Wall and Westminster Underground Station. It is also within easy reach of some of London's top universities such as London School of Economics (LSE), University of the Arts London and King's College London.





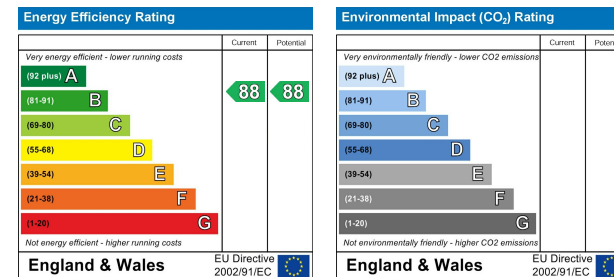
FLOOR PLAN



AREA MAP



ENERGY EFFICIENCY GRAPH



VIEWING

Please contact us on 03333 050 656 if you wish to arrange a viewing appointment for this property or require further information.

These particulars, whilst believed to be accurate are set out as a general outline only for guidance and do not constitute any part of an offer or contract. Intending purchasers should not rely on them as statements of representation of fact, but must satisfy themselves by inspection or otherwise as to their accuracy. No person in this firm's employment has the authority to make or give any representation or warranty in respect of the property.

Berkeley House, Berkeley Square, Mayfair, London W1J 6BD

03333 050 656

Info@TYRONASH.com