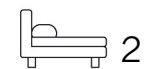




Living
made
better

Mill House
Twickenham, TW2 7SL



Asking Price £640,000

Mill House, Twickenham, TW2 7SL

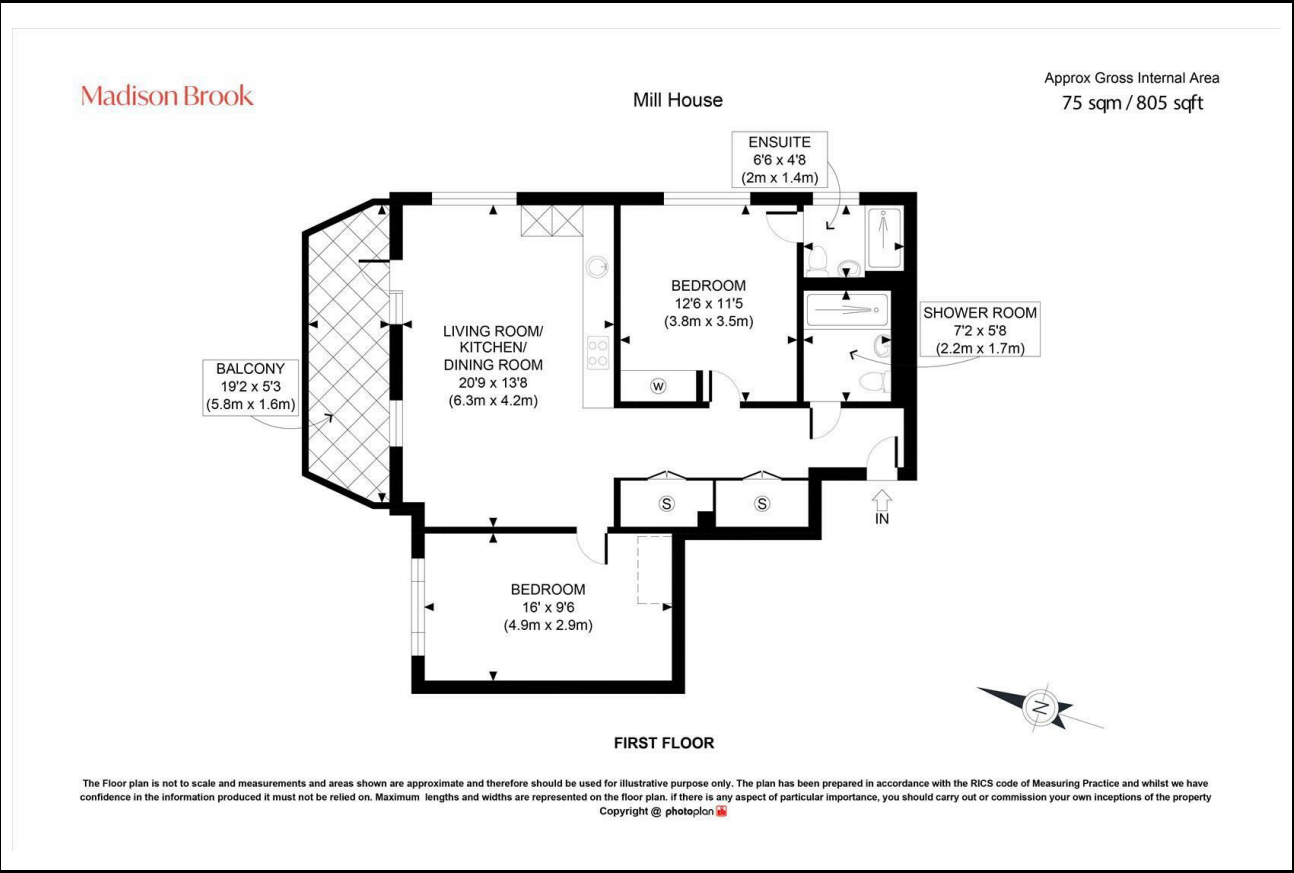
Madison Brook

Property Summary

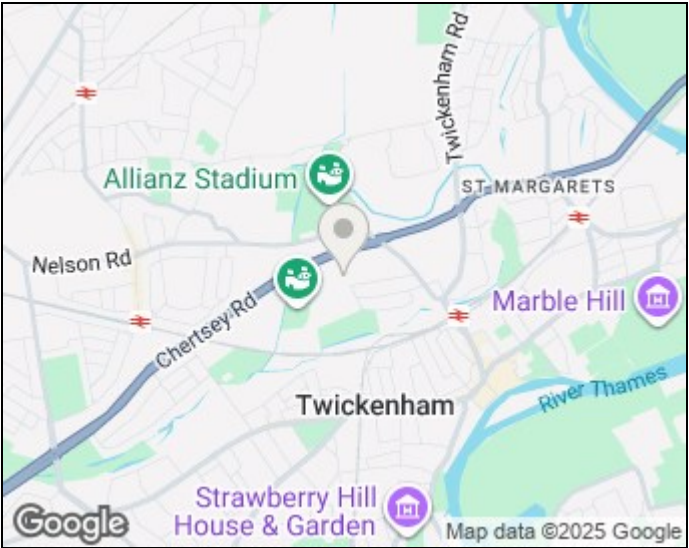
Set within the upcoming Twickenham Square development, this 805 sqft two-bedroom, two-bathroom apartment will offer bright, high-specification living throughout a spacious open-plan design. A private outdoor area, en-suite to the principal bedroom, sleek family bathroom, and with generous built-in storage to ensure both style and functionality.

Additional benefits include a dedicated parking space and a long 999-year lease, providing long-term peace of mind. Ideally located just a short walk to Twickenham Station and a quick cycle from the greenery of Richmond Park, the home enjoys excellent connectivity and lifestyle convenience. With completion expected in late 2026, this is a rare opportunity to secure a premium off-plan apartment in a thriving South West London setting.

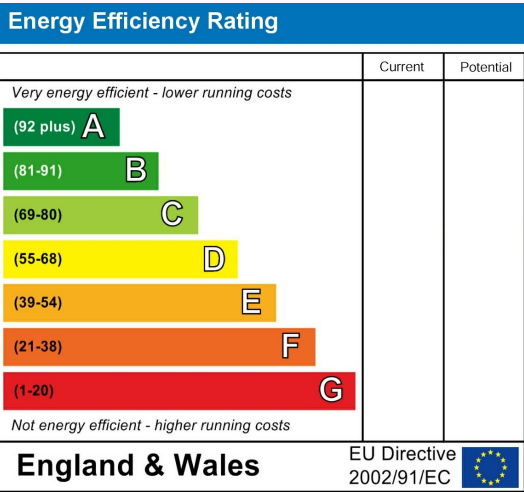
Floorplan



Area Map



Energy Efficiency Graph



These particulars, whilst believed to be accurate are set out as a general outline only for guidance and do not constitute any part of an offer or contract. Intending purchasers should not rely on them as statements of representation of fact, but must satisfy themselves by inspection or otherwise as to their accuracy. No person in this firm's employment has the authority to make or give any representation or warranty in respect of the property.

16 Church Street, Twickenham, TW1 3NJ
Tel: 020 3946 6400 Email:
twickenham@madisonbrook.com
<https://madisonbrook.com/>