



Living
made
better

Church Street
Twickenham, TW1 3NJ

 3  2  5 
Offers In The Region Of £900,000

Church Street, Twickenham TW1 3NJ

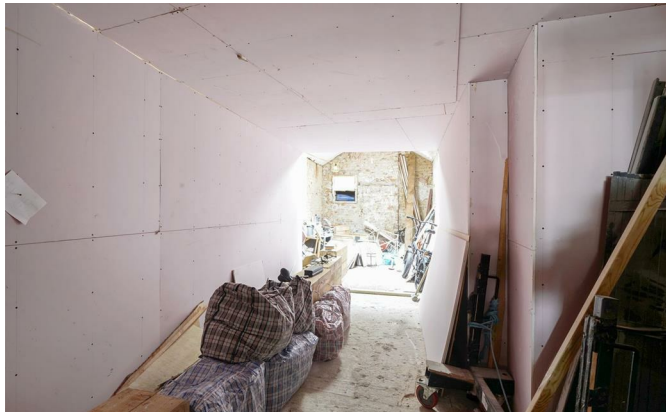
Madison Brook

A Unique Opportunity in the Heart of Twickenham.

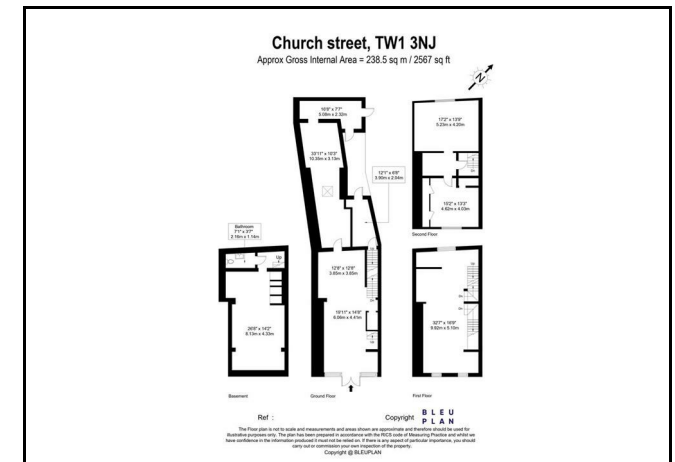
Nestled on the bustling Church Street, this versatile property offers a prime location, exceptional potential, and endless possibilities. Spanning over 2,300 sq. ft. and arranged across four beautiful, and partially refurbished floors, it's perfectly suited for both commercial and residential aspirations.

Imagine the possibilities—whether you envision a thriving business hub or wish to unlock residential potential (subject to planning permissions), this space is ready to bring your vision to life. With the added convenience of dual access points—via a rear entrance and a prominent high street frontage—flexibility and functionality blend seamlessly.

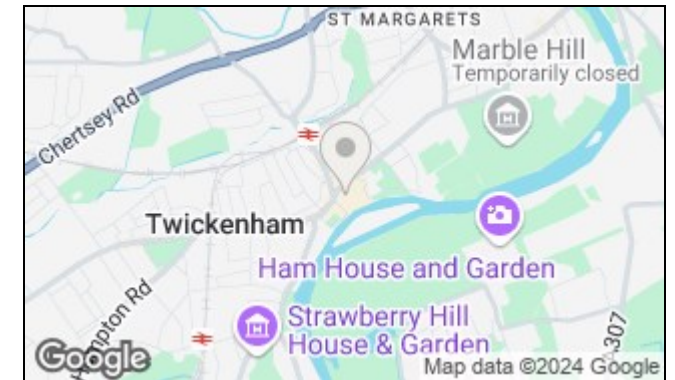
Located just moments from Twickenham train station and the scenic River Thames, this property benefits from high footfall and superb connectivity. Whether as a



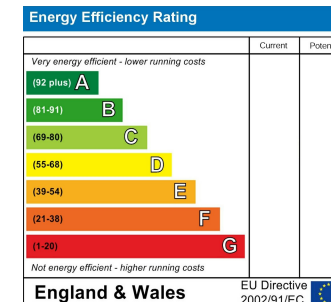
Floorplan



Area Map



Energy Efficiency Graph



These particulars, whilst believed to be accurate are set out as a general outline only for guidance and do not constitute any part of an offer or contract. Intending purchasers should not rely on them as statements of representation of fact, but must satisfy themselves by inspection or otherwise as to their accuracy. No person in this firm's employment has the authority to make or give any representation or warranty in respect of the property.

16 Church Street, Twickenham, TW1 3NJ

Tel: 020 3946 6400 Email: twickenham@madisonbrook.com <https://madisonbrook.com/>