



# HEATHROW BOULEVARD 4 CURRENT AVAILABILITY FLOOR PLANS



## SECOND FLOOR

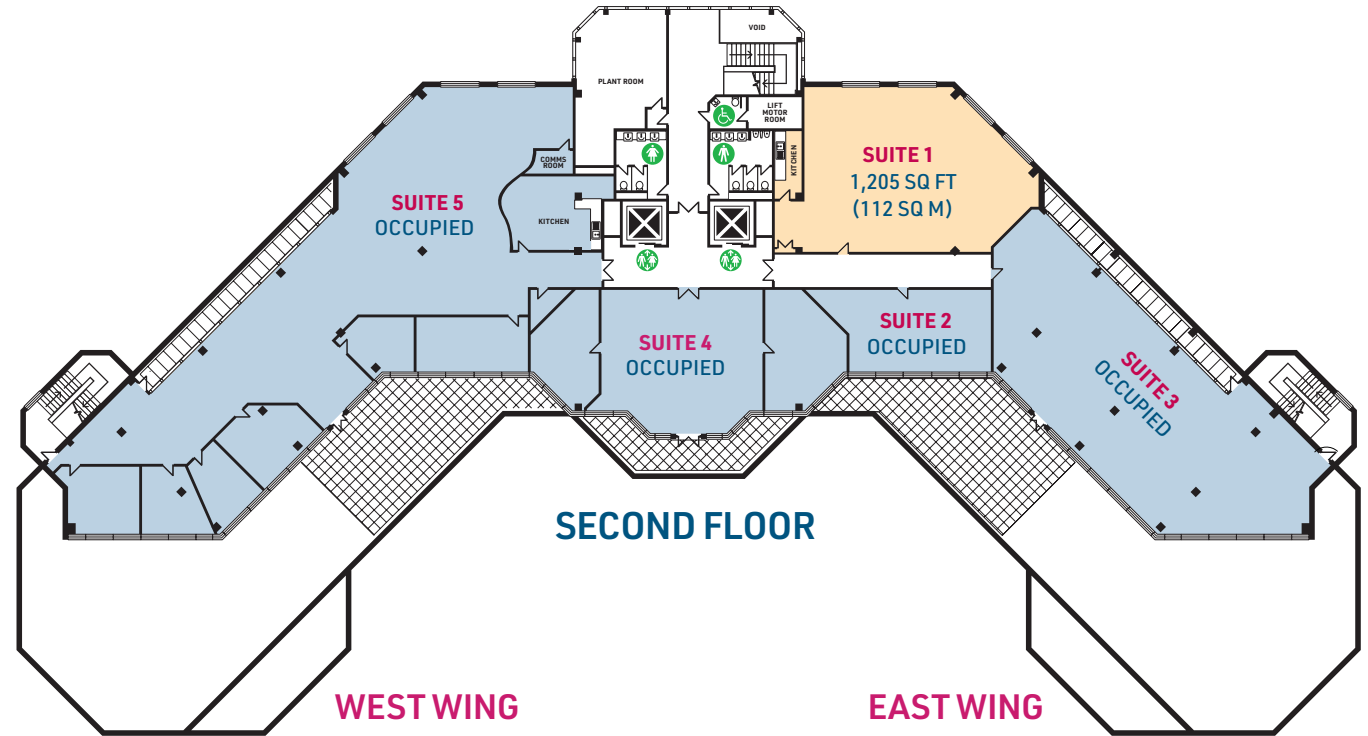
**SUITE 1:** 1,205 SQ FT (112 SQ M)

ALL AREAS ARE MEASURED IN ACCORDANCE WITH IPMS3

■ AVAILABLE ■ OCCUPIED

PARKING SPACES

**SUITE 1** - 3 SPACES



*"Firstco have based our Airport Engineering Team at Heathrow Boulevard. This places us close to one of our key clients and offers flexible office space within a well-maintained business park. This is our second office with Orbit Southern and we look forward to continuing the relationship further in the future."*

**Steve Ikin, Associate Director, Firstco Ltd**



## HEATHROW BOULEVARD 4 CURRENT AVAILABILITY FLOOR PLANS

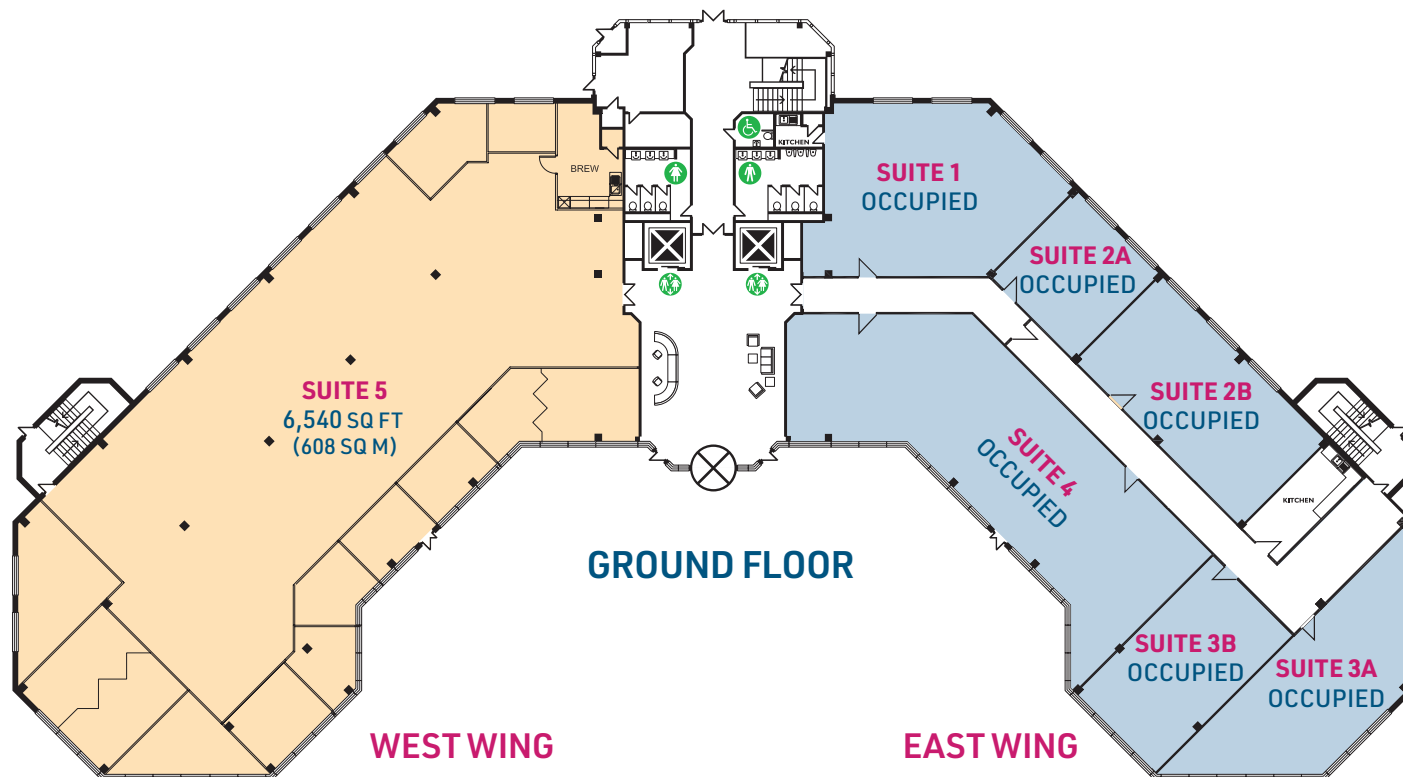
### GROUND FLOOR

**SUITE 5:** 6,540 SQ FT (608 SQ M)

■ AVAILABLE ■ OCCUPIED

**PARKING SPACES**  
**SUITE 5** - 18 SPACES

\* Available on a managed office agreement or a standard commercial lease



*"Firstco have based our Airport Engineering Team at Heathrow Boulevard. This places us close to one of our key clients and offers flexible office space within a well-maintained business park. This is our second office with Orbit Southern and we look forward to continuing the relationship further in the future."*

**Steve Ikin, Associate Director, Firstco Ltd**