



# HEATHROW BOULEVARD 2

## CURRENT AVAILABILITY FLOOR PLANS



Regular pop-up food stalls

### FIRST FLOOR

**SUITE A:** 1,420 SQ.FT. (132 SQ.M)

**SUITE B:** 624 SQ.FT. (58 SQ.M)

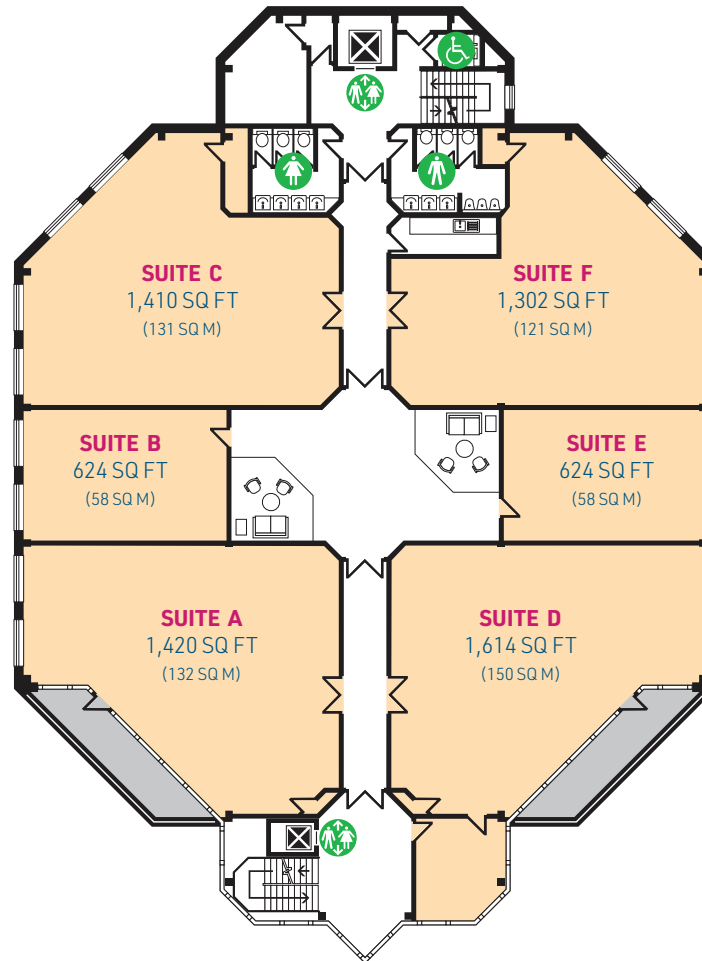
**SUITE C:** 1,410 SQ. FT. (131 SQ.M)

**SUITE D:** 1,614 SQ.FT. (150 SQ.M)

**SUITE E:** 624 SQ.FT. (58 SQ.M)

**SUITE F:** 1,302 SQ.FT. (121 SQ.M)

■ AVAILABLE ■ OCCUPIED



### PARKING SPACES

**CAR PARKING RATIO 1:300 SQ.FT**

\* Available on a managed office agreement or a standard commercial lease

*"Evodental began to look at potential sites for a second clinic to be situated in the London area in early 2015 and we had a range of options. Great transport links at Heathrow were undoubtedly attractive but we were also extremely grateful to Orbit Southern for working with us to make the move as smooth as possible. Since that time they have maintained the site to a very high standard and stayed in touch to ensure we are happy. We have a great relationship and I would not hesitate to work with them again to grow our business."*

**Steve O'Brien, Group Practice Director,  
Evodental Centre Limited**



# HEATHROW BOULEVARD 2 CURRENT AVAILABILITY FLOOR PLANS



First floor front office



First floor suite