



Flat 9, Chine Court, 3 Chine Crescent Road
£1,400 pcm



Welcome Homes are delighted to offer for rent this beautifully presented apartment is one of just twelve homes within an attractive purpose-built development constructed in 2009. Positioned on the top (4th) floor, it benefits from gas-fired underfloor heating and offers spacious, well-balanced accommodation throughout.

The thoughtfully designed layout includes a cosy lounge/diner, two generous double bedrooms, and an excellent range of fitted bedroom furniture. The main bedroom features its own en-suite shower room, while Bedroom 2 boasts a large walk-in closet and is served by a stylish family bathroom.

The well-appointed kitchen is equipped with a convenient breakfast bar, slimline dishwasher, fridge/freezer, four-ring gas hob, Neff oven and grill, and a washer-dryer. Ample storage is available throughout the apartment.

Residents enjoy secure underground parking with lift access, while visitors benefit from plentiful surface parking spaces.

Chine Court is nestled in a charming, tree-lined road, perfectly positioned to enjoy the best of the area. Bournemouth town centre is within easy walking distance, offering an extensive selection of shopping and leisure options. In the opposite direction, Westbourne provides a more relaxed atmosphere with its eclectic mix of café bars, excellent restaurants, boutique shops, and an M&S Food Hall.

For beach lovers, the golden sands of Durley Chine and the scenic promenade are just 100–150 metres away, stretching east towards Southbourne and west to the renowned Sandbanks Peninsula.

The property will be available from the 28.04.25

EPC : C

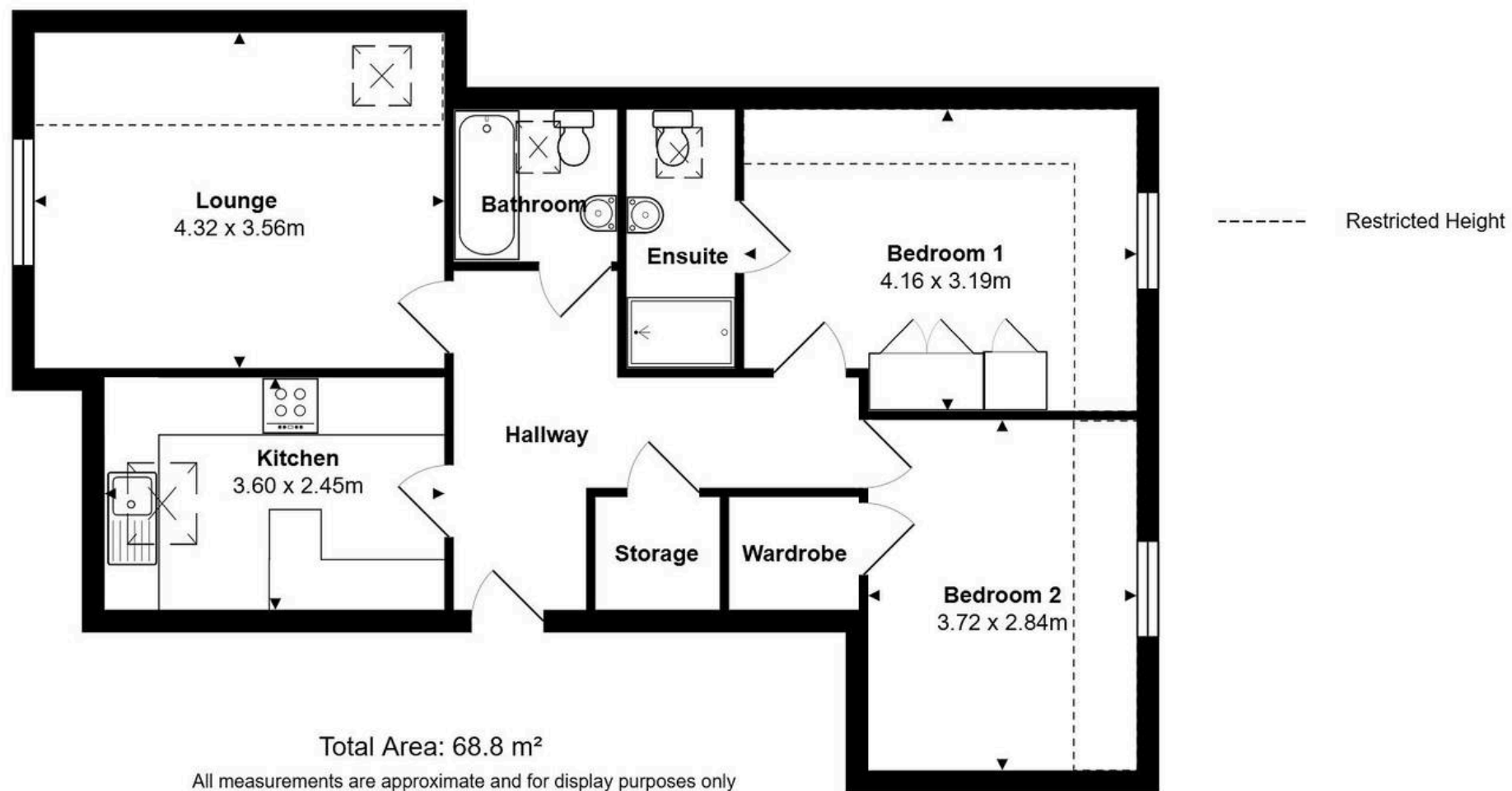
Council Tax : C

Council Tax band: G

Tenure: Leasehold









Welcome Homes

2a Castle Parade, Bournemouth – BH7 6SH

01202
055487 • hello@welcomehomesproperty.com • www.welcomehomesproperty.com

