



Elsham Road

, London, E11 3JH

Guide price £360,000

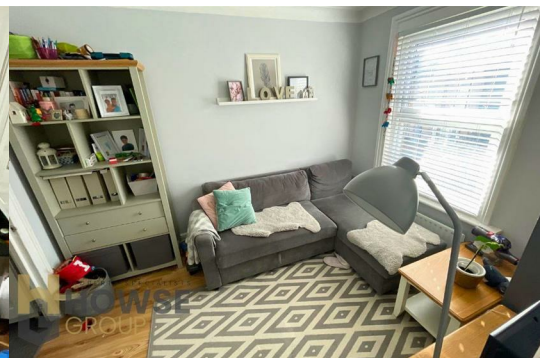
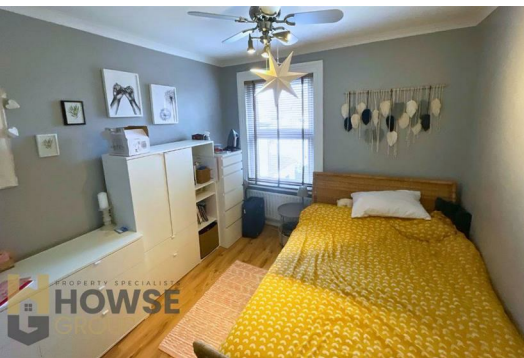


GUIDE PRICE £360,000-£380,000

CHAIN FREE!

HOWSE-GROUP are delighted to bring to market this first floor converted two bedroom Victorian terrace flat. Located on a quiet residential tree lined street with great access to local shopping and transport facilities, and only a few minutes walk to Wanstead Flats this property is ideally situated. The property boasts many features which include; double glazing and gas central heating, contemporary styled kitchen, lounge, two bedrooms and a family sized bathroom.

With potential to extend further into the loft (STPP) the property boasts huge potential.



COMMUNAL ENTRANCE

LANDING 13'44 x 4'84 (3.96m x 1.22m)

LOUNGE 11'09 x 8'35 (3.58m x 2.44m)

KITCHEN 9'43 x 7'04 (2.74m x 2.24m)

BEDROOM 1 10'81 x 9'74 (3.05m x 2.74m)

BEDROOM 2 11'10 x 6'15 (3.61m x 1.83m)

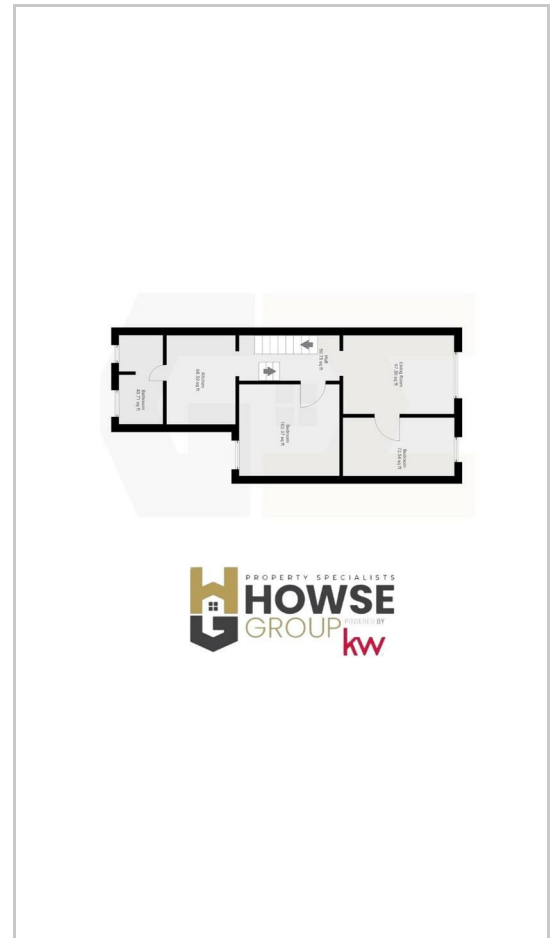
BARTHOOM 9'46 x 4'78 (2.74m x 1.22m)



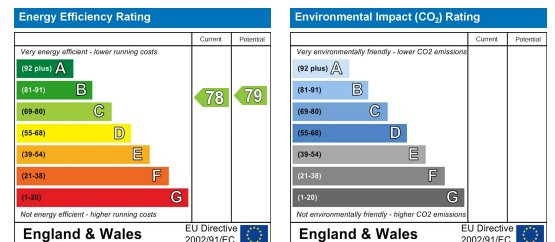
Area Map



Floor Plans



Energy Efficiency Graph



These particulars, whilst believed to be accurate are set out as a general outline only for guidance and do not constitute any part of an offer or contract. Intending purchasers should not rely on them as statements of representation of fact, but must satisfy themselves by inspection or otherwise as to their accuracy. No person in this firm's employment has the authority to make or give any representation or warranty in respect of the property.