



Winkfield Road

, London, N22 5HG

Offers in excess of £285,000

CHAIN FREE!

Howse-Group are delighted to present to market, This spacious one bedroom ground floor flat, situated within a modern gated development in Wood Green. The property benefits from being close to the local transport and shopping amenities. Boasting many features which include, a long lease, double glazing and gas central heating, a large lounge, fitted modern kitchen, a double bedroom with Juliet access to the bathroom.

Call now to arrange a viewing 0208 087 3122

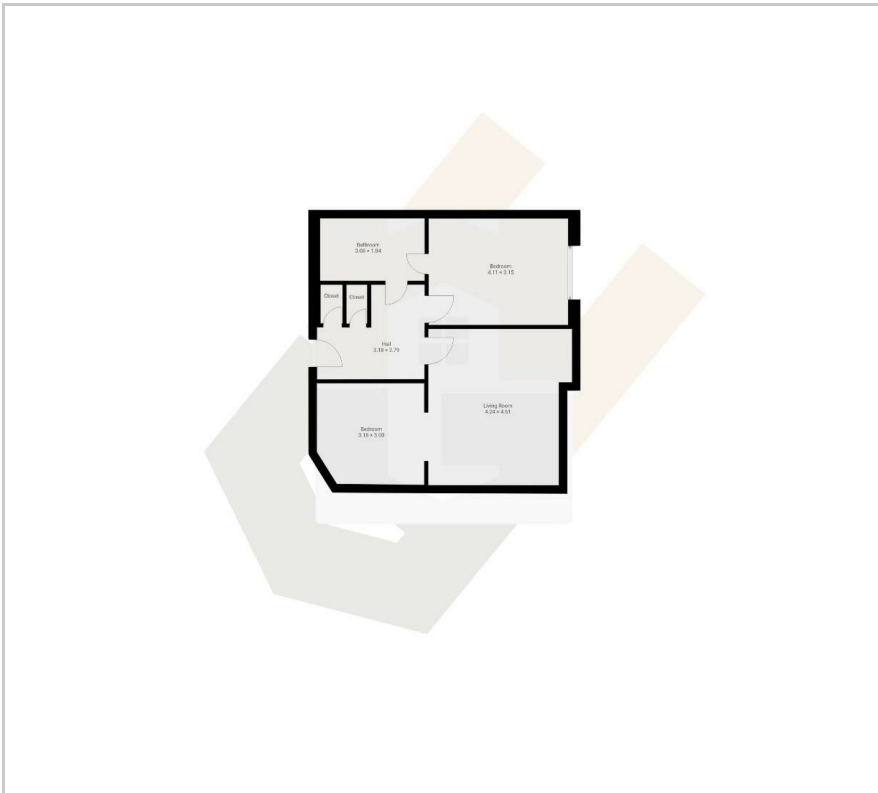
- GROUND FLOOR FLAT
- ONE BEDROOM
- LONG LEASE
- MODERN KITCHEN
- VIDEO PHONE ENTRY
- CLOSE TO TRANSPORT LINKS
- LOUNGE
- JUILET ACCESS BATHROOM
- EPC C

Viewing

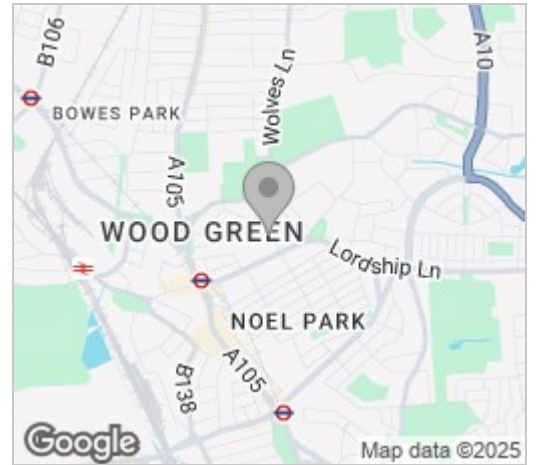
Please contact us on 0208 087 3122 if you wish to arrange a viewing appointment for this property or require further information.



Floor Plan



Area Map



Energy Efficiency Graph

Energy Efficiency Rating		Environmental Impact (CO ₂) Rating	
Current	Potential	Current	Potential
Very energy efficient - lower running costs (92 plus) A (81-91) B (69-80) C (55-68) D (39-54) E (21-38) F (1-20) G		Very environmentally friendly - lower CO ₂ emissions (92 plus) A (81-91) B (69-80) C (55-68) D (39-54) E (21-38) F (1-20) G	
Not energy efficient - higher running costs England & Wales EU Directive 2002/91/EC		Not environmentally friendly - higher CO ₂ emissions England & Wales EU Directive 2002/91/EC	



These particulars, whilst believed to be accurate are set out as a general outline only for guidance and do not constitute any part of an offer or contract. Intending purchasers should not rely on them as statements of representation of fact, but must satisfy themselves by inspection or otherwise as to their accuracy. No person in this firm's employment has the authority to make or give any representation or warranty in respect of the property.