



## Coney Burrows

, London, E4 6EB

**£1,150 Per month**



HOWSE-GROUP KW are delighted to present to market, this deceptively spacious ONE bedroom top floor purpose built flat located in sought after North Chingford, only 0.5 miles from the station (BR to Liverpool street) and the local amenities that Station road has to offer the property is ideally situated.

Call now to arrange a viewing

0208 087 3122



## ENTRANCE HALL

LOUNGE 14'9 x 10'6 (4.50m x 3.20m)

KITCHEN 9'8 x 8'5 (2.95m x 2.57m)

BEDROOM 11'4 x 10'9 (3.45m x 3.28m)

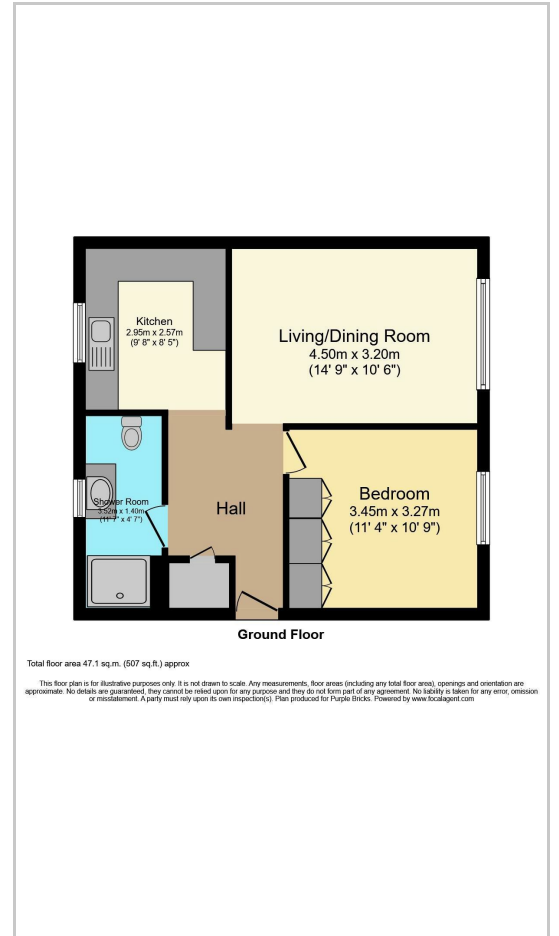
SHOWER ROOM 11'7 x 4'7 (3.53m x 1.40m)



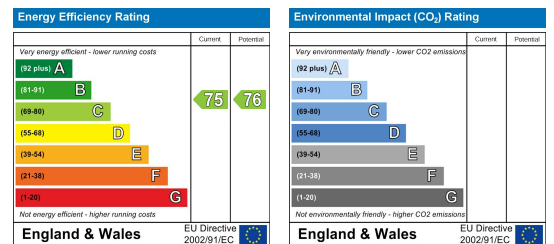
## Area Map



## Floor Plans



## Energy Efficiency Graph



These particulars, whilst believed to be accurate are set out as a general outline only for guidance and do not constitute any part of an offer or contract. Intending purchasers should not rely on them as statements of representation of fact, but must satisfy themselves by inspection or otherwise as to their accuracy. No person in this firm's employment has the authority to make or give any representation or warranty in respect of the property.

0208 087 3122

info@howse-group.com

First Floor Copper House 88 snakes lane east, Woodford Green, Essex, IG8 7HX

**PRS** Property Redress Scheme