

## **St. Johns Wood Park London NW8 6NL**

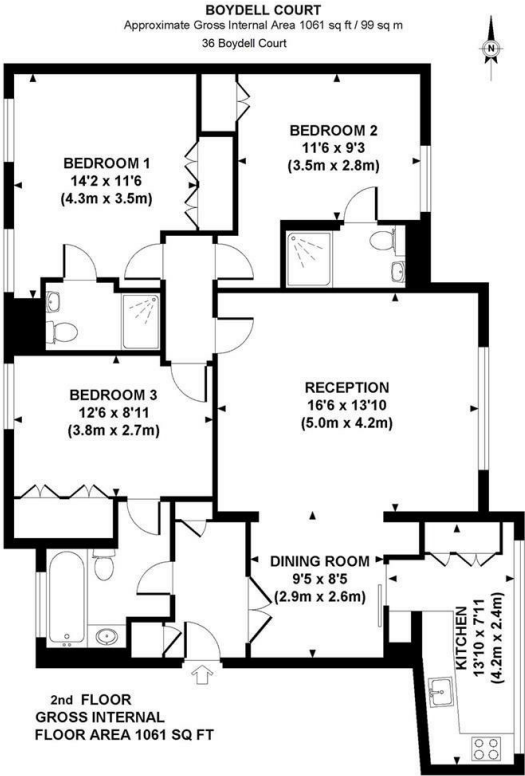
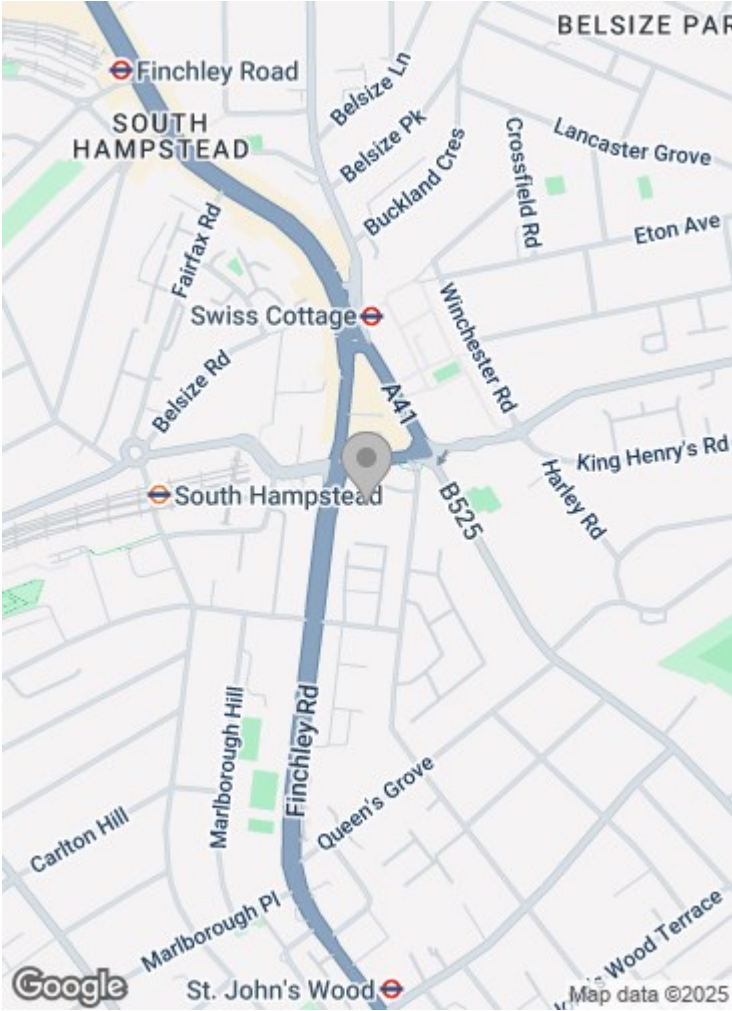
**£1,400 per week**

Set over the second floor of smart modern block within a gated residential complex, is this newly refurbished 3 bedroom flat. The flat is attractively interior designed and comprises two interconnecting reception rooms and a semi-open plan kitchen, as well as 3 en suite bathrooms.

The apartment is fully air conditioned, offering 24 hour portage within this gated development. Heating and hot water included. Pet friendly.

St Johns Wood is one of the most sought after residential areas in London. situated next to Regent's Park offering a peaceful village atmosphere but yet only minutes from London's West End.

The flat is located conveniently for the shopping and transport facilities of St. John's Wood and Swiss Cottage (Jubilee Line).



Although every attempt has been made to ensure accuracy, all measurements are approximate.  
The floor plan is for illustrative purposes only and not to scale. Measured in accordance to RICS standards.  
© PHOTOGRAHY.NET

Important notice: These particulars are issued for guidance only. They are intended to give a fair overall description of the property and do not constitute a warranty of any kind or to be an offer or contract in whole or in part. Nothing in these particular shall be deemed to constitute a representation that the property is in good structural condition nor that any services, appliances, equipment or facilities are in good working order. Notwithstanding that all information contained in these particulars, both in the text and in any plans and photographs is given in good faith, intending purchasers should make their own enquiries as to the accuracy of all matters upon which they intend to rely. Measurements are given for guidance only.

85 - 87 BAYHAM STREET  
LONDON NW1 0AG

45 CIRCUS ROAD  
LONDON NW8 9JH

T: +44 0207 1234 152  
info@phillipsharrod.com

