



Nottingham Terrace, Regent's Park NW1

**PHILLIPS
HARROD**
LONDON'S PRIME REAL ESTATE

85 - 87 BAYHAM STREET
LONDON NW1 0AG

45 CIRCUS ROAD
LONDON NW8 9JH

Available to rent, is this bright and spacious apartment set on the Southern side of Regent's Park offering comfortable, well planned living accommodation. The property is comprised of a luxurious master bedroom with en-suite bathroom and dressing room, two further bedrooms, all with en-suite bathrooms, guest wc, excellent built in storage, a built in office and large wrap around terrace. The property is offered on a fully furnished basis.

Nottingham Terrace occupies a quiet position within a private gated road, situated in a modern purpose built apartment building within the Crown Estate. The property benefits from 24 hour concierge, 24 hour security, off-street parking for visitors and two allocated underground secure parking spaces as well as the benefit of a secure basement store room.

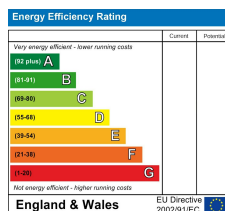
There are ample transport options available nearby along with a host of shops and supermarkets on Marylebone High Street. It is ideally located moments from Baker Street Underground Station, Regent's Park and Marylebone High Street.

ASKING PRICE: £3,461 per week

TENURE:

EPC RATING:

COUNCIL TAX BAND: G



85 - 87 BAYHAM STREET
LONDON NW1 0AG

45 CIRCUS ROAD
LONDON NW8 9JH

0207 1234 152

<https://www.phillipsharrod.com>

IMPORTANT NOTICE: These particulars are issued for guidance only. They are intended to give a fair overall description of the property and do not constitute a warranty of any kind or to be an offer or contract in whole or in part. Nothing in these particulars shall be deemed to constitute a representation that the property is in good structural condition nor that any services, appliances, equipment or facilities are in good working order, notwithstanding. That all information contained in these particulars, both in the text and in any plans and photographs is given in good faith, intending purchasers should make their own enquiries as to the accuracy of all matters upon which they intend to rely. Measurements are given for guidance only.





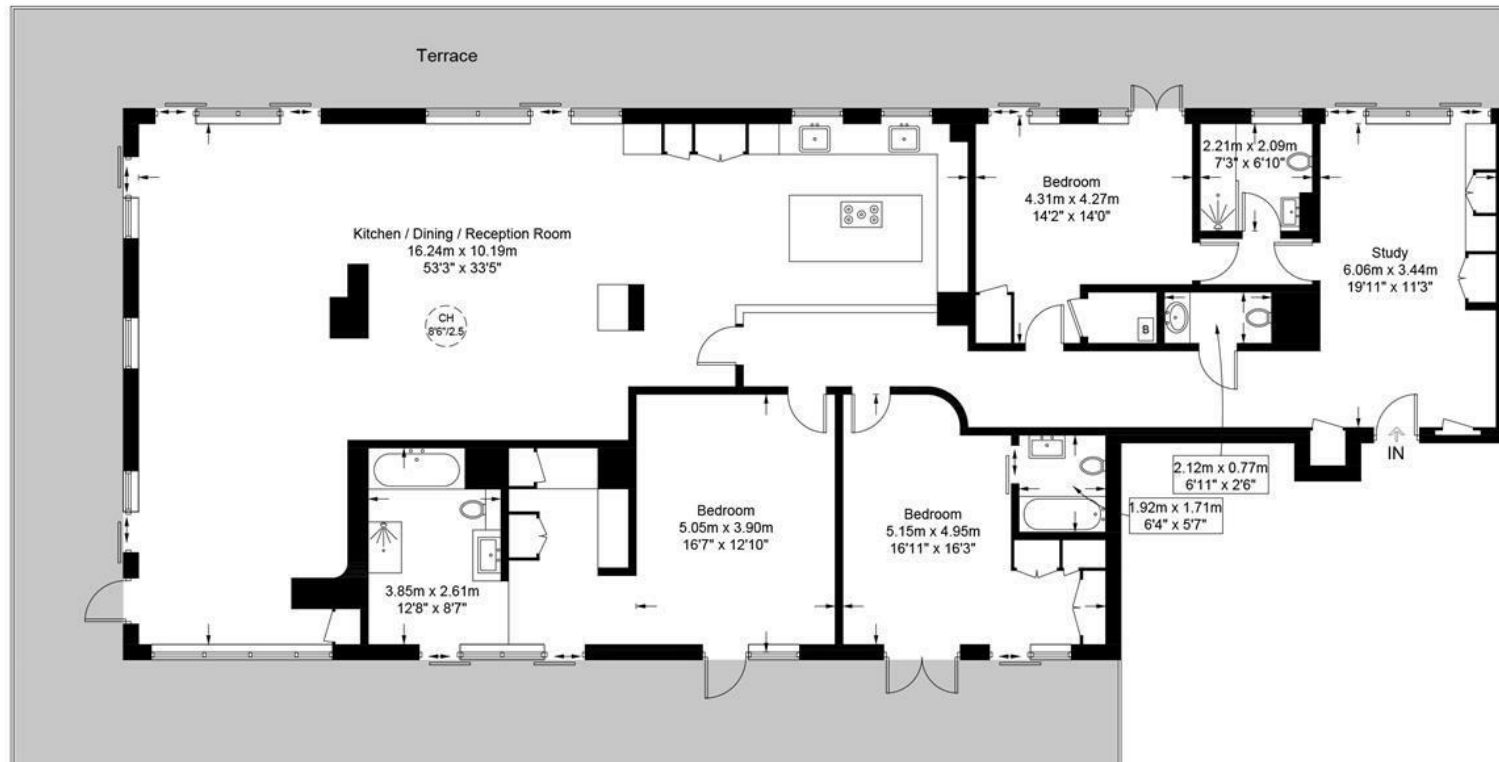
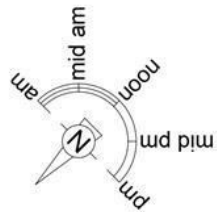






Nottingham Terrace, NW1

Approximate Gross Internal Area = 2604 sq ft / 241.9 sq m



Sixth Floor

PRIME | PERSPECTIVES

This plan is for layout guidance only and is not drawn to scale unless stated. All dimensions, including windows, doors, and the Total Gross Internal Area (GIA), are approximate. For precise measurements, please consult a qualified architect or surveyor before making any decisions based on this plan.



Certified
Property
Measurer