



**11 Loudoun Road  
St John's Wood, NW8 0LP**

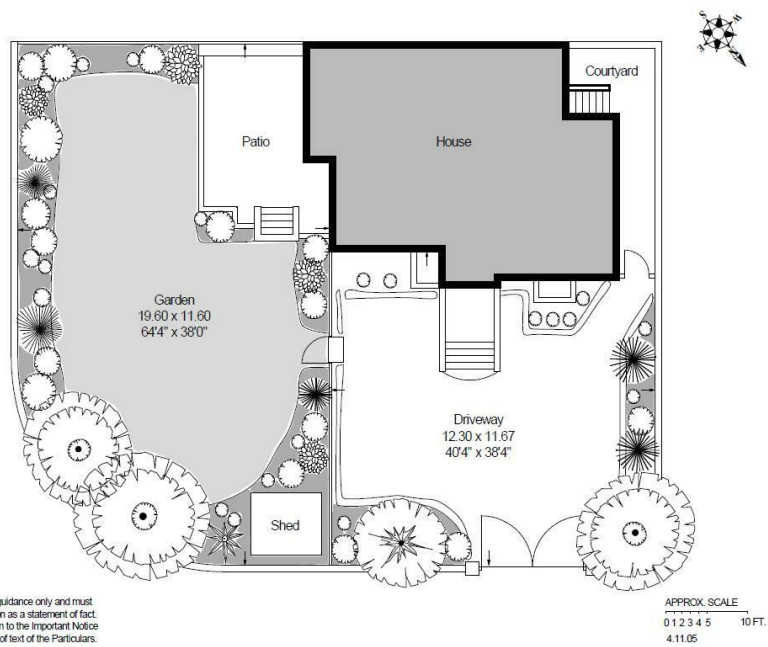
**£4,850 per week**

A prestigious double fronted period property in this ideal location in the heart of St John's Wood.

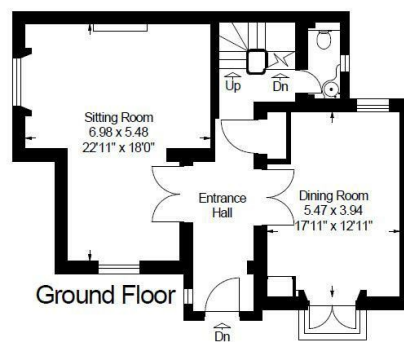
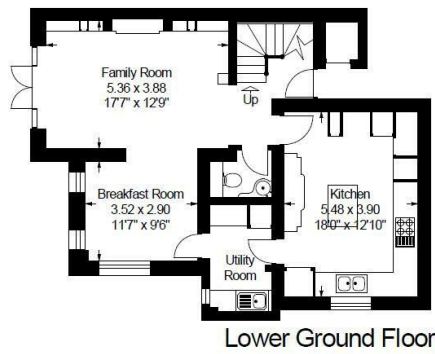
Set behind iron gates stands this impressive five bedroom (all en-suite) family house which oozes presence and character. The property is offered in excellent order and whilst its period features have been retained there is a smart mix of contemporary features offering the best of both worlds. The accommodation is set over four floors and comprises of master bedroom (en suite dressing room and bathroom) a further four bedrooms (all en suite), reception room, dining room, kitchen with attached breakfast room, family room, utility room, two WCs, patio garden leading on to a lawned garden and off secure street parking for three to four cars.

Loudoun Road is located in the heart of St John's Wood close to St John's Wood High Street and underground station (Jubilee line), the American School in London and the beautiful open spaces of Regent's Park.



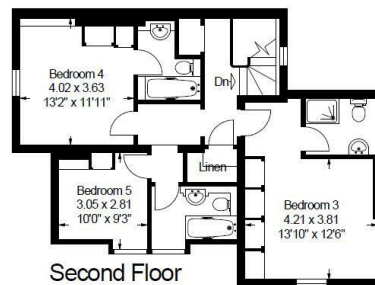
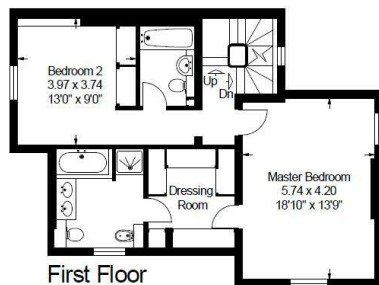


Approximate Gross Internal Floor Area:  
3197 sq.ft./ 297 sq.mts.



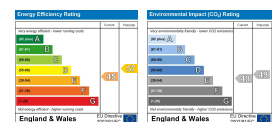
APPROX. SCALE  
0 1 2 3 4 5 10 FT.  
4.11.05

This plan is for guidance only and must not be relied upon as a statement of fact. Attention is drawn to the Important Notice on the last page of text of the Particulars.



APPROX. SCALE  
0 1 2 3 4 5 10 FT.  
4.11.05

This plan is for guidance only and must not be relied upon as a statement of fact. Attention is drawn to the Important Notice on the last page of text of the Particulars.



85 - 87 BAYHAM STREET  
LONDON NW1 0AG

45 CIRCUS ROAD  
LONDON NW8 9JH

T: +44 0207 1234 152  
info@phillipsharrod.com