

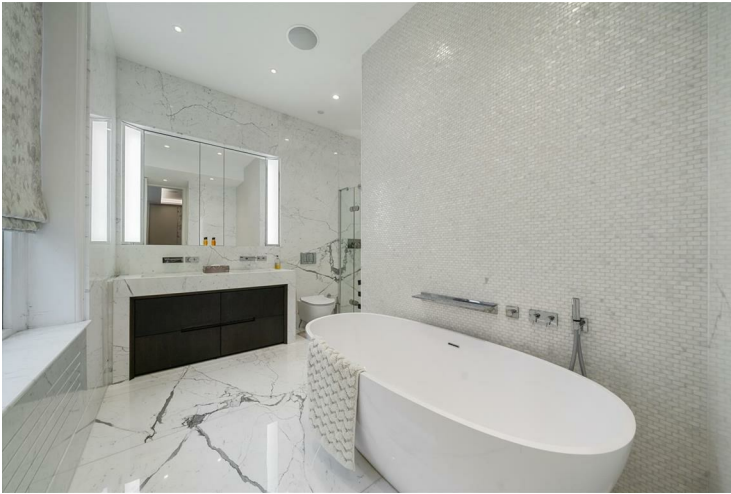
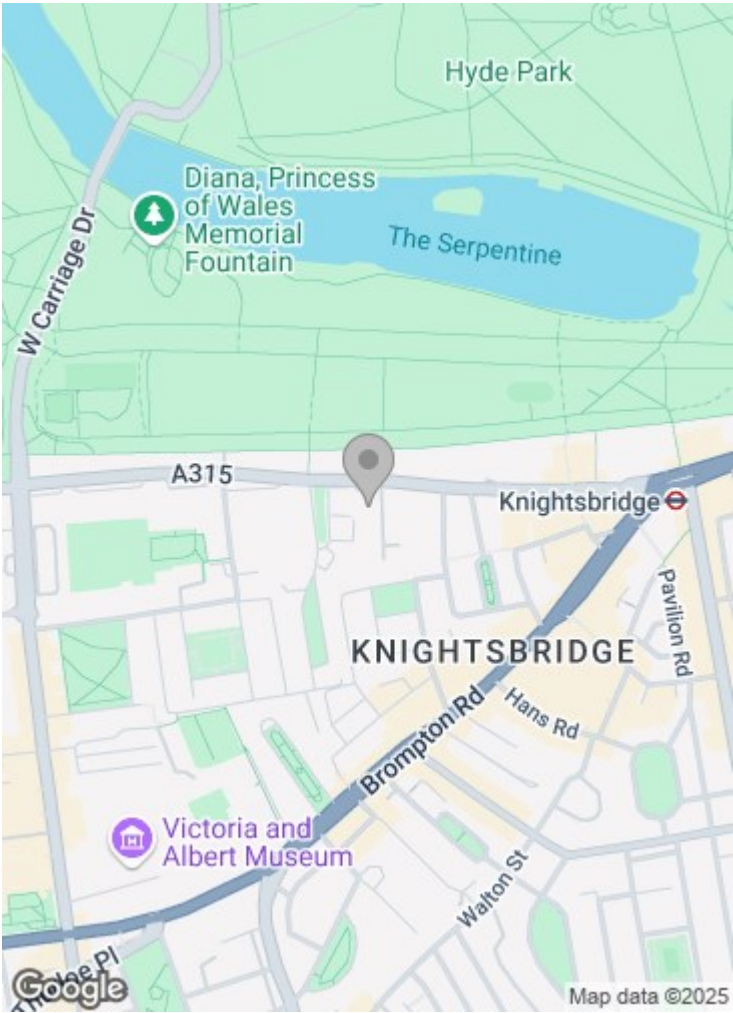


**Rutland Court  
Knightsbridge SW7 1BN**

**£4,500 per week**

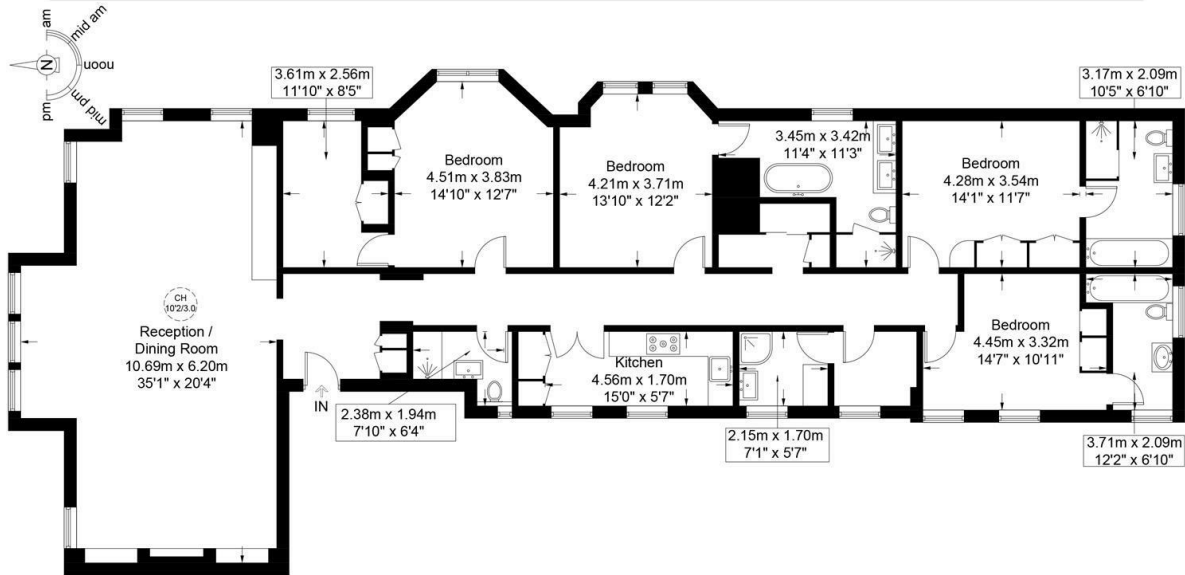
An outstanding four bedroom, five bathroom lateral second floor apartment. Rutland Court is a magnificent redbrick period mansion block situated within a private road with 24 hour security and portage. The apartment offers wonderful proportions and high ceilings throughout with particularly good reception space offering views towards Hyde Park. The property is ideally situated moments away from Hyde Park and the world class selection of shops, restaurants and amenities that the area provides, in particular Knightsbridge and Sloane Street.





**Rutland Court SW7**

**Approximate Gross Internal Area = 2235 sq ft / 207.6 sq m**



**Second Floor**

**PRIME|PERSPECTIVES**

This plan is for layout guidance only and is not drawn to scale unless stated. All dimensions, including windows, doors, and the Total Gross Internal Area (GIA), are approximate. For precise measurements, please consult a qualified architect or surveyor before making any decisions based on this plan.



Important notice: These particulars are issued for guidance only. They are intended to give a fair overall description of the property and do not constitute a warranty of any kind or to be an offer or contract in whole or in part. Nothing in these particular shall be deemed to constitute a representation that the property is in good structural condition nor that any services, appliances, equipment or facilities are in good working order. Notwithstanding that all information contained in these particulars, both in the text and in any plans and photographs is given in good faith, intending purchasers should make their own enquiries as to the accuracy of all matters upon which they intend to rely. Measurements are given for guidance only.

85 - 87 BAYHAM STREET  
LONDON NW1 0AG

45 CIRCUS ROAD  
LONDON NW8 9JH

T: +44 0207 1234 152  
info@phillipsharrod.com

