



**St. Johns Wood Park
London NW8 6NL**

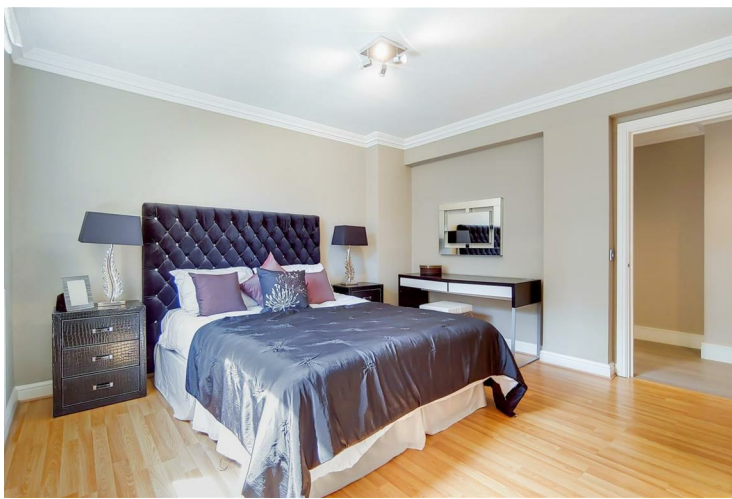
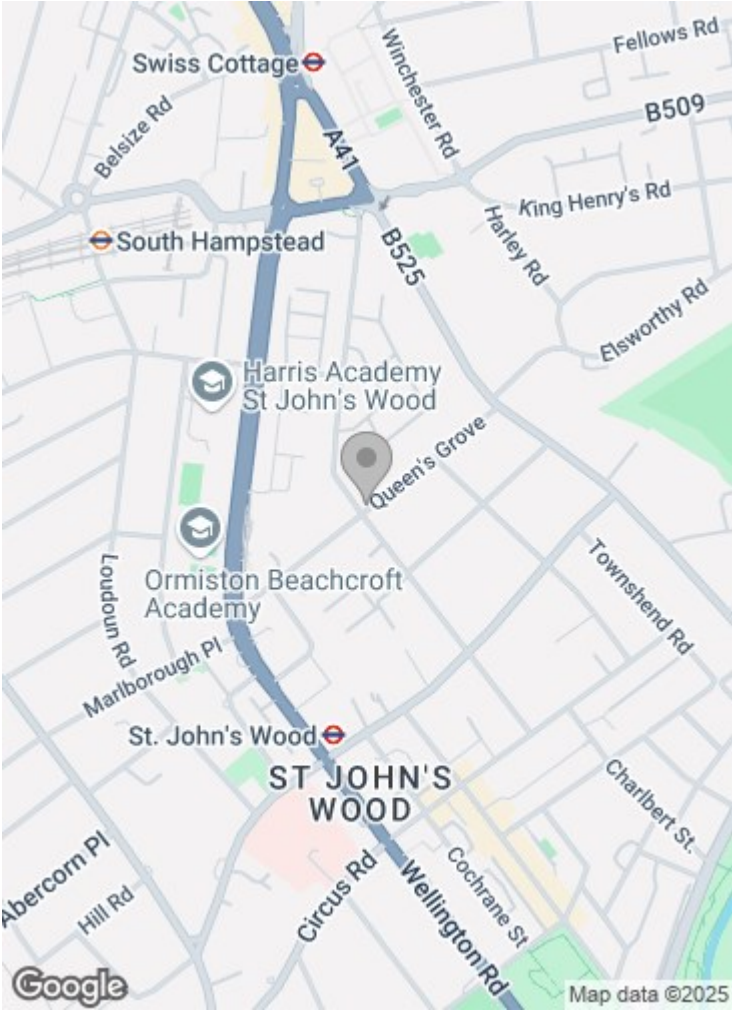
£1,300 per week

A luxury three double bedroom, three bathroom apartment, available furnished/unfurnished, situated on the first floor of this high spec purpose built block in St Johns Wood; the apartment comprises of a master bedroom with en-suite bathroom, two further double bedrooms, family bathroom, guest WC, study, kitchen and separate reception room.

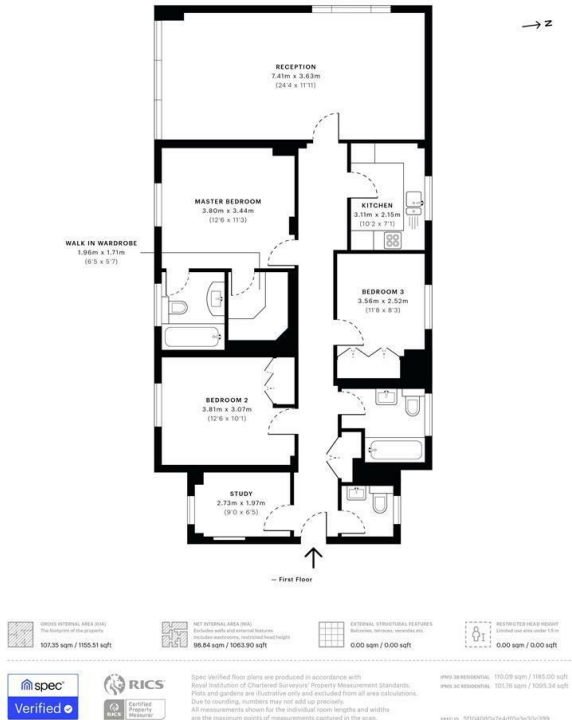
The apartment is fully air conditioned, offering 24 hour portage within this gated development.

St Johns Wood is one of the most sought after residential areas in London. situated next to Regent's Park offering a peaceful village atmosphere but yet only minutes from London's West End.

The flat is located conveniently for the shopping and transport facilities of St. John's Wood and Swiss Cottage (Jubilee Line).



SD Investments & Management
Boydell Court, NW8
CAPTURE DATE: 29/07/2020 LASER SCANPOINTS: 39,811,055
GROSS INTERNAL AREA
107.35 sqm / 1155.51 sqft



Important notice: These particulars are issued for guidance only. They are intended to give a fair overall description of the property and do not constitute a warranty of any kind or to be an offer or contract in whole or in part. Nothing in these particular shall be deemed to constitute a representation that the property is in good structural condition nor that any services, appliances, equipment or facilities are in good working order. Notwithstanding that all information contained in these particulars, both in the text and in any plans and photographs is given in good faith, intending purchasers should make their own enquiries as to the accuracy of all matters upon which they intend to rely. Measurements are given for guidance only.

85 - 87 BAYHAM STREET
LONDON NW1 0AG

45 CIRCUS ROAD
LONDON NW8 9JH

T: +44 0207 1234 152
info@phillipsharrod.com

