

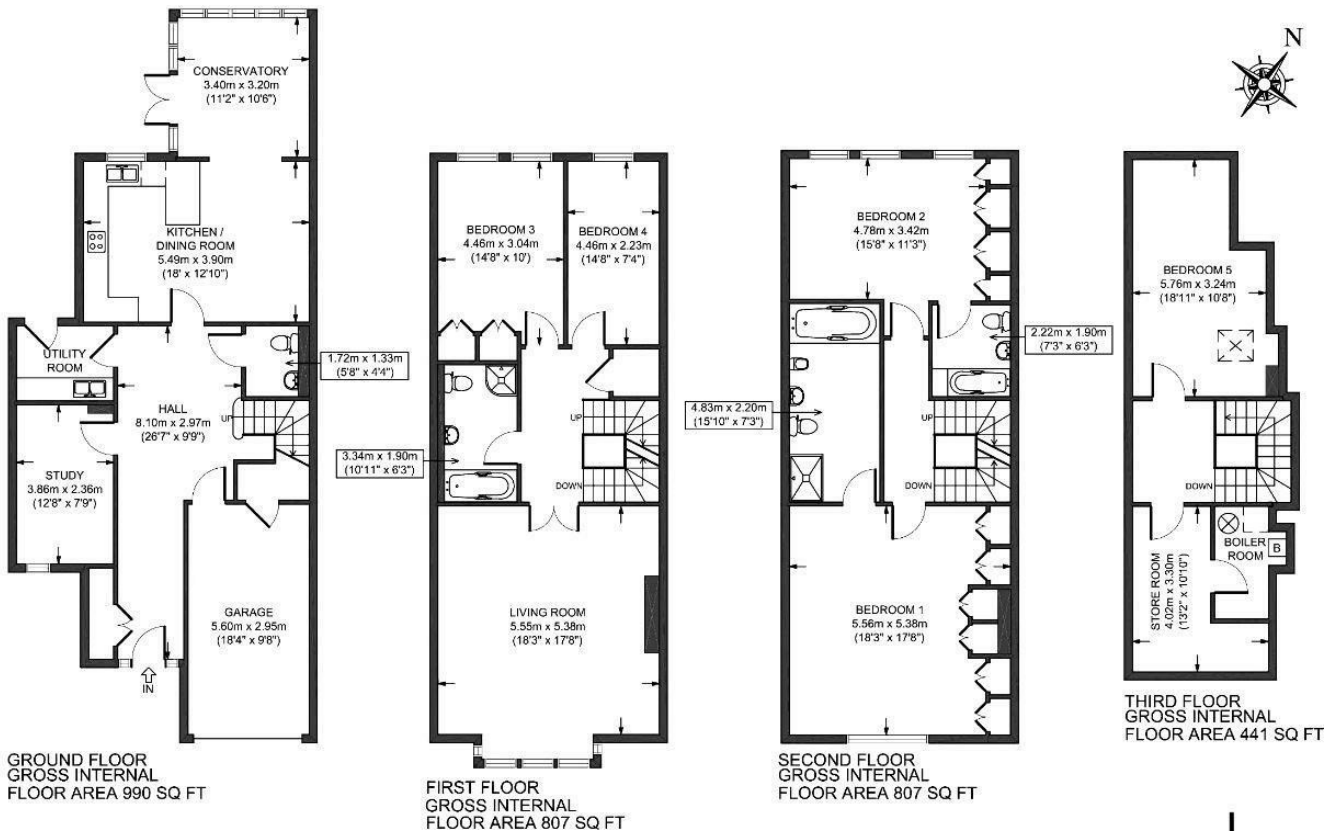
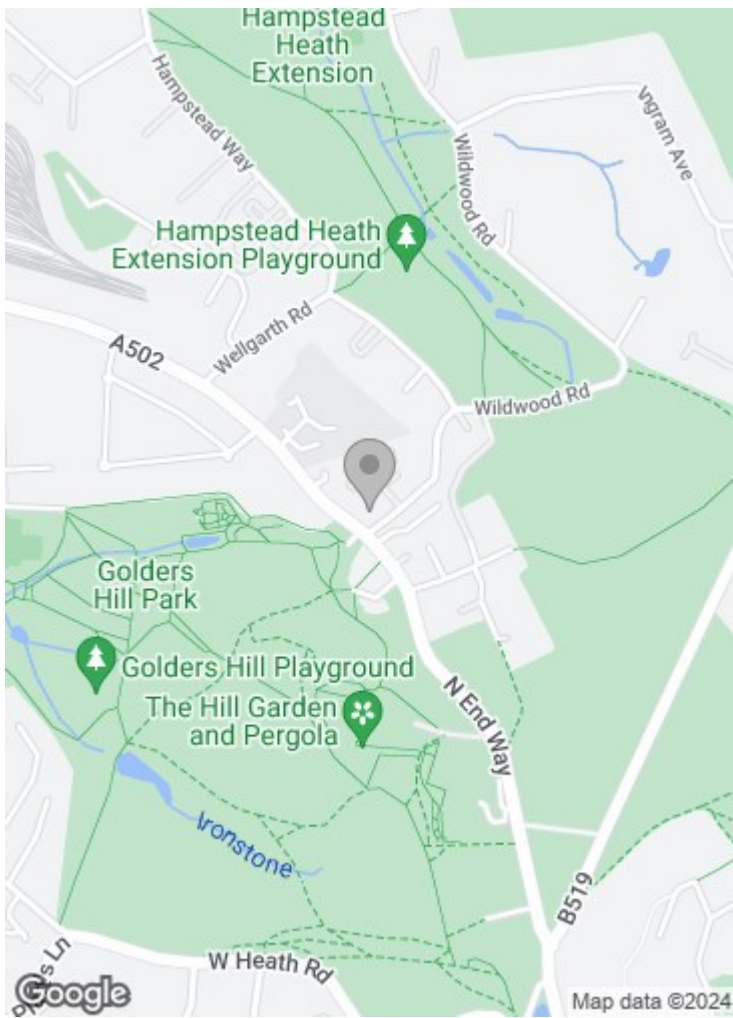


**Mountview Close
NW11 7HG**

£2,150 per week

A superb and deceptively spacious detached town house extending to well over 3,000 sq ft. in this idyllic and secure gated location. Offering a high end contemporary finish is this town house set in an award winning gated development and is arranged over four floors. The ground floor offers a large and very modern kitchen/dining area with granite worktops and a large American style fridge freezer, a conservatory looking on to the garden, a separate laundry room with washer/dryer, guest w/c, a study/TV room, a large entrance hallway with a fitted alarm and video entry phone system, and a double garage plus off street parking for two cars.

The development offers communal gardens, a communal gym, CCTV and porter and is located moments from Hampstead Heath and Golders Green Underground Station.



Important notice: These particulars are issued for guidance only. They are intended to give a fair overall description of the property and do not constitute a warranty of any kind or to be an offer or contract in whole or in part. Nothing in these particulars shall be deemed to constitute a representation that the property is in good structural condition nor that any services, appliances, equipment or facilities are in good working order. Notwithstanding that all information contained in these particulars, both in the text and in any plans and photographs is given in good faith, intending purchasers should make their own enquiries as to the accuracy of all matters upon which they intend to rely. Measurements are given for guidance only.

85 - 87 BAYHAM STREET
LONDON NW1 0AG

45 CIRCUS ROAD
LONDON NW8 9JH

T: +44 0207 1234 152
info@phillipsharrod.com

