

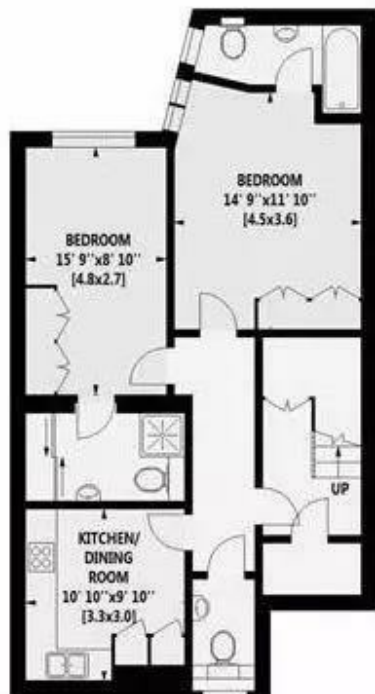
Bingham Place Marylebone W1U 5AX

£2,400 per week

A stunning ground and lower ground floor split level apartment in a beautifully maintained period mews property, providing stylish living accommodation in the heart of Marylebone Village.

This interior designed apartment is accessed through a large hallway with private entrance. The apartment offers a contemporary décor with solid wood floors throughout. There is an open plan living/dining area with a fully fitted kitchen and high spec appliances, two king-size bedrooms with fully fitted wardrobes, two large fitted modern bathrooms and a large living space which has an abundance of natural light.

Within easy reach of green open spaces – Regent's Park – and the entertainment of the West End, the apartment is ideally located for boutique shops and restaurants, with Baker Street and Bond Street underground nearby as well as Marylebone mainline station.



LOWER GROUND FLOOR

BINGHAM PLACE, W1U

Gross Internal Area: 98 Sq. metres
1054 Sq. feet



GROUND FLOOR

Important notice: These particulars are issued for guidance only. They are intended to give a fair overall description of the property and do not constitute a warranty of any kind or to be an offer or contract in whole or in part. Nothing in these particular shall be deemed to constitute a representation that the property is in good structural condition nor that any services, appliances, equipment or facilities are in good working order. Notwithstanding that all information contained in these particulars, both in the text and in any plans and photographs is given in good faith, intending purchasers should make their own enquiries as to the accuracy of all matters upon which they intend to rely. Measurements are given for guidance only.

85 - 87 BAYHAM STREET
LONDON NW1 0AG

45 CIRCUS ROAD
LONDON NW8 9JH

T: +44 0207 1234 152
info@phillipsharrod.com

Energy Efficiency Rating		Environmental Impact (CO ₂) Rating	
Band	Score	Band	Score
A	92	A	47
B	81	B	42
C	69	C	35
D	55	D	27
E	39	E	22
F	29	F	18
G	13	G	12