



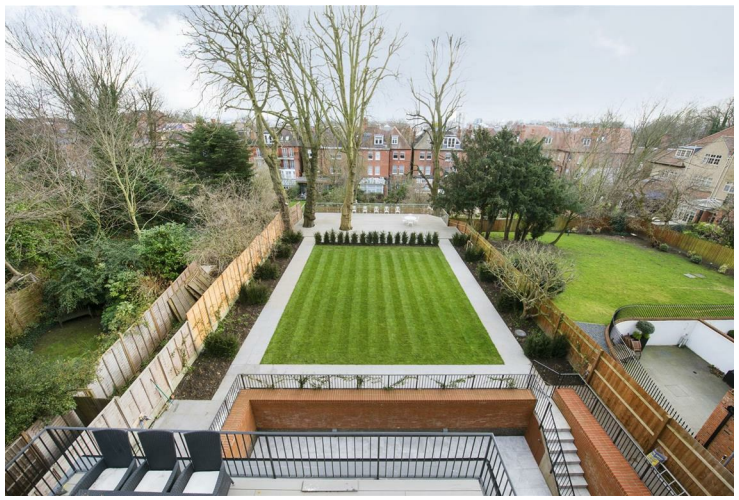
Lyndhurst Road
St John's Wood NW3 5PB

£1,575 per week

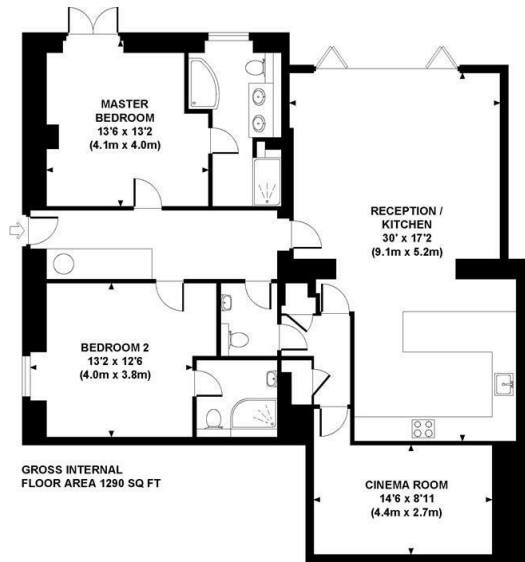
An ultra modern newly refurbished two/three bedroom apartment with its own private patio in this luxury redevelopment of a converted period property close to Hampstead High Street . This spacious flat has been refurbished and interior designed to a luxury standard and includes air conditioning/heating in every room. The property has two en-suite bathrooms, extra cinema/study room, guest wc and separate storage unit.

Residential permit parking available by application with local council.

Lyndhurst Road is ideally located close to both Belsize Park and Hampstead (Northern line tube station) villages with the Finchley Road (Jubilee and Metropolitan lines) also within walking distance.



FLAT B LYNDHURST ROAD, NW3
Approximate Gross Internal Area 1290 sq ft / 119.8 sq m



Although every attempt has been made to ensure accuracy, all measurements are approximate. The floor plans for illustrative purposes only and not to scale. Measured in accordance to RICS standards. DE-PHOTOGRAPHY.NET

Important notice: These particulars are issued for guidance only. They are intended to give a fair overall description of the property and do not constitute a warranty of any kind or to be an offer or contract in whole or in part. Nothing in these particular shall be deemed to constitute a representation that the property is in good structural condition nor that any services, appliances, equipment or facilities are in good working order. Notwithstanding that all information contained in these particulars, both in the text and in any plans and photographs is given in good faith, intending purchasers should make their own enquiries as to the accuracy of all matters upon which they intend to rely. Measurements are given for guidance only.

85 - 87 BAYHAM STREET
LONDON NW1 0AG

45 CIRCUS ROAD
LONDON NW8 9JH

T: +44 0207 1234 152
info@phillipsharrod.com

Energy Efficiency Rating		Environmental Impact (CO ₂) Rating	
Band	Score	Band	Score
A	92-100	A	1-2
B	81-91	B	3-4
C	69-80	C	5-6
D	55-68	D	7-8
E	39-54	E	9-10
F	21-38	F	11-12
G	1-20	G	13-14