



## St. Johns Wood Park St John's Wood NW8 6NL

**£1,300 per week**

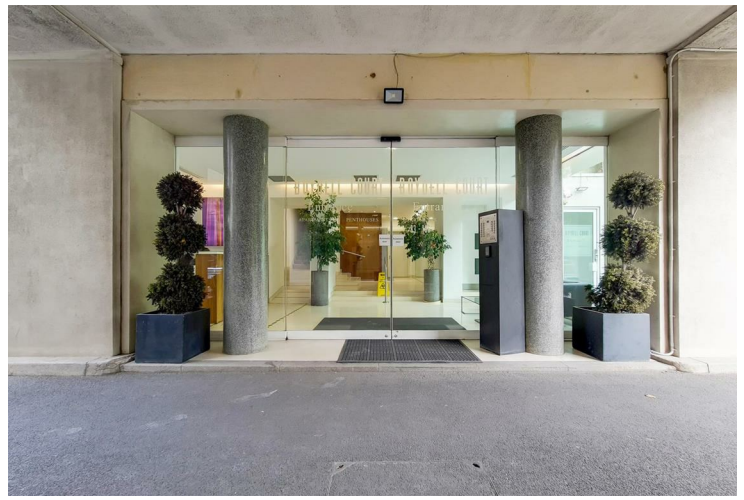
A luxury three double bedroom apartment, available furnished/unfurnished, situated on the second floor of this high spec purpose built block in St Johns Wood; the apartment comprises of a master bedroom with en-suite bathroom, two further double bedrooms with en-suite bathrooms, kitchen and reception room.

The apartment is fully air conditioned, offering 24 hour porterage within this gated development.

Heating and hot water included in the rent.

St Johns Wood is one of the most sought after residential areas in London. situated next to Regent's Park offering a peaceful village atmosphere but yet only minutes from London's West End.

The flat is located conveniently for the shopping and transport facilities of St. John's Wood and Swiss Cottage (Jubilee Line).



SD Investments & Management

Boydell Court, NW8

CAPTURE DATE: 03/07/2022 LAZAR SCAN POINTS: 94,293,027

GROSS INTERNAL AREA

108.26 sqm / 1165.30 sqft



spec Verified RICS Certified Property

56330/RS/SP/NS/0000000770

Important notice: These particulars are issued for guidance only. They are intended to give a fair overall description of the property and do not constitute a warranty of any kind or to be an offer or contract in whole or in part. Nothing in these particular shall be deemed to constitute a representation that the property is in good structural condition nor that any services, appliances, equipment or facilities are in good working order. Notwithstanding that all information contained in these particulars, both in the text and in any plans and photographs is given in good faith, intending purchasers should make their own enquiries as to the accuracy of all matters upon which they intend to rely. Measurements are given for guidance only.

85 - 87 BAYHAM STREET  
LONDON NW1 0AG

45 CIRCUS ROAD  
LONDON NW8 9JH

T: +44 0207 1234 152  
info@phillipsharrod.com

