

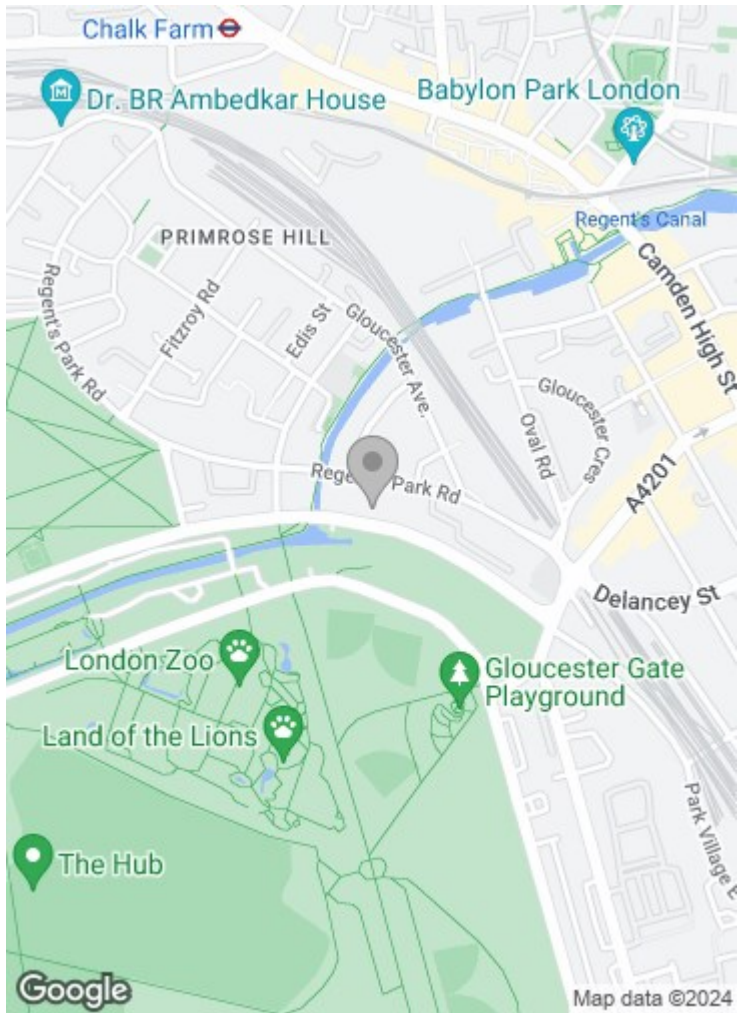


Prince Albert Road
St John's Wood NW1 7SR

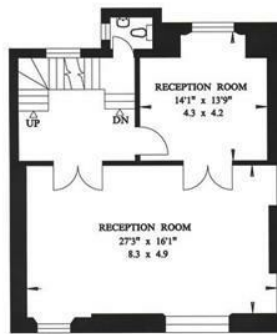
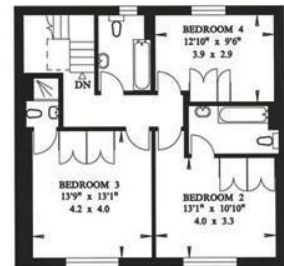
£6,500 per week

Situated directly opposite Regent's Park and set behind a gated driveway and electric gates, this beautifully presented six bedroom (4031 sq ft / 374 sq m) white stucco Nash period house, provides wonderful views over the park. The accommodation comprises six bedrooms, five bathrooms exceptional entertaining space throughout with a magnificent central staircase and benefits from a beautifully presented private garden and off street parking for three cars.

Prince Albert Road is located opposite Regents Park and only moments from Primrose Hill and St John's Wood High Street with its many amenities and Underground Station (Jubilee Line).



12 PRINCE ALBERT ROAD
LONDON NW1
Gross Floor Area = 374 sq. metres
4031 sq. feet



Plans produced by
PLANAIID: 020 8673 1961

Important notice: These particulars are issued for guidance only. They are intended to give a fair overall description of the property and do not constitute a warranty of any kind or to be an offer or contract in whole or in part. Nothing in these particular shall be deemed to constitute a representation that the property is in good structural condition nor that any services, appliances, equipment or facilities are in good working order. Notwithstanding that all information contained in these particulars, both in the text and in any plans and photographs is given in good faith, intending purchasers should make their own enquiries as to the accuracy of all matters upon which they intend to rely. Measurements are given for guidance only.

85 - 87 BAYHAM STREET
LONDON NW1 0AG

45 CIRCUS ROAD
LONDON NW8 9JH

T: +44 0207 1234 152
info@phillipsharrod.com

