

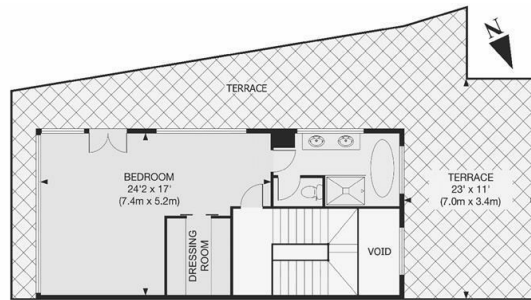
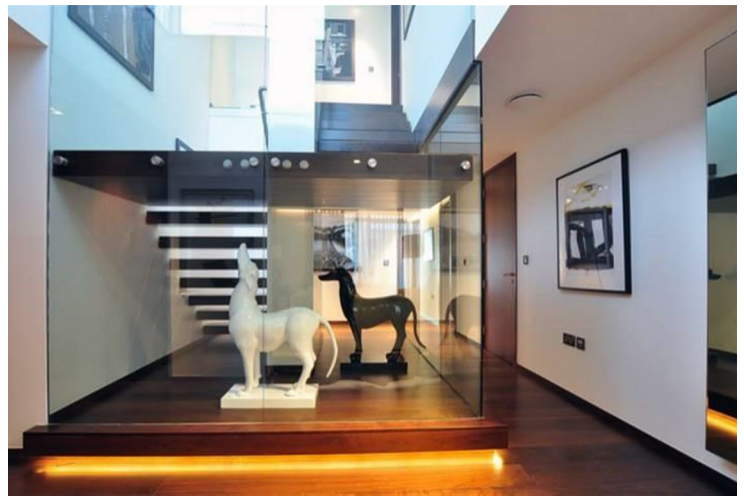
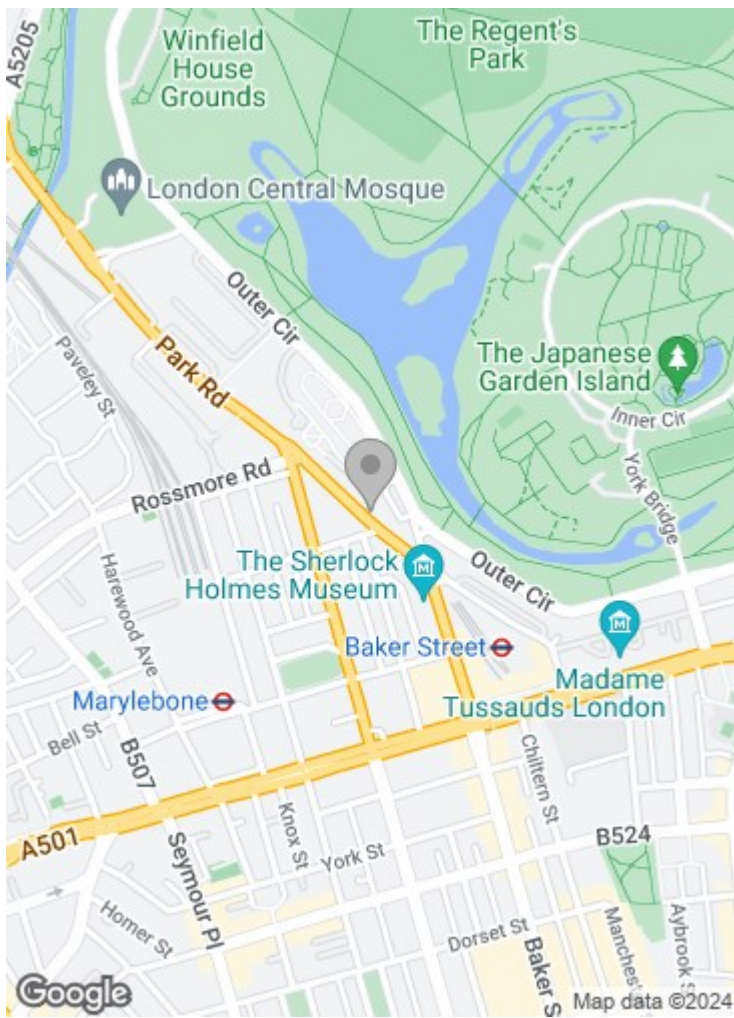


**Park Road
London NW8 7EA**

£3,250 per week

Situated in this high end modern building is this luxurious four bedroom duplex penthouse apartment . Arranged over the 6th and 7th floors of a newly built building, the property benefits from direct lift access, decked patio and roof garden and comprises master bedroom with en suite bathroom, three further bedrooms, further en suite bathroom, en suite shower room, open plan reception room/dining room and kitchen and a guest cloakroom. Further benefits include comfort cooling, under floor heating and 24 hour portorage. Underground parking is available by separate negotiation.

The Atrium is ideally located overlooking Regent's Park, close to both St John's Wood and Baker Street underground stations (Jubilee, Circle, Hammersmith & City, Metropolitan and Bakerloo lines).



Important notice: These particulars are issued for guidance only. They are intended to give a fair overall description of the property and do not constitute a warranty of any kind or to be an offer or contract in whole or in part. Nothing in these particulars shall be deemed to constitute a representation that the property is in good structural condition nor that any services, appliances, equipment or facilities are in good working order. Notwithstanding that all information contained in these particulars, both in the text and in any plans and photographs is given in good faith, intending purchasers should make their own enquiries as to the accuracy of all matters upon which they intend to rely. Measurements are given for guidance only.

85 - 87 BAYHAM STREET
LONDON NW1 0AG

45 CIRCUS ROAD
LONDON NW8 9JH

T: +44 0207 1234 152
info@phillipsharrod.com

Energy Efficiency Rating		Environmental Impact (CO ₂) Rating	
Energy Efficiency Rating: A	Environmental Impact (CO ₂) Rating: A	Energy Efficiency Rating: A	Environmental Impact (CO ₂) Rating: A
Energy Efficiency Rating: B	Environmental Impact (CO ₂) Rating: B	Energy Efficiency Rating: B	Environmental Impact (CO ₂) Rating: B
Energy Efficiency Rating: C	Environmental Impact (CO ₂) Rating: C	Energy Efficiency Rating: C	Environmental Impact (CO ₂) Rating: C
Energy Efficiency Rating: D	Environmental Impact (CO ₂) Rating: D	Energy Efficiency Rating: D	Environmental Impact (CO ₂) Rating: D
Energy Efficiency Rating: E	Environmental Impact (CO ₂) Rating: E	Energy Efficiency Rating: E	Environmental Impact (CO ₂) Rating: E
Energy Efficiency Rating: F	Environmental Impact (CO ₂) Rating: F	Energy Efficiency Rating: F	Environmental Impact (CO ₂) Rating: F
Energy Efficiency Rating: G	Environmental Impact (CO ₂) Rating: G	Energy Efficiency Rating: G	Environmental Impact (CO ₂) Rating: G