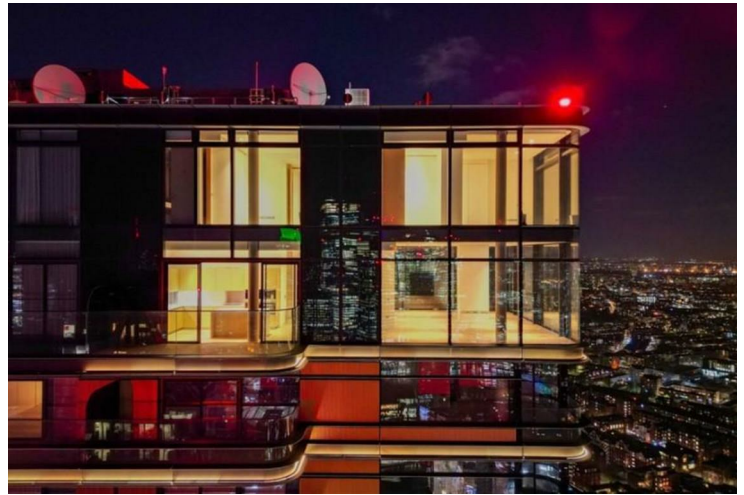
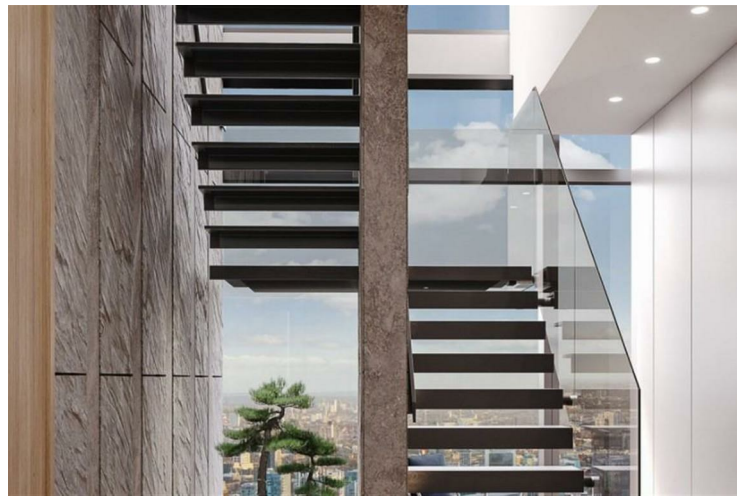


**Principal Tower Worship Street
Shoreditch EC2A 2BA**

Asking price £9,900,000

A stunning duplex penthouse on the 48th and 49th floor of this modern building. The penthouse comprises approximately 2885 sqft offering an open plan living/kitchen, 3 bedrooms with en-suite bathrooms and dressing rooms, a powder room, and two terraces. Principal Tower overlooks the heart of the City of London and has easy access to five major transport hubs within walking distance of the development. The development is located just a short distance from several transport links including Liverpool Street station, providing access to both Underground and Rail Services for commutes to key destinations. It benefits from the residents' gym, spa, cinema, pool and 24-hour concierge. With a city address, the development offers fast transport links and a wealth of cultural and culinary experiences.



FINSBURY DUPLEX PENTHOUSE

ADDRESS: 45 CIRCUS ROAD, SPITALFIELDS, LONDON NW8 9JH
 PROJECT: PHILLIP SHARROD ARCHITECTS



Scale 1:500

FINSBURY DUPLEX PENTHOUSE

ADDRESS: 45 CIRCUS ROAD, SPITALFIELDS, LONDON NW8 9JH
 PROJECT: PHILLIP SHARROD ARCHITECTS



Scale 1:500

85 - 87 BAYHAM STREET
 LONDON NW1 0AG

45 CIRCUS ROAD
 LONDON NW8 9JH

T: +44 0207 1234 152
 info@phillipsharrod.com

Energy Efficiency Rating		Environmental Impact (CO ₂) Rating	
Band	Score	Band	Score
A	92-100	A	1-2
B	81-91	B	3-4
C	69-80	C	5-6
D	55-68	D	7-8
E	39-54	E	9-10
F	21-38	F	11-12
G	1-20	G	13-14