

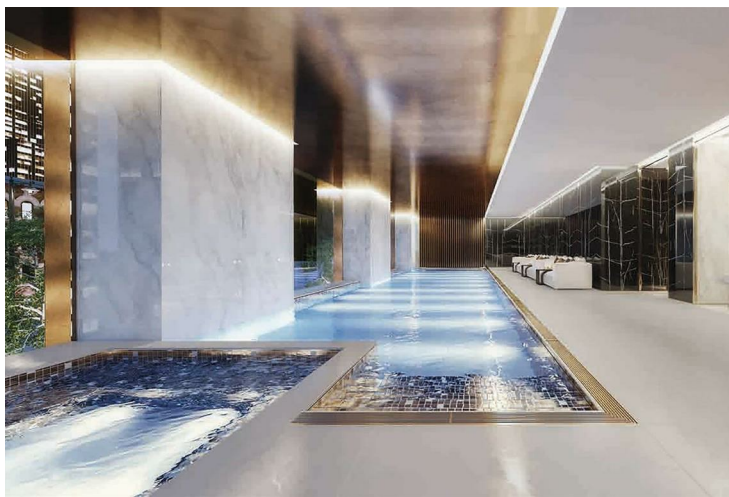


**Worship Street
Shoreditch EC2A 2BA**

Asking price £2,760,000

Set within an exclusive 50 storey development designed by the renowned Foster and Partners, this premium PENTHOUSE apartment with ample natural lighting, a south westerly aspect and fabulous views boasts carefully designed living space and a good sized terrace. Comprising a contemporary reception/kitchen with ample space to dine, sleek kitchen spaces with Miele and Siemens appliances, a grand master bedroom with ensuite bathroom, a second bedroom with en suite bathroom, third bedroom and shower room all with bespoke fitted wardrobes, all with under floor heating, store room, 24 hour concierge service, resident's lounge, access to resident's gymnasium as well as a lap pool and spa.

Principal Tower is next to the 15-storey office block Principal Place, also designed by Foster and Partners. Nearest stations are Shoreditch (London Overground), Liverpool Street (Metropolitan, Hammersmith and City, Circle, TFL, Greater Anglia, C2C, Central lines) and Moorgate (Metropolitan, Northern, Circle, Hammersmith and City and Great Northern lines).



Important notice: These particulars are issued for guidance only. They are intended to give a fair overall description of the property and do not constitute a warranty of any kind or to be an offer or contract in whole or in part. Nothing in these particular shall be deemed to constitute a representation that the property is in good structural condition nor that any services, appliances, equipment or facilities are in good working order. Notwithstanding that all information contained in these particulars, both in the text and in any plans and photographs is given in good faith, intending purchasers should make their own enquiries as to the accuracy of all matters upon which they intend to rely. Measurements are given for guidance only.

85 - 87 BAYHAM STREET
LONDON NW1 0AG

45 CIRCUS ROAD
LONDON NW8 9JH

T: +44 0207 1234 152
info@phillipsharrod.com

Energy Efficiency Rating		Environmental Impact (CO ₂) Rating	
Band	Score	Band	Score
A	92-100	A	1-23
B	81-91	B	24-47
C	69-80	C	48-71
D	55-68	D	72-95
E	39-54	E	96-120
F	21-38	F	121-150
G	1-20	G	151-200