

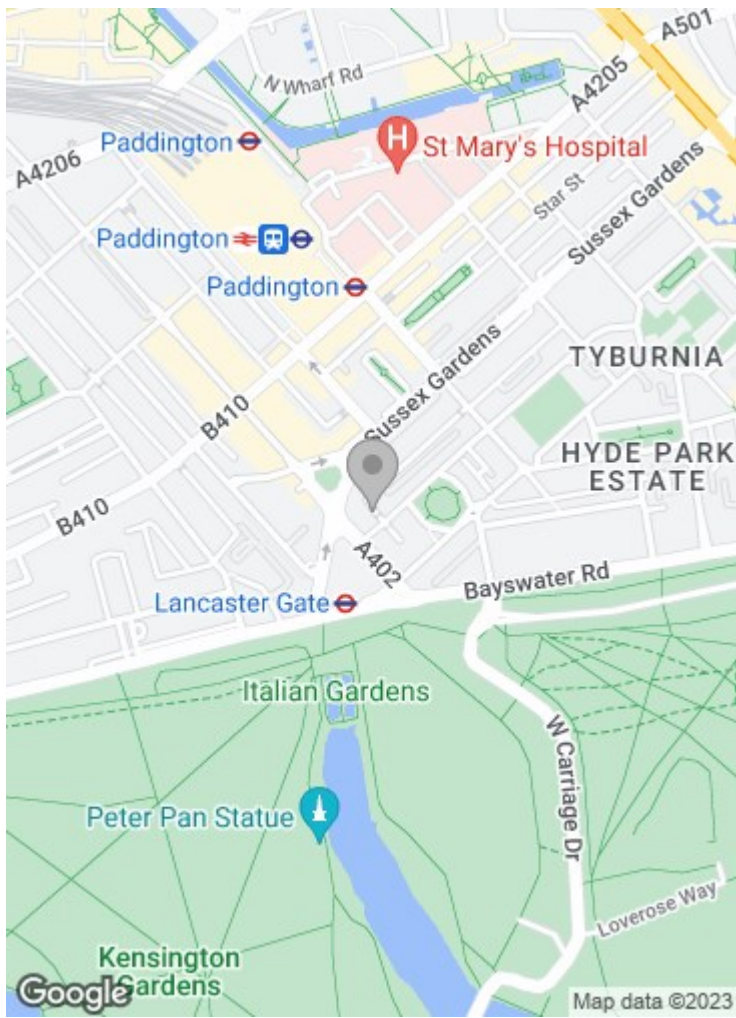


**Bathurst Mews
London W2 2SB**

Asking price £1,700,000

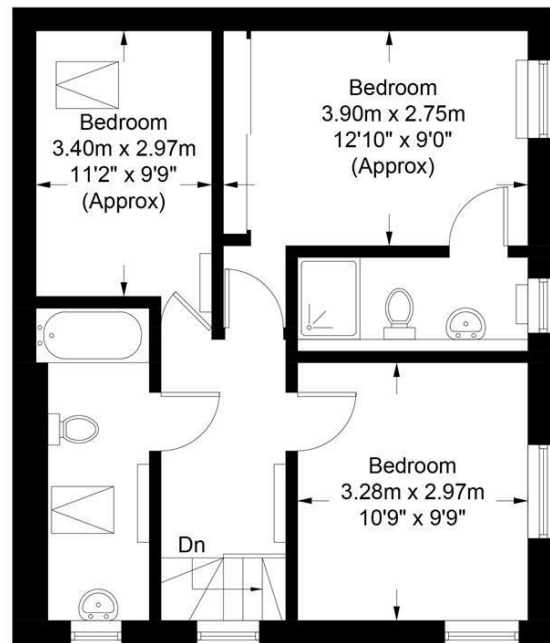
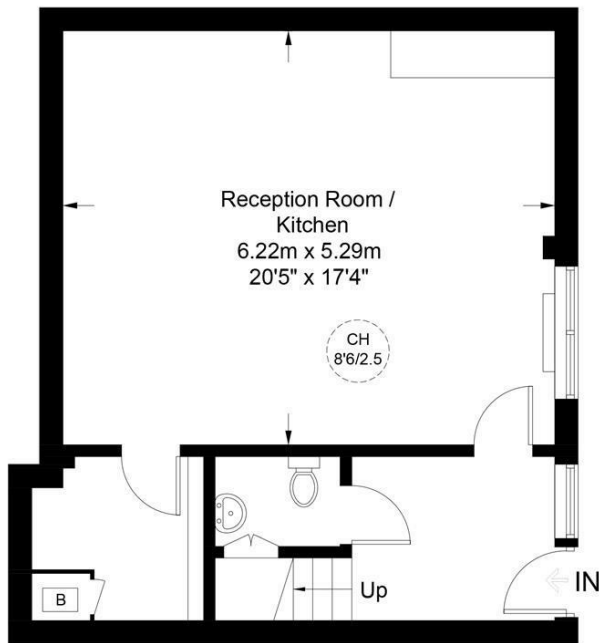
We are delighted to bring to market this exceptionally bright three bedroom mews house. Contemporary in style, the house is presented in excellent condition with neutral décor, hard wood flooring and modern kitchen. The accommodation comprises master bedroom with en suite bathroom, two further bedrooms, family bathroom, expansive reception room/kitchen with a large island/breakfast bar, utility room and guest WC.

Bathurst Mews is located within close proximity to the open spaces of Hyde Park and close to Hyde Park Station (Piccadilly line) and good transport links in to the West End and the City.



Bathurst Mews, W2

Approximate Gross Internal Area = 1032 sq ft / 95.9 sq m



Ground Floor

First Floor

This plan is for layout guidance only. Not drawn to scale unless stated. Windows and door openings are approximate. Whilst every care is taken in the preparation of this plan, please check all dimensions, shapes and compass bearings before making any decisions reliant upon them. (ID838069)

85 - 87 BAYHAM STREET
LONDON NW1 0AG

45 CIRCUS ROAD
LONDON NW8 9JH

T: +44 0207 1234 152
info@phillipsharrod.com

Energy Efficiency Rating		Environmental Impact (CO ₂) Rating	
Band	Score	Band	Score
A	92-100	A	1-23
B	81-91	B	24-47
C	69-80	C	48-74
D	55-68	D	75-100
E	39-54	E	101-150
F	21-38	F	151-200
G	1-20	G	201-250