

Offices to Let +44 (0) 20 3713 1950
25 - 26 Lime Street, EC3 1,028 – 4,011 Sq ft

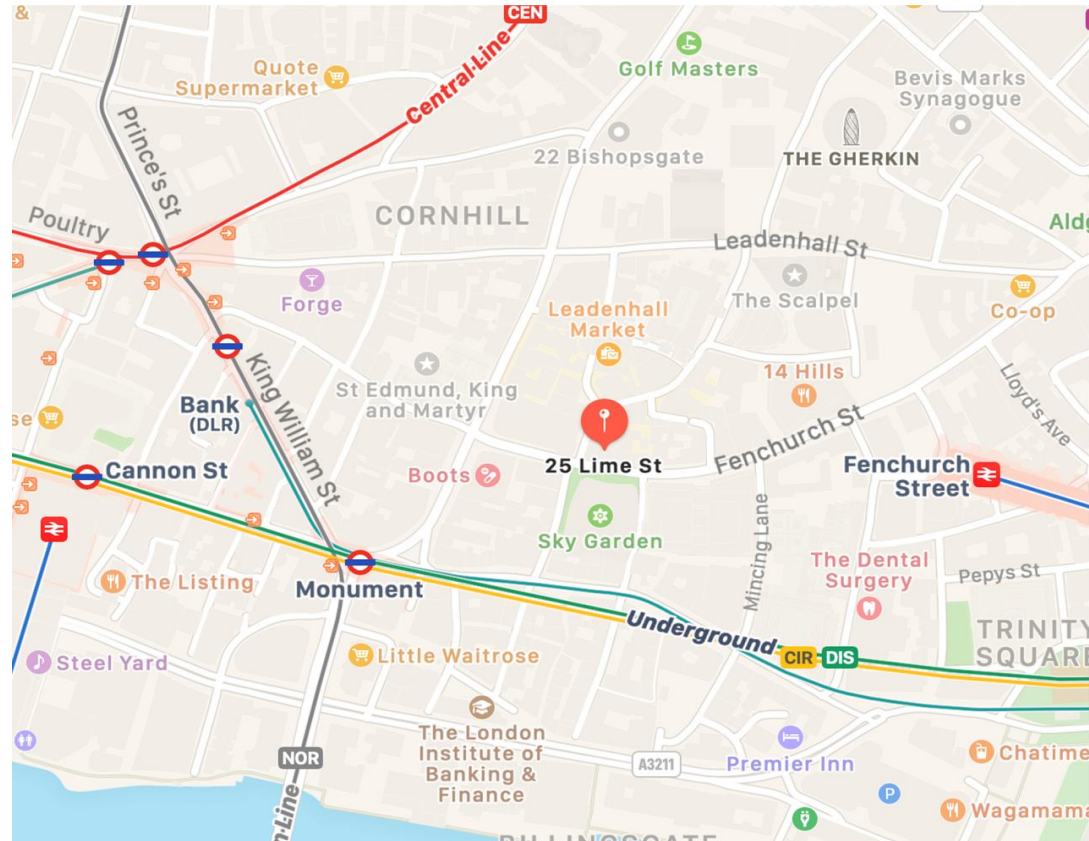


£25 psf refurbished office space in an excellent location

LOCATION

Situated on the east side of Lime Street, the building enjoys a prominent location in the heart of the Lloyds Triangle within EC3, within the immediate vicinity of Fenchurch Street, Leadenhall Market, and just two minutes walk from Lloyd's of London and the 'Walkie Talkie'.

Public transport connections are excellent, with Monument and Bank underground stations, and Fenchurch Street Station, all within 5 minutes' walk.



Contact us bbg real estate advisers
1 King Street, London, EC2V 8AU
www.bbgregal.com



Ben Hodder
+44 7880 242 178
ben.hodder@bbgregal.com



Fred Pope
+44 7880 242 177
fred.pope@bbgregal.com

Joint Agents:
Knight Frank
+44 20 7338 4000



| Floor | Sq Ft | Rent Psf | Status |
|-----------------|--------------|----------|-----------|
| 5 th | 1,217 | £25.00 | Available |
| 3 rd | 1,766 | £25.00 | Available |
| Ground | 1,028 | £25.00 | Available |
| Total | 4,011 | | |

LEASE: The floors are available on new short term leases, outside the security of tenure and compensation provisions of the Landlord and Tenant Act 1954 Part II (as amended), with a Landlord's rolling break option from 25th March 2022.

RENT: £25.00 per sq ft

RATES: £13.90 per sq ft p.a (20/21)

S/CHARGE: £12.53 per sq ft p.a. (20/21 est.)

VAT: The property is elected for VAT purposes.

EPC: C-51 (Full EPC available on request).

VIRTUAL TOUR: Available on request

AMENITIES

- Air Conditioning
- Raised Flooring
- Carpeting
- Kitchenette
- Manned Reception
- Suspended ceilings
- Good natural light
- 6 person passenger lift
- 24 hour access / Entry phone system

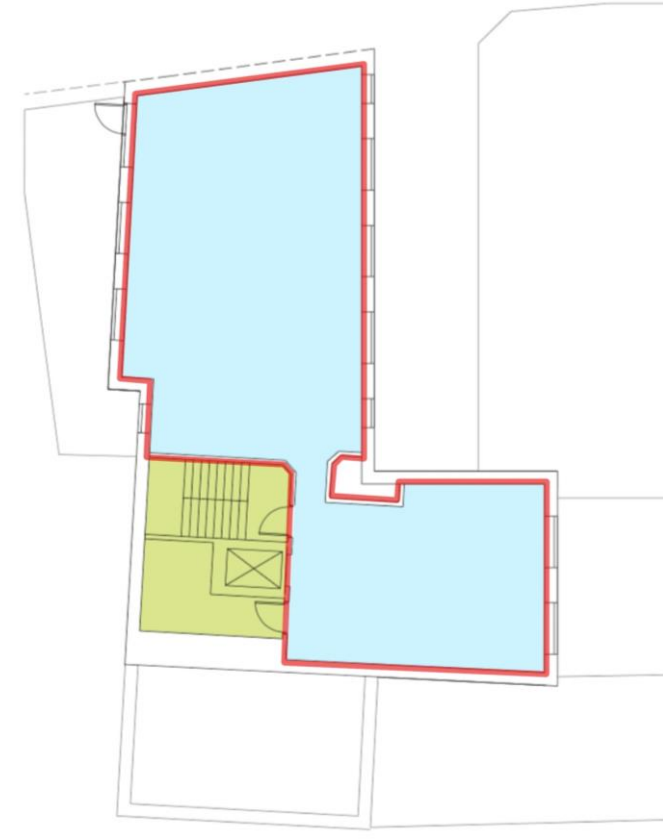
INDICATIVE FLOOR PLANS



GROUND FLOOR



THIRD FLOOR



FIFTH FLOOR