



293-299 Kentish Town Road

Holmes Road, London, NW5 2TJ

**Plug and Play Offices
located within a minutes
walk of Kentish Town Station**

219 to 14,877 sq ft
(20.35 to 1,382.12 sq m)

- Plug and Play
- 24 Hour Access
- x2 Terraces
- Kitchenette
- Suspended Ceiling
- Refurbished WC's
- Perimeter Trunking
- Comfort Cooling
- Bike Racks

293-299 Kentish Town Road, Holmes Road, London, NW5 2TJ

Summary

| | |
|----------------|--------------------------------------|
| Available Size | 219 to 14,877 sq ft |
| Rent | £39.50 per sq ft |
| Rates Payable | £10.93 per sq ft 2022/23 estimate |
| Service Charge | N/A |
| Car Parking | N/A |
| Estate Charge | N/A |
| EPC Rating | D |

Description

The property provides newly refurbished open plan office space and benefits from dual access from both Holmes Road and Kentish Town Road.[]

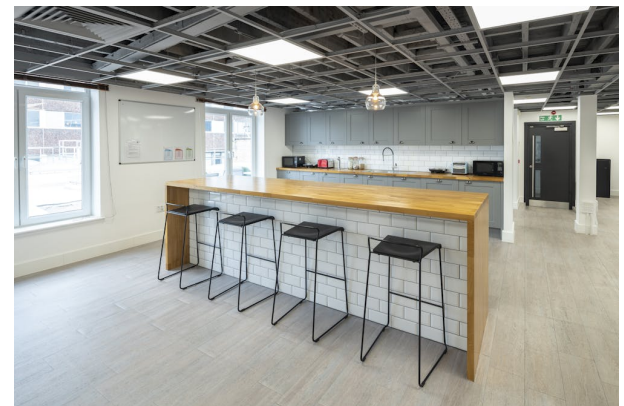
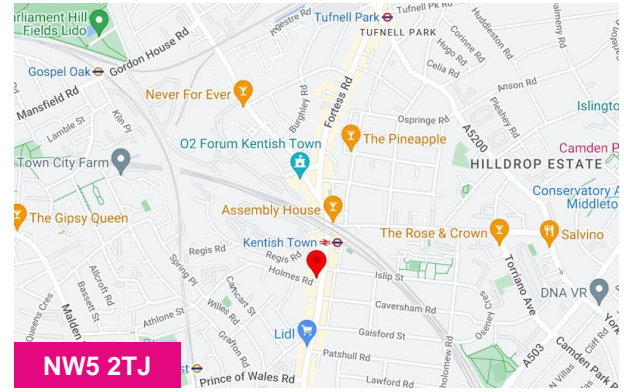
Location

The property is located on Kentish Town Road, the area's main commercial thoroughfare with great transport links via underground (Northern Line) and over ground at Kentish Town station.

Accommodation

The accommodation comprises of the following

| Name | sq ft | sq m | Availability |
|--------------|---------------|-----------------|--------------|
| 3rd | 3,055 | 283.82 | Available |
| 2nd | 4,976 | 462.29 | Available |
| 1st | 6,213 | 577.21 | Available |
| Ground | 632 | 58.71 | Available |
| Total | 14,876 | 1,382.03 | |



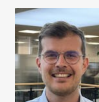
Viewing & Further Information



Fergus Findlay

07796510205

Fergus.findlay@bbgreal.com



Fred Pope

07886170666

fred.pope@bbgreal.com