



## The Adelphi

1-11 John Adam Street, London, WC2N 6EZ

**AVAILABLE JUNE 2024:  
2,971 sf Part 6th Floor - Fully  
Fitted (previous tenant fit  
out) or can be provided in  
open plan, CAT A, if required**

**2,971 sq ft**  
(276.01 sq m)

- Landmark Art Deco Office Building
- Fully Fitted Floor
- Concierge
- Air conditioning
- Raised floors
- Shower facilities
- Bicycle parking

# The Adelphi, 1-11 John Adam Street, London, WC2N 6EZ

## Summary

<b>Available Size</b>	2,971 sq ft
<b>Rent</b>	Rent on application
<b>Rates Payable</b>	£30.33 per sq ft
<b>Service Charge</b>	£13.66 per sq ft
<b>EPC Rating</b>	Upon enquiry

## Description

The Adelphi is a landmark Covent Garden office building and one of the best known buildings in London. The building is arranged over 15 floors looking over Victoria Embankment gardens with direct river views. The building has been newly refurbished with a remodelled entrance hall. New occupiers include The Economist Newspaper, FGS Global, Conde Nast and Spotify. The available space is located in the North West Wing of the 6th floor, overlooking Covent Garden and comprises 2,971 sq ft.

## Location

The Adelphi is prominently located at 1-11 John Adam Street and looks onto Victoria Embankment Gardens and the River Thames. The building is a short walk from Covent Garden and benefits from its amenities, including restaurants, shops, bars and theatres. Transport links are excellent, with Embankment Station (Bakerloo, Circle, District and Northern lines), Charing Cross Station (Bakerloo, Northern lines & National Rail services) and Covent Garden Station (Piccadilly line) all within a 5 minute walk.

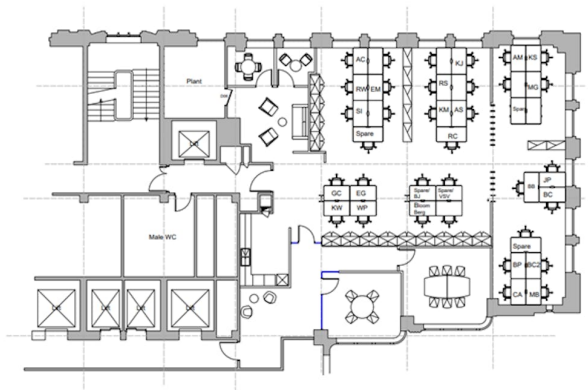
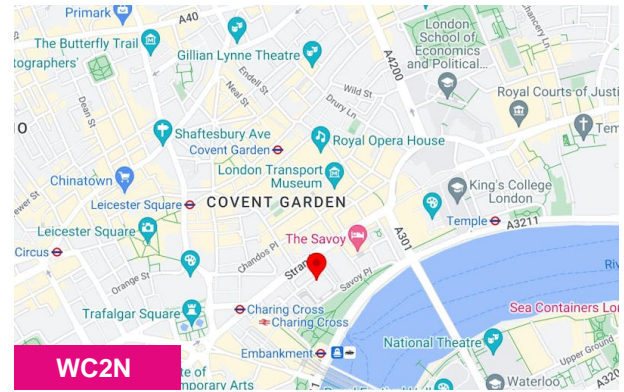
## Accommodation

CAT B floor (previous tenant fit out) but can be delivered in open plan CAT A if required

Name	sq ft	sq m	Tenure	Availability
6th - Part	2,971	276.01	To Let	Coming Soon
<b>Total</b>	<b>2,971</b>	<b>276.01</b>		

## Terms

Terms on application.



## Viewing & Further Information



**Tom Boggis**

020 3713 1952 | 07795 070 676

tom.boggis@bbgreal.com