



291-299 Borough High Street

London, SE1 1JG

REDUCED RENT: £32.50
psf. Bright refurbished
offices in the heart of
Borough.

1,297 to 4,743 sq ft
(120.50 to 440.64 sq m)

- Plug & Play
- Air conditioning
- Raised flooring
- Excellent natural light
- Entry phone system on each floor
- Showers
- Bike Racks

291-299 Borough High Street, London, SE1 1JG

Summary

Available Size	1,297 to 4,743 sq ft
Rent	£32.50 per sq ft
Rates Payable	£13.69 per sq ft
Rateable Value	£14
Service Charge	£7.10 per sq ft
EPC Rating	Upon enquiry

Description

The building is arranged over 6 floors, with the available accommodation on the 1st, 4th and 5th floors. Each floor has a kitchenette in situ, fully accessible raised flooring and excellent natural light. The building has a passenger lift, along with W.C. facilities and a shower in the common parts. Bike racks are to be installed in the lower ground floor.

Location

The building is located towards the Southern end of Borough High Street, on the eastern side and close to its junction with Trinity Street. Transport links in the area are excellent, with Southwark Station (Jubilee line) and Borough Station (Northern line) within close proximity. London Bridge Station (Northern line) is also close by, providing National Rail services.

Accommodation

The accommodation comprises of the following

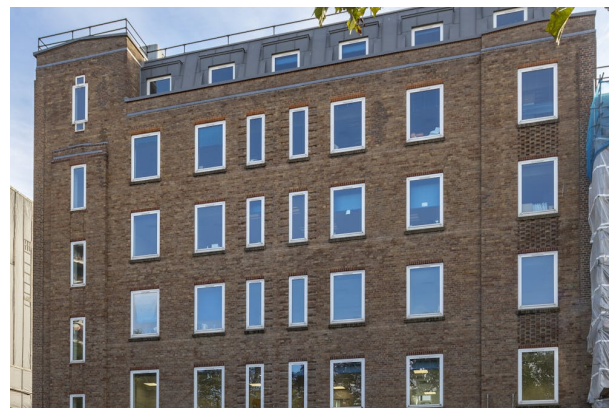
Name	sq ft	sq m	Availability
5th	1,297	120.50	Available
4th	1,735	161.19	Available
1st	1,711	158.96	Available
Total	4,743	440.65	

Viewings

For further questions or to arrange a viewing, please get in touch with Fred Pope or Ben Hodder at BBG.

Terms

New lease from the landlord for a term by arrangement.

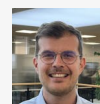


Viewing & Further Information



Tom Boggis

02037131950 | 07795 070 676
tom.boggis@bbgreal.com



Fred Pope

07886170666
fred.pope@bbgreal.com



Fergus Findlay

07796510205
Fergus.findlay@bbgreal.com