

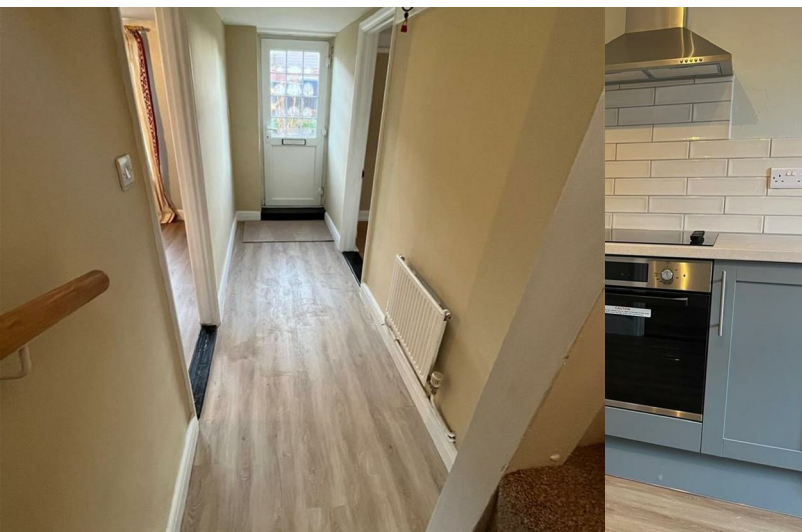
6 The Street, Freston, Ipswich, IP9 1AF

Available from: 9th January 2026
Furnishing: Not specified

Rent: £1,450 Per month
Deposit required: £1,673

THE
LETTING
DEPARTMENT





NEWLY REFURBISHED THREE BEDROOM COTTAGE

- Off Road Parking
- New Kitchen
- Shotley Peninsula
- Large garden
- New Bathroom
- Close to Ipswich

6 The Street in Freston is a bright, well proportioned three bedroom cottage. The property is currently being fully refurbished including a new kitchen and bathroom, new carpets and complete redecoration. The refurbishment will be completed early January.

Description

You enter the property into a central hallway. Off this is a well proportioned living room with large windows, fire place and storage cupboards. Opposite the living room is the kitchen/dinner. Again this room has large windows. It also has a new contemporary kitchen with base and wall units, together with a brand new oven, hob and extractor hood. There is also space for a dishwasher. At the opposite end is the dining area overlooking the front of the property.

Through the kitchen is the toilet and wet room, together with a separate utility room. There is also access to the garden.

On the first floor there are three double bedrooms, two with dual aspect windows.

Outside

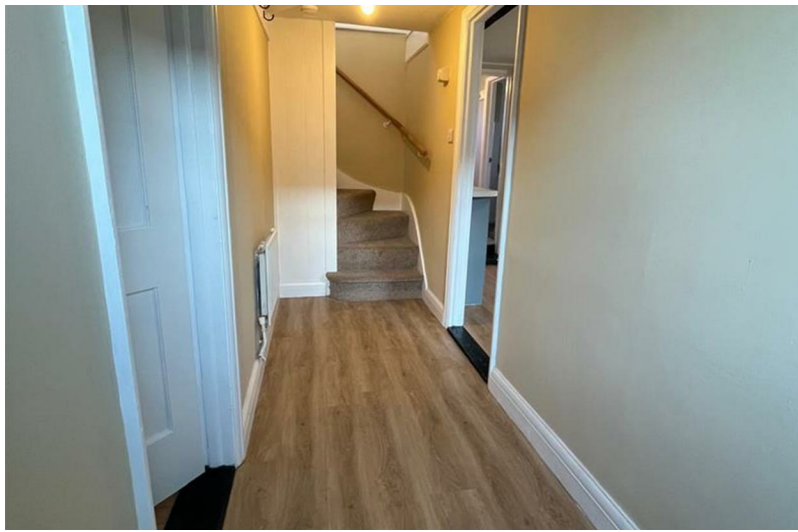
The property is fully fenced and pets will be considered. There is also off road parking for two or three cars at the front. The back garden is a good size, mainly laid to lawn.

Freston is located on the Shotley Peninsula giving countryside living but also being close to amenities with Ipswich and its mainline train station, 4 miles away and the Suffolk Food Hall just around the corner. Freston is also known for the popular pub, The Freston Boot.

Pets will be considered on an individual basis.

Local Authority and Council Tax
Babergh, Band C

EPC Rating
Current E(51). Potential (0).



All enquiries:

Donna Spark
donna@thelettingdepartment.co.uk

The Letting Department
info@thelettingdepartment.co.uk
01473 372 222