

2 Blenheim Meadow, Nedging Tye, Ipswich, IP7 7GA

Available from: 12th January 2026
Furnishing: Unfurnished

Rent: £1,800 Per month
Deposit required: £2,076

THE
LETTING
DEPARTMENT





A very well presented modern four bedroom detached family home with garage and off-road parking

- Modern Property
- 4 Bedrooms
- Private rear garden
- Off-road Parking
- Ensuite

The Letting Department are pleased to be able to offer this modern four bedroom detached property with a secluded rear garden, garage and off-road parking.

A spacious entrance hall leads into the sitting room, study, cloakroom and kitchen/diner. The sitting room has a red brick fireplace with wood burner and double doors which lead onto the sun terrace and garden, providing ample natural light. The kitchen/diner is fitted with a range of base and eye level units and integrated appliances including an oven with hob, dishwasher, washer/dryer and fridge/freezer. There is also a freestanding Beko American style fridge/freezer. The ground floor also benefits from under floor heating.

On the first floor there are four bedrooms and a family bathroom. The spacious principal bedroom has large mirrored wardrobes, a wall mounted television and ensuite. Bedroom three also benefits from built in storage.

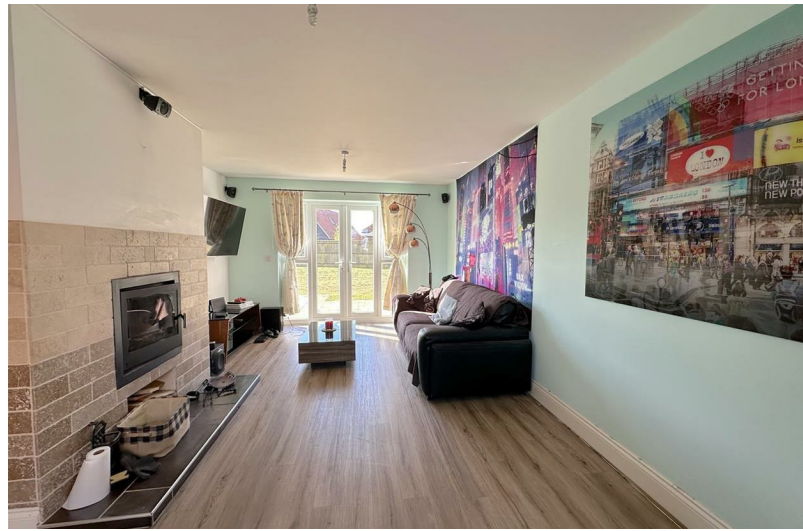
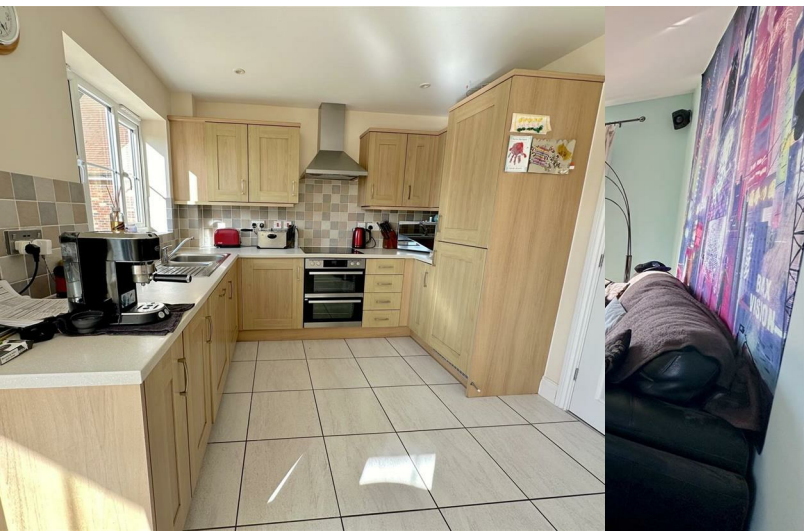
The property benefits from an integral single garage and a driveway, with parking for several vehicles.

To the rear of the property is a private secluded garden with sun terrace, which is mainly laid to lawn with established trees and shrubs.

The property is available from 12th January 2026.

Local Authority and Council Tax
, Band E

EPC Rating
Current C(69). Potential C(80).



All enquiries:

Leanne Murphy
leanne@chapmanstickels.co.uk

The Letting Department
info@thelettingdepartment.co.uk
01473 372 222