



ORCHARD HOUSE

Polstead Heath | Suffolk



Chapman Sticks





Chapman Stickels

AN IMPOSING DOUBLE FRONTED VICTORIAN HOUSE DISCREETLY POSITIONED
IN AROUND 2.6 ACRES

- Entrance hall • Reception hall • Drawing room • Sitting room • Dining room •
- Kitchen / breakfast room • Utility / boot room • Cloakroom • Main bedroom suite •
- Guest bedroom suite • 4 further bedrooms • Family bathroom • Further shower room •
- Barn / machinery store • Planning permission for 2-bay cart lodge • Orchard •
- Gardens and meadows • In all, about 2.6 acres •

Hadleigh – 4 miles / Colchester – 11 miles / Sudbury 10 miles





The Property

Set well back in its secluded plot, Orchard House is believed to date from around 1880 and despite being a fine example of a late Victorian house, the property is unlisted. In 2005, a three-storey rear addition was built, which has more than doubled the original floor area. The resultant accommodation, which now covers some 3,090 sq.ft, is well-proportioned and provides an abundance of natural light throughout.

Typically for a house of its ilk, the original section provides equally sized front reception rooms set either side of a central entrance hall, both with fireplaces and bay windows overlooking the front cherry orchard. This arrangement is mirrored directly above, where bedrooms three and four offer the same proportions and attractive vista via sash windows.

The central part offers a large reception hall to one side, which is currently the main entrance point to the house. This leads through to the twin aspect dining room and kitchen / breakfast room, which are divided by twin double doors. The kitchen is fitted with solid oak units and kitchen island, black granite work surfaces and electric range cooker. The breakfast area provides a large central bay window, with French windows leading onto a rear terrace.

The remaining first floor consists of a welcoming landing with the two main rear bedrooms both providing ensuite shower rooms and views over the principal garden. The front bedrooms are served the family bathroom.

The second floor offers two further double bedrooms, each with dormer windows giving far-reaching views over the main lawn and meadows beyond. Both bedrooms share a shower room via a central landing.

Outside, the property is approached via a shingle driveway to one side, which is defined by a large front cherry orchard giving an appealing approach. The main parking area is immediately to the western side of the house, which adjoins an unsurfaced track which leads to the rear meadows. The main meadow consists of an expanse of pasture with oak saplings, all bound by established field hedges with arable farmland beyond.

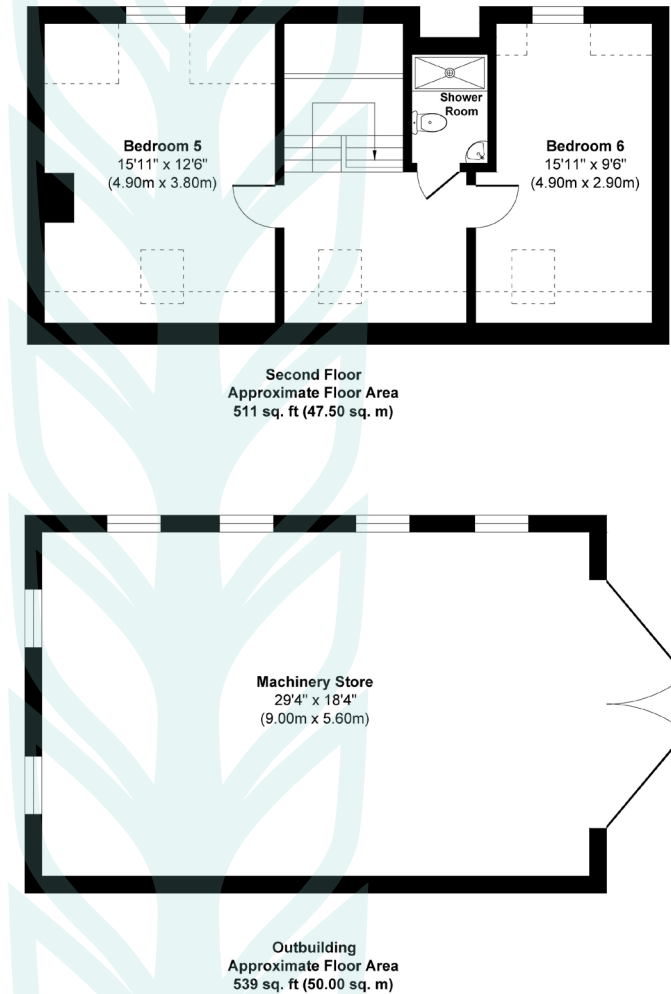
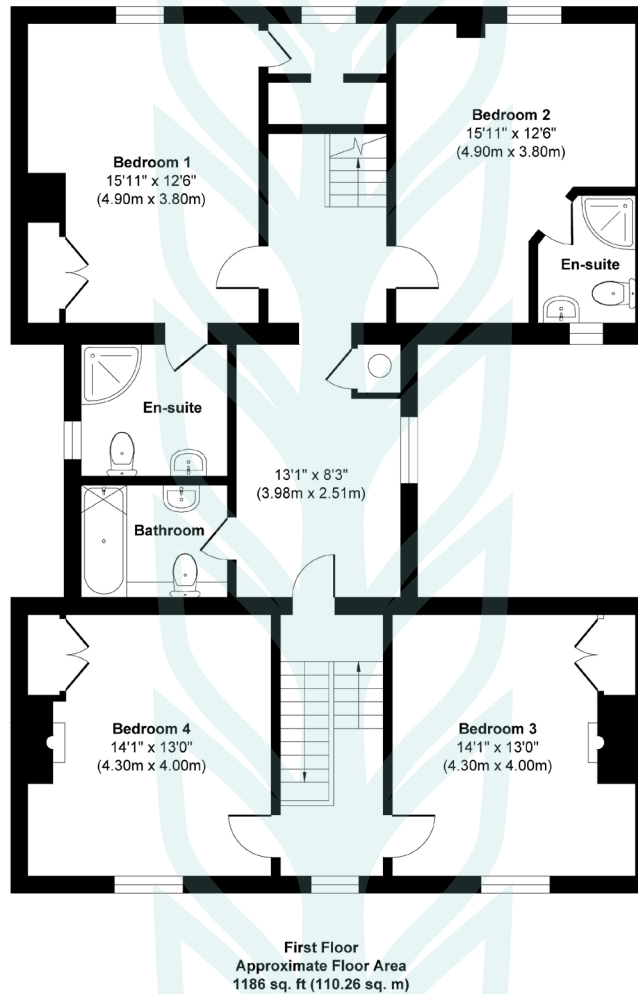
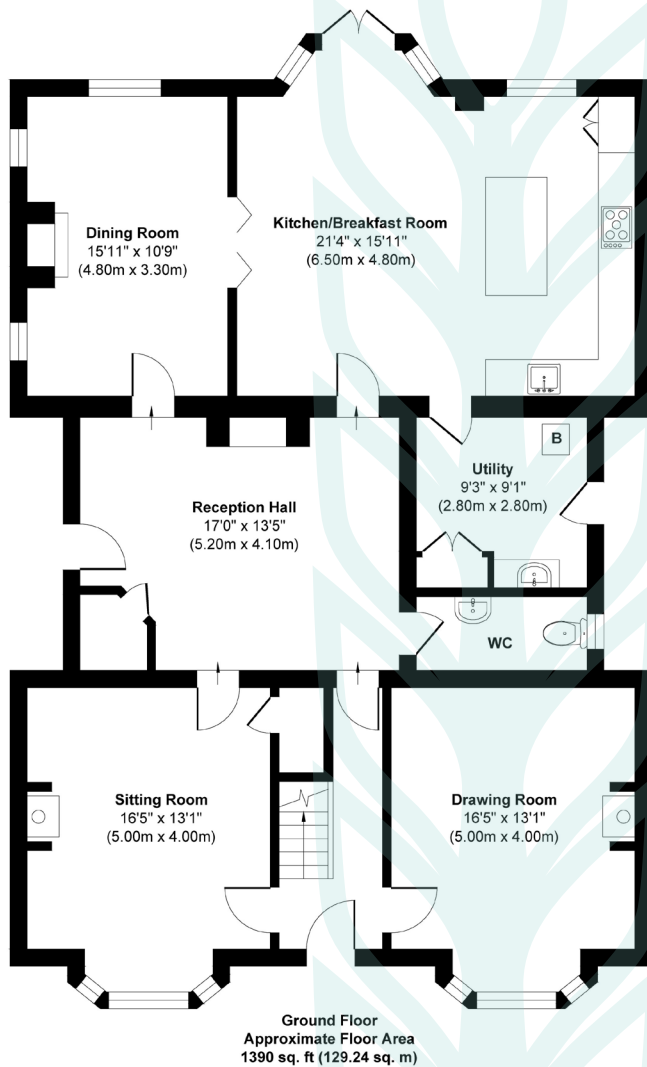
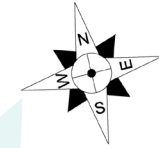
The smaller, central meadow adjoins the rear lawn by a line of mature trees which includes, apple, walnut and ash. Box hedging defines the rear patio which gives access to the dining area to the breakfast room.

Located in the front section of the main meadow is a modern barn / machinery store set on a concrete plinth. Power is connected.





Orchard House, Straight Road, Polstead Heath, CO6 5BB



Approx. Gross Internal Floor Area 3087 sq. ft / 287.00 sq. m.
Approx. Gross Internal Outbuilding Area 539 sq. ft / 50.00 sq. m.
Illustration for identification purposes only, measurements approximate, not to scale. Copyright

Agents note

Under the same planning permission which approved the extension, permission was also granted for a two-bay cart lodge. As building works have commenced, the approval has no time restraints for its construction.

Location

Set in the centre of this well-regarded hamlet, Polstead Heath is a small rural community situated some 3 miles to the west of Hadleigh. Hadleigh itself provides excellent facilities including supermarket, shops, restaurants, pubs, and schools.

Services

Mains water, drainage and electricity are connected. Fibre optic broadband. Oil-fired heating.

Local Authority and Council Tax

Babergh with Mid Suffolk District Council
Band F (2024)



Chapman Stickels

The Corn Exchange,
Market Place,
Hadleigh,
Suffolk,
IP7 5DN

info@chapmanstickels.co.uk
www.chapmanstickels.co.uk

01473 372 372

All enquiries:

Benedict Stickels
ben@chapmanstickels.co.uk

Cleo Shiel
cleo@chapmanstickels.co.uk



rightmove

PrimeLocation.com

onTheMarket.com

Zoopla



Scan the QR code to visit
our website



IMPORTANT NOTICE

Chapman Stickels states these particulars are for general information only and do not constitute an offer or contract or part thereof. All descriptions, photographs and plans are for guidance only and should not be relied upon as statements or representations of fact. All measurements are approximate where stated. Any prospective purchaser must satisfy themselves of the accuracy of the information within these particulars by inspection or otherwise. Chapman Stickels does not have any authority to give any representations or warranties whatsoever in relation to this property (including but not limited to planning/building restrictions), nor can it enter into any contract on behalf of the client. We do not accept responsibility for any expenses incurred by prospective purchasers in inspecting properties which have been sold, let or withdrawn. If there is anything of particular importance to you, please contact us where we will endeavour to have any information or queries checked.