



TUDOR HOUSE

Bildeston | Suffolk



Chapman Sticks

TUDOR HOUSE, 7 CHAPEL STREET, BILDESTON, SUFFOLK, IP7 7EP

Hadleigh – 5 miles
Ipswich – 14 miles
Bury St Edmunds – 15 miles

- Sitting room • Kitchen • Dining room • WC •
- 4 bedrooms (ensuite to main) • 5th bedroom / Office •
- Family bathroom •

The Property

Located in the centre of the village, 7 Chapel Street forms part of the attractive street scene of similar period properties along Chapel Street. The house is fronted with 19th Century gault brick, with the original timber frame behind which is probably 16th Century. As such, this 3-storey house provides much historic charm with numerous features including the exposed oak frame and an inglenook fireplace to the sitting room. The stylish kitchen has recently been refitted, which leads into the dining room which forms part of a much later two storey extension, with full-height cupboards and access to the garden. Via a spiral staircase, the remaining 2 floors all provide well-proportioned bedrooms (with family bathroom and ensuite shower room) with further exposed oak wall and ceiling beams which is a notable feature to the house.

The rear garden enjoys a south-facing aspect with a brick terrace leading onto the lawn with shrubs abutting red brick walls to all sides. To the far southern boundary is a timber lock-up store.

Location

Bildeston is a popular mid-Suffolk village approximately 5 miles from the market town of Hadleigh. The village is well served by a thriving Post Office/General Stores, Doctor's Surgery, Primary School, the acclaimed Bildeston Crown, pubs, and the nearby Hollow Trees Farm Shop.

AN ATTRACTIVE GRADE II LISTED VILLAGE HOUSE OVERLOOKING BILDESTON'S MARKET SQUARE



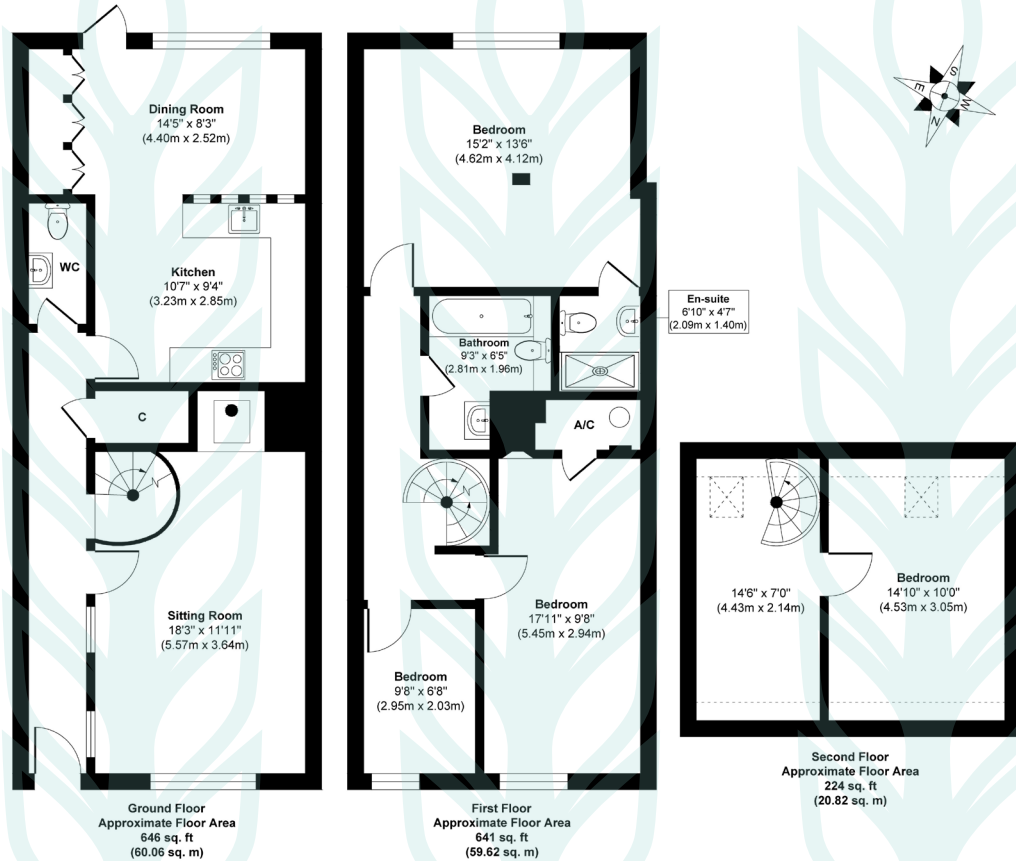
Services

Mains water and electricity are connected. Electric underfloor heating to the ground floor.

Local Authority and Council Tax Band
Babergh with Mid Suffolk District Council
Band D (2024)

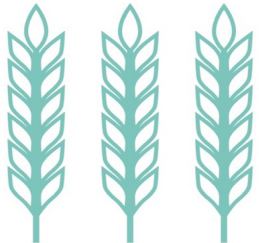


7 Chapel Street, Bildeston, IP7 7EP



Approx. Gross Internal Floor Area 1511 sq. ft / 140.50 sq. m

Illustration for identification purposes only, measurements are approximate, not to scale.



Chapman Stickels

The Corn Exchange,
Market Place,
Hadleigh,
Suffolk,
IP7 5DN

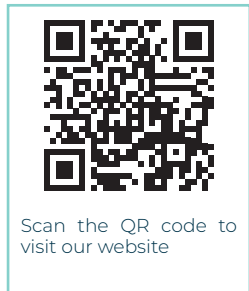
info@chapmanstickels.co.uk
www.chapmanstickels.co.uk

01473 372 372

All enquiries:

Benedict Stickels
ben@chapmanstickels.co.uk

Cleo Shiel
cleo@chapmanstickels.co.uk



rightmove

OnTheMarket.com

Zoopla

PrimeLocation.com

IMPORTANT NOTICE
Chapman Stickels states these particulars are for general information only and do not constitute an offer or contract or part thereof. All descriptions, photographs and plans are for guidance only and should not be relied upon as statements or representations of fact. All measurements are approximate where stated. Any prospective purchaser must satisfy themselves of the accuracy of the information within these particulars by inspection or otherwise. Chapman Stickels does not have any authority to give any representations or warranties whatsoever in relation to this property (including but not limited to planning/building restrictions), nor can it enter into any contract on behalf of the client. We do not accept responsibility for any expenses incurred by prospective purchasers in inspecting properties which have been sold, let or withdrawn. If there is anything of particular importance to you, please contact us where we will endeavour to have any information or queries checked.