

50A High Street, Hadleigh, IP7 5AL

Available from: 12th July 2024  
Furnishing: Unfurnished

Rent: £950 Per month  
Deposit required: £1,096

THE  
**LETTING**  
**DEPARTMENT**







## BRIGHT, SPACIOUS, TWO BEDROOM APARTMENT

- Bright, Spacious Apartment
- Heart of Hadleigh
- 2 Bedrooms
- Excellent Presentation

50A High Street is a very well presented first floor, two bedroom apartment in the heart of the Hadleigh High Street. On entering from the high street, the property has stairs leading to the apartment with exposed original oak beams. The property has a large, bright sitting room with sash windows to the front. The modern, kitchen is off the sitting room and has a built in cooker and hob, together with plumbing for a washing machine.

The two bedrooms are off the landing. The master bedroom is also a bright room with two large sash windows at the front and a built in wardrobe. The second bedroom is a good sized double with attached dressing/large wardrobe. Off the landing is also a modern family bathroom.

### Location

The property benefits from being on the High Street with the ability to walk to all amenities in Hadleigh. Hadleigh is a sought after historic market town situated about 9 miles from Ipswich, 8 miles from Manningtree and about 14 miles from Colchester – all having main line services for London's Liverpool Street station. The bustling town centre offers a wide range of local amenities including restaurants, pubs, sports facilities and a wide selection of shops.

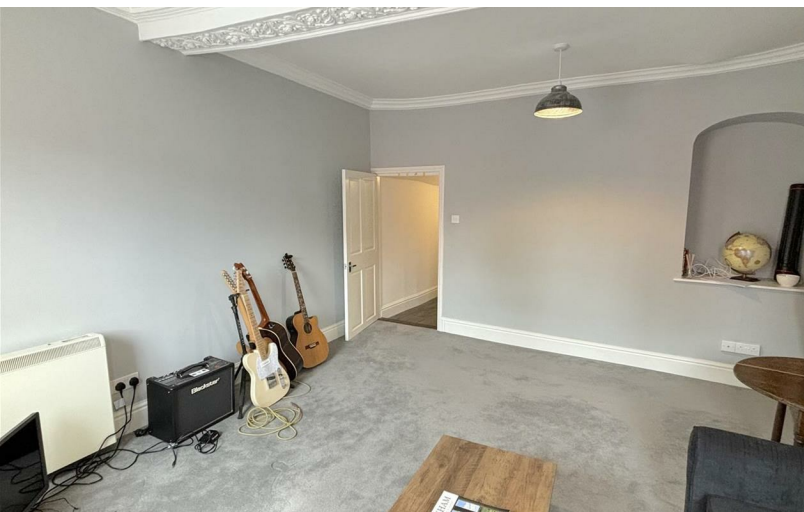
Agents Note: This property is not suitable for pets.

### Local Authority and Council Tax

Babergh District Council, Band B

### EPC Rating

Current E(40). Potential (0).



All enquiries:

**Donna Spark**

[donna@thelettingdepartment.co.uk](mailto:donna@thelettingdepartment.co.uk)

**The Letting Department**

[info@thelettingdepartment.co.uk](mailto:info@thelettingdepartment.co.uk)

01473 372 222