



RENAISSANCE COTTAGE

Boxford



Suffolk



Chapman Sticks

RENAISSANCE COTTAGE, STONE STREET, BOXFORD, SUFFOLK, CO10 5NR

A CHARMING GRADE II LISTED SEMI-DETACHED COTTAGE WITH A
PRETTY GARDEN A SHORT DISTANCE FROM THE POPULAR
VILLAGE OF BOXFORD

Hadleigh 5 - Miles

Sudbury 7 - Miles

Colchester - 13 Miles

-
- Living room • Dining room • Kitchen • Cloakroom •
 - 2 Bedrooms • Bathroom • Garden •





The Property

Renaissance Cottage is a Grade II Listed semi-detached cottage situated in Stone Street, a picturesque hamlet just outside the well served and popular village of Boxford.

The property retains considerable character with exposed beams, stripped wood flooring upstairs and a feature inglenook fireplace in the living room. A particular feature is the rear garden which is bounded by a babbling brook and enjoys uninterrupted views over the adjoining pastureland.

The living room has secondary glazing whilst the dining room has a casement door to the rear terrace. The kitchen is equipped with a range of floor and wall cupboards, plumbing for a washing machine, space for a fridge and an electric cooker point.

On the first floor there is a double bedroom with a large ensuite bathroom and a smaller bedroom.

Outside

The garden of Renaissance Cottage is a real feature with a brick paved terrace, lawn, and the distant view.

Location

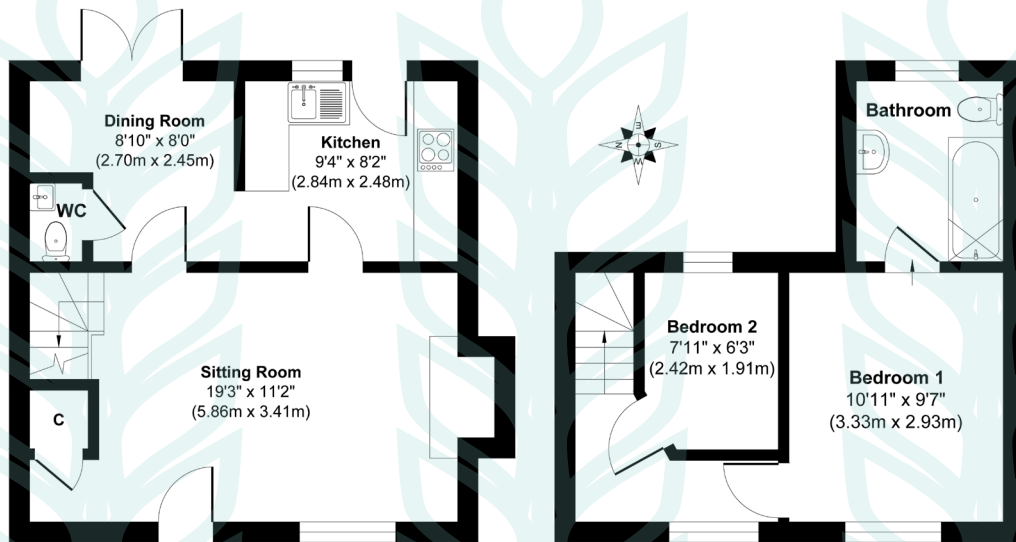
Boxford is a popular village, which also favours the commuter, offers a wide range of amenities including local shops, post office, doctors surgery, 2 pubs and a primary school. The 36 hole Stoke by Nayland Golf Club and Spa lies about 2 miles, as well as outstanding restaurants in nearby Lavenham and Stoke by Nayland.

Services

Mains water, electricity and drainage are connected. Oil-fired central heating.

Local Authority and Council Tax
Babergh with Mid Suffolk District Council
Band C (2023)

Renaissance Cottage, 15 Stone St, Boxford, CO10 5NR



Ground Floor
Approximate Floor Area
380 sq. ft (35.33 sq. m)

First Floor
Approximate Floor Area
272 sq. ft (25.24 sq. m)

Approx. Gross Internal Floor Area 652 sq. ft / 60.58 sq. m.

Illustration for identification purposes only, measurements approximate, not to scale. Copyright



Chapman Stickels

The Corn Exchange,
Market Place,
Hadleigh,
Suffolk,
IP7 5DN

info@chapmanstickels.co.uk
www.chapmanstickels.co.uk

01473 372 372

All enquiries:

Benedict Stickels
ben@chapmanstickels.co.uk

Cleo Shiel
cleo@chapmanstickels.co.uk



Scan the QR code to visit our website



rightmove

PrimeLocation.com

OnTheMarket.com

Zoopla



IMPORTANT NOTICE
Chapman Stickels states these particulars are for general information only and do not constitute an offer or contract or part thereof. All descriptions, photographs and plans are for guidance only and should not be relied upon as statements or representations of fact. All measurements are approximate where stated. Any prospective purchaser must satisfy themselves of the accuracy of the information within these particulars by inspection or otherwise. Chapman Stickels does not have any authority to give any representations or warranties whatsoever in relation to this property (including but not limited to planning/building restrictions), nor can it enter into any contract on behalf of the client. We do not accept responsibility for any expenses incurred by prospective purchasers in inspecting properties which have been sold, let or withdrawn. If there is anything of particular importance to you, please contact us where we will endeavour to have any information or queries checked.