



High-quality, fully fitted
office space in Covent Garden

77 KING
LONDON WC2

UNDERSTATED ELEGANCE

77 Kingsway has been stylishly refurbished to provide high-quality, fully fitted office accommodation. This prominent midtown building provides thoughtfully designed workspaces, benefitting from the vibrancy of Covent Garden and Holborn.



AVAILABILITY

FLOOR	SQ FT	SQ M
Part 5th	3,333	309.6
2nd	5,278	490.3
TOTAL	8,611	799.9

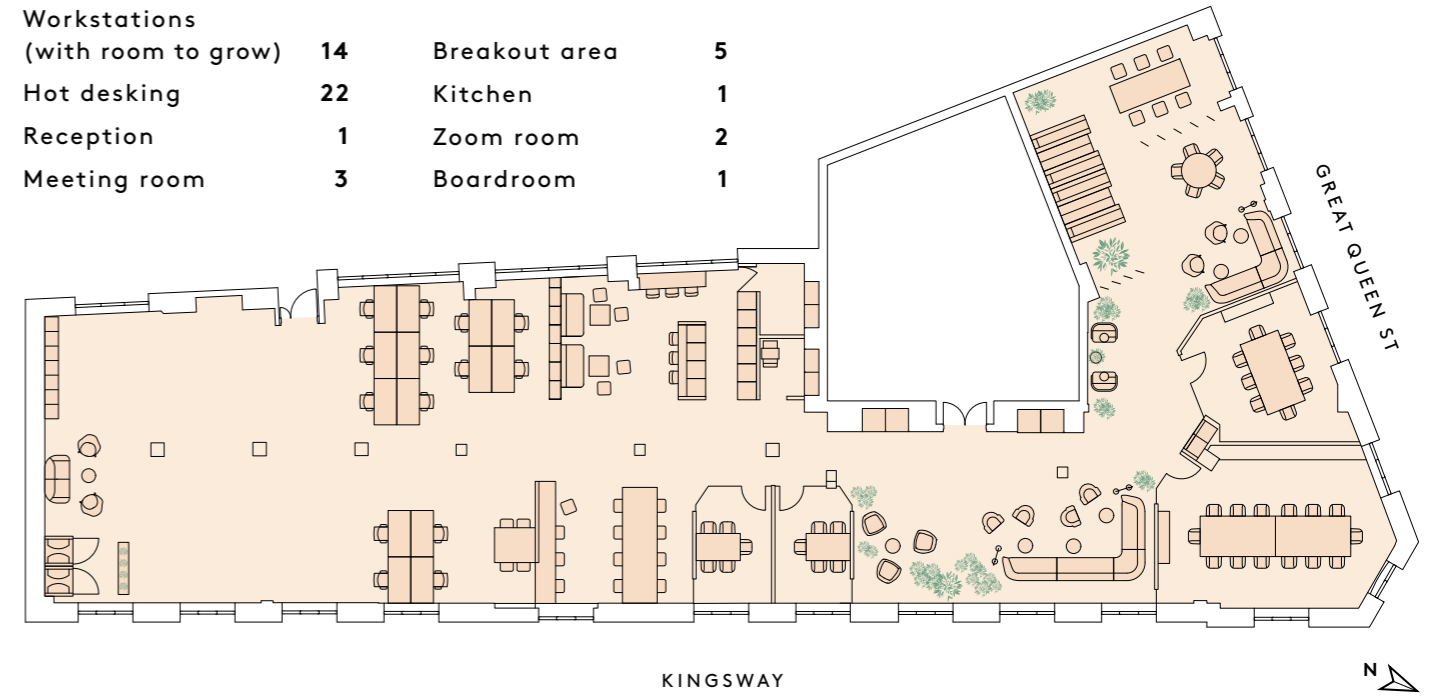
77 KING
LONDON



2ND FLOOR

5,278 Sq ft / 490.3 Sq m

Workstations (with room to grow)	14	Breakout area	5
Hot desking	22	Kitchen	1
Reception	1	Zoom room	2
Meeting room	3	Boardroom	1



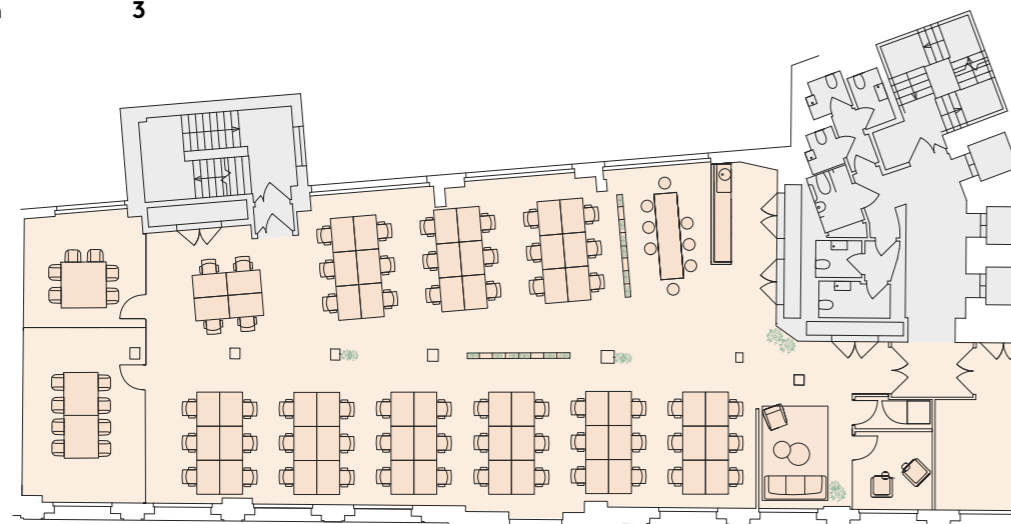
17
 ON WC2



PART 5TH FLOOR

3,333 Sq ft / 309.6 Sq m

Workstations	58	Breakout area	1
Soft seating	1	Kitchen	1
Meeting room	3		



KINGSWAY



KINGSWAY
WC2



BUILDING SPECIFICATION



Fully fitted accommodation



Refurbished reception with concierge



3 passenger lifts



VRF Air conditioning



Full access raised floors



17 Bike racks



4 Showers



Seven Dials Market



Lincoln's Inn Fields



Somerset House



FROM RETAIL, TO RELAXATION

Covent Garden is an international destination with a plethora of shops, restaurants, cafés, bars and culture. For relaxation you have incredible green spaces like Lincoln's Inn Fields on your doorstep and transport connectivity is second to none.



TOTTENHAM COURT ROAD



ARCADE FOOD HALL

- YMCA Club
- The Bloomsbury
- Radisson Blu
- Thistle
- Flight Club
- London Cocktail Club
- Oasis Sports Centre
- Flat Iron
- L'Escargot
- Soho House 40



SEVEN DIALS

- Seven Dials Market
- Flesh & Buns
- Fabrique Bakery
- Hawksmoor
- The Ivy
- Tatty Devine
- Dishoom
- Mamasons Dirty Ice Cream

CHINATOWN



LEICESTER SQUARE



- Burger & Lobster
- LSQ Rooftop



LEICESTER SQUARE

- Cymbox
- St Martin's Lane Hotel

COVENT GARDEN



COVENT GARDEN MARKET



- Agnes B
- SUSHISAMBA
- Balthazar
- Ladurée
- Clos Maggiore
- Sticks'n'Sushi
- Ave Mario
- The Ivy
- The Savoy



HOLBORN



- The Hoxton
- Bull At The Gate



Middle Eight

- Margot
- Barrafina

Club Quarters Hotel

LINCOLN'S INN FIELDS



- Coopers
- The Seven Stars

ALDWYCH

The Delaunay

Royal Opera House

Roasting Plant Coffee

SUSHISAMBA

Balthazar

The Waldorf Hilton

180 House

Ladurée

Christopher's

SOMERSET HOUSE



TEMPLE



VICTORIA EMBANKMENT

RIVER THAMES



Oliver Watkins

oliver.watkins@knightfrank.com
07976 577 325

Jonny Lee

jonny.lee@knightfrank.com
07885 389 426

Matt Lord

matt.lord@colliers.com
07970 384 347

Tash Atkinson

tash.atkinson@colliers.com
07936 338 767

Elizabeth Galbraith

elizabeth.galbraith@knightfrank.com
07966 247 607

Alex Kemp

alex.kemp@colliers.com
07881 610 962

Misrepresentation 1. Knight Frank and Colliers International on behalf of the vendor/lessor of this property whose agents Knight Frank and Colliers International, give notice that: (a) these particulars do not constitute in whole or in part an offer or contract for sale or lease; (b) none of the statements contained in these particulars as to the property are to be relied on as statements or representative of fact; and (c) the vendor/lessor does not make or give, and neither Knight Frank, Colliers International nor any of its members or any person in its employment has any authority to make or give, any representation or warranty whatsoever in relation to the property. The only representations, warranties, undertakings and contractual obligations to be given or undertaken by the vendor/lessor are those contained and expressly referred to in the written contract for sale or agreement for lease between the vendor/lessor and a purchaser or tenant. 2. Prospective purchasers or tenants are strongly advised to: (a) satisfy themselves as to the correctness of each statement contained in these particulars; (b) inspect the property and the neighbouring area; (c) ensure that any items expressed to be included are available and in working order; (d) arrange a full structural (and where appropriate environmental) survey of the property; and (e) carry out all necessary searches and enquiries. November 2021.