

# COVENT GARDEN



## 5 CHING COURT

# YOUR PART OF SOMETHING SPACE



## Choose your ideal office space

With over 380 offices, across the most recognised and vibrant areas of London's West End, you can choose the space that's ideal for your business.

From whole buildings to house your entire business, to small, boutique spaces for start-ups or solopreneurs, be it a blank canvas or hassle-free, fully fitted space, we offer a wide range of versatile and bespoke spaces in unbeatable central London locations.

Whether it's in Soho, Chinatown, Covent Garden, or Fitzrovia, you'll always have access to all the services and support you need. And, as your business grows, our flexible portfolio means you'll always have another ideal workspace to grow into.

## YOUR.SPACE

# YOUR BEAUTIFULLY BESPOKE SPACE



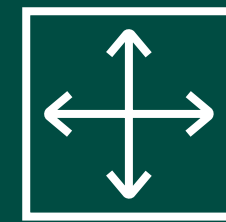
Right in the heart of historic Seven Dials, just steps away from the entertainment epicentres of Soho and Covent Garden, 5 Ching Court is ready and waiting.

Spanning 1,247 sq ft over the second and third floor, this newly refurbished and fully fitted townhouse offers a neutral and versatile platform.

Large sash windows, period features, and new timber flooring create an attractive setting, while a modern kitchenette provides a practical and welcoming space to unwind and refuel.



# YOUR SPECIFICATION



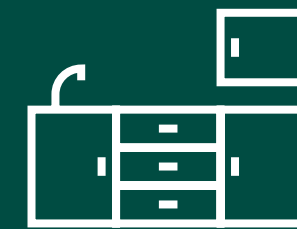
1,247 sq ft set over the second and third floors (floors can be taken together or separately)



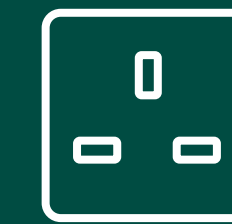
Building with period features



Boutique courtyard entrance



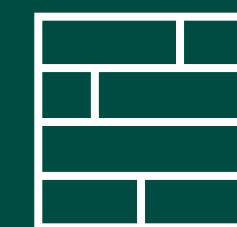
Modern kitchenette



Perimeter trunking



Fully fitted and furnished



Timber floors



New LED lighting

# YOUR SPACE

## SCHEDULE OF AREAS

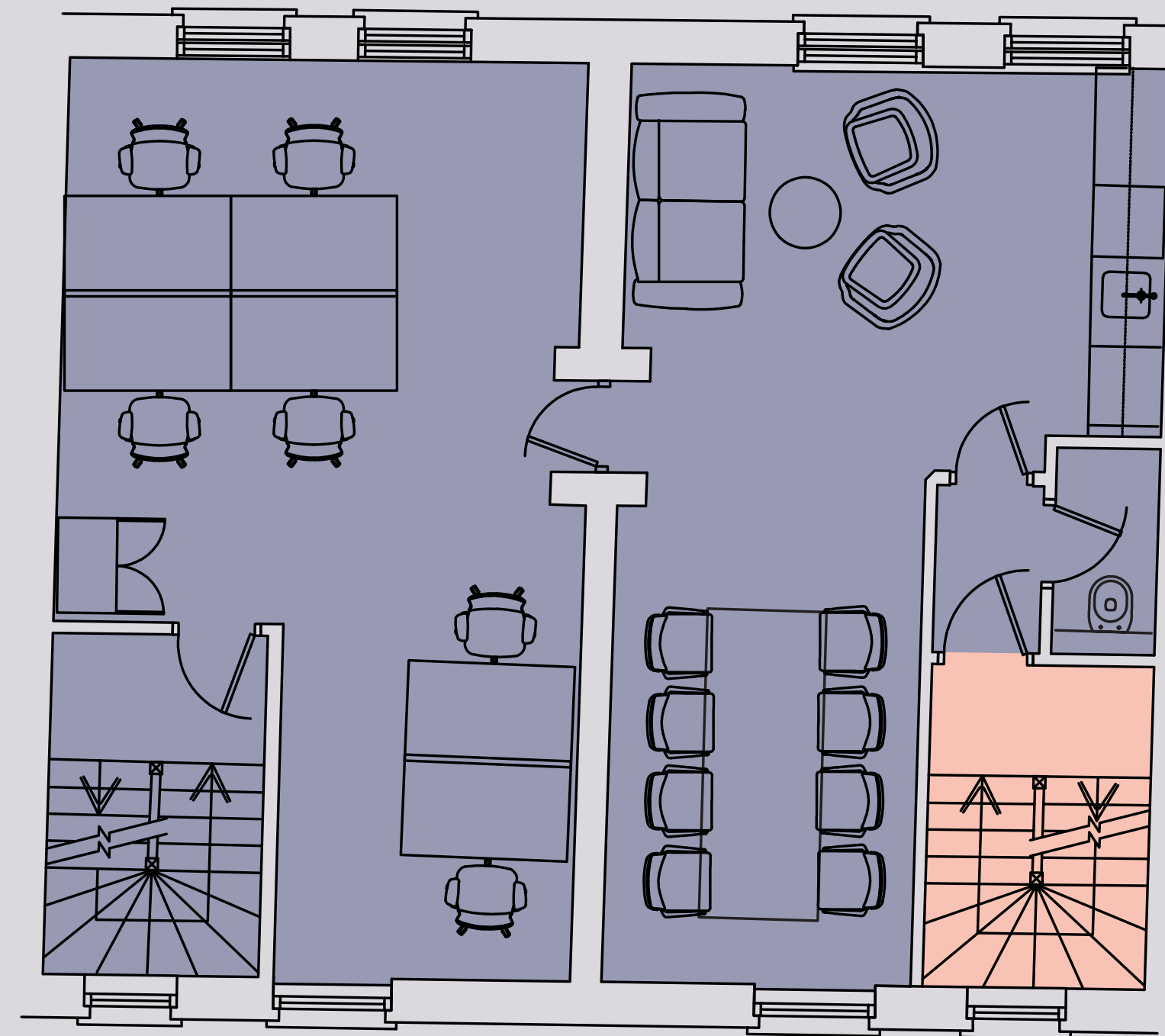
FLOOR	OFFICE (SQ FT)	OFFICE (SQ M)
Third	607	56.4
Second	640	59.4
<b>TOTAL</b>	<b>1,247</b>	<b>115.8</b>

## SECOND FLOOR

Office: 607 sq ft

### Accommodation Specification

6 Fixed Working Positions  
8 Person Meeting Table  
Kitchenette  
Breakout

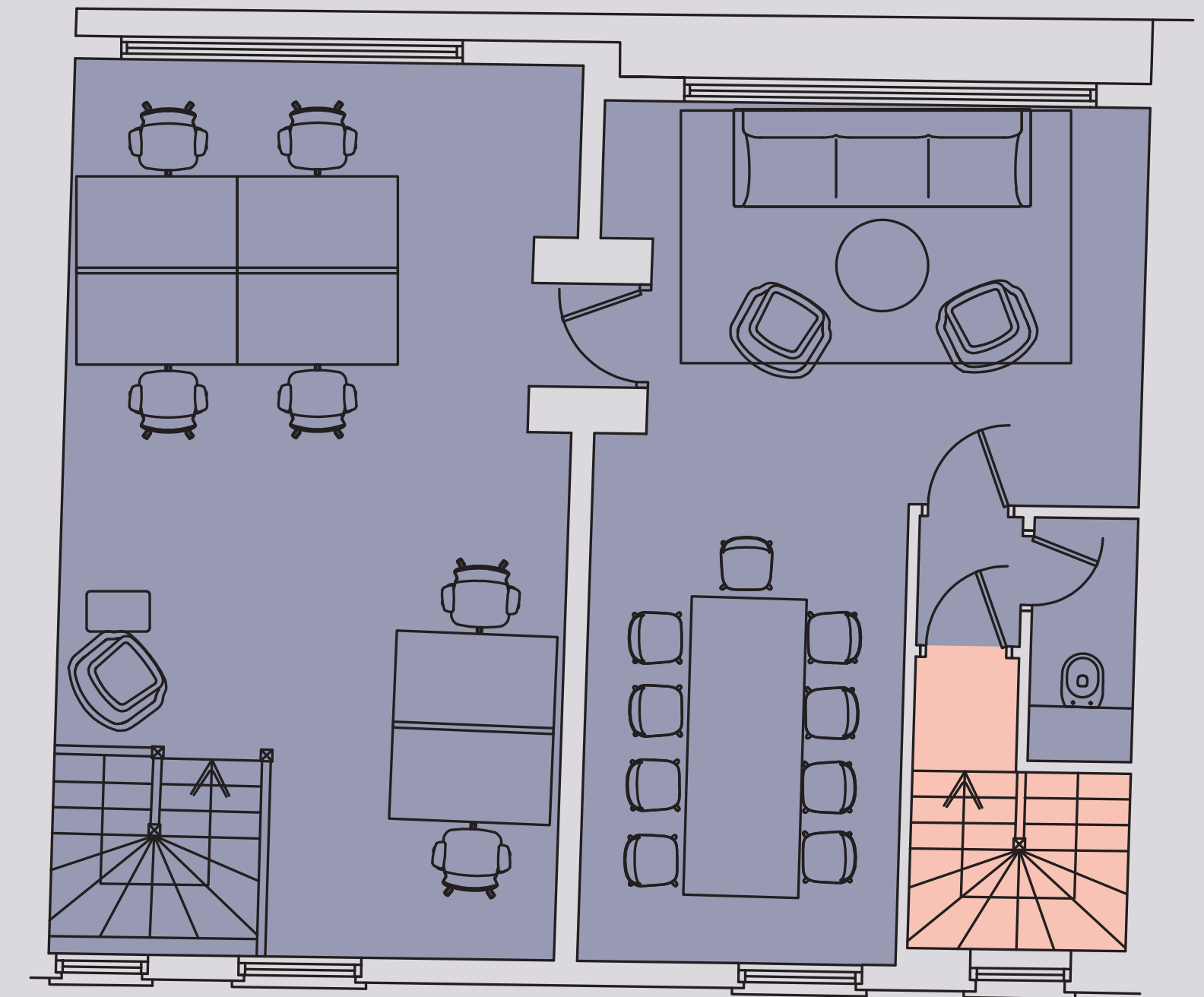


## THIRD FLOOR

Office: 640 sq ft

### Accommodation Specification

6 Fixed Working Positions  
9 Person Meeting Table  
Breakout





Monmouth Street



Floral Street



Gaucho



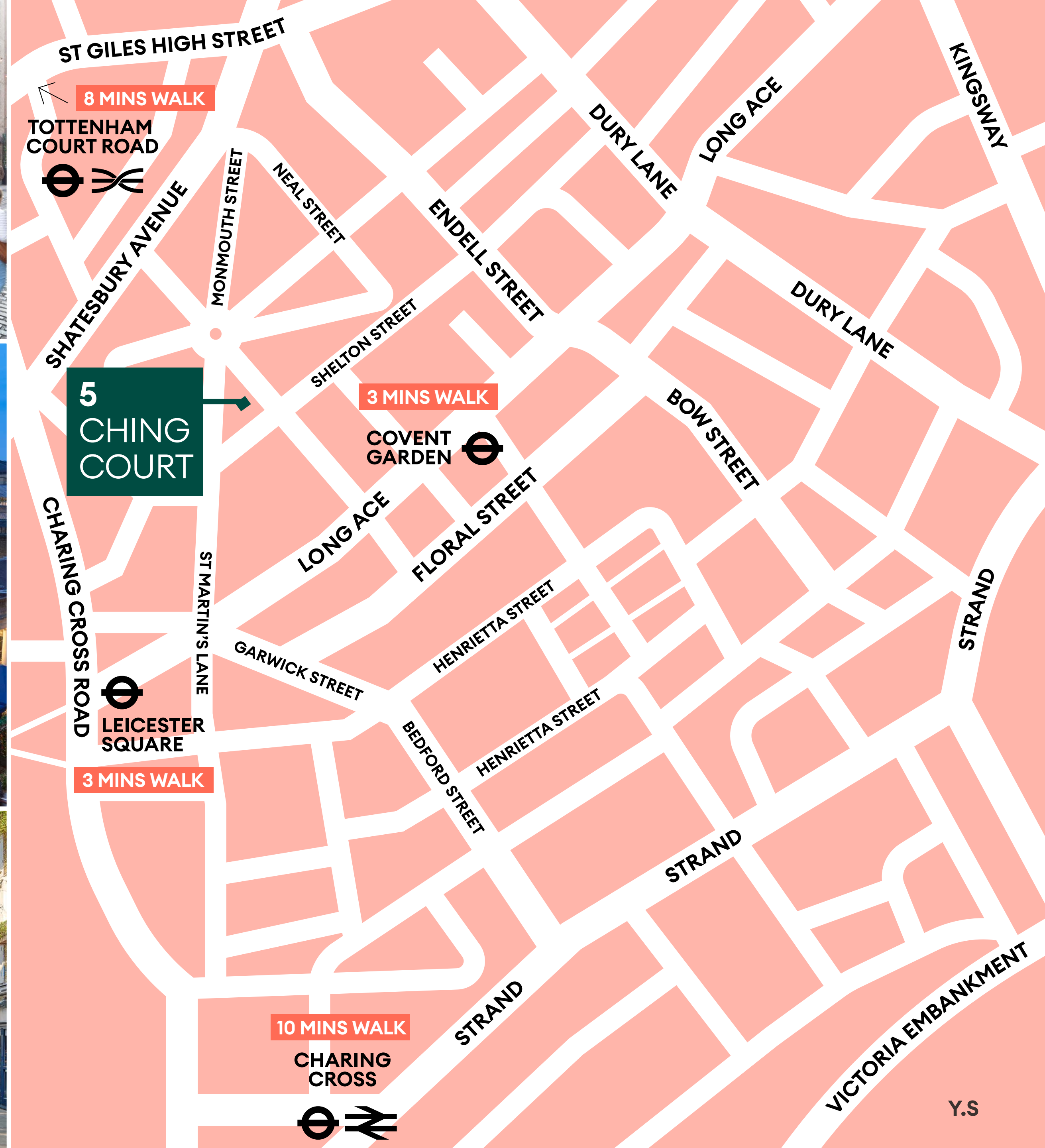
Covent Garden Piazza



06 King Street



Neal's Yard



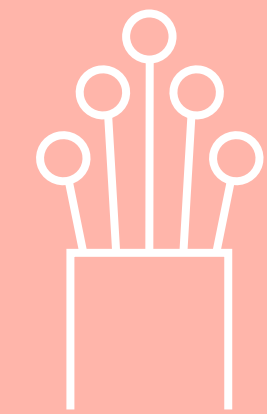
# YOUR ALL THE PERKS SPACE



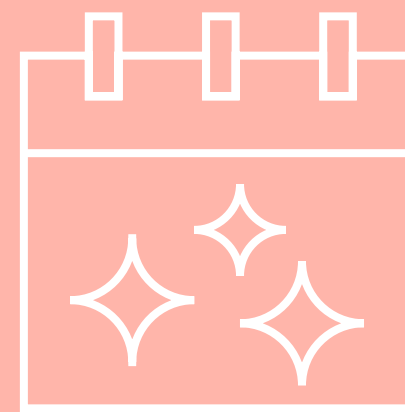
High standard of Estate Management from an on-site property management team



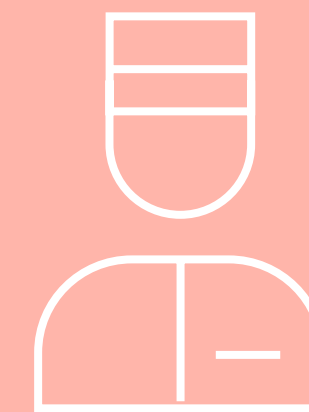
24-hour estate-wide security and cleaning services



Fast, simple connectivity via pre-agreed wayleaves



Access to year-round events, exciting pop-ups, art exhibitions, product launches and seasonal activations



24/7 concierge service, Covent Garden Lifestyle\*

\*Terms and Conditions apply



I Love Covent Garden scheme for discounts and perks at participating retailers and restaurants

# YOUR MAKE A DIFFERENCE SPACE



We care  
about our  
community.

We continue to **partner with community organisations** to tackle the issues that are most important to our local communities in particular the challenges faced by young and disadvantaged people.

We **provide funding to our local partners** in The Arts such as The Donmar Warehouse.

We boost **biodiversity and provide habitats across the portfolio** - our dedicated team of gardeners keep our green spaces thriving all year round.

We take a **retrofit first approach minimising environmental impact.**

Shaftesbury Capital are **committed to Net Zero Carbon by 2030.**



# YOUR 1,2,3, BREATHE SPACE



Take a breather from your desk and benefit from the improved air quality in the Estate's safe, clean pedestrianised streets.

Enjoy a moment of quiet in one of the neighbourhoods many green spaces.

Fit in a lunchtime workout at one of the gyms in our neighbourhoods; Peloton, DigMe, SoulCycle, Barry's Bootcamp, Third Space, Marshall Street Leisure Centre, Jubilee Hall, Nuffield Health, Chalk.



D I G M E

SOULCYCLE

BARRY'S

THIRD  
SPACE

EVERYONE  
URBAN SPA & WELLNESS  
MARSHALL ST



CHALK<sup>WI</sup>

## Focus on Wellness

# 5 CHING COURT

**RENT**  
£65.00 per sq ft

**RATES**  
£22.17 per sq ft

**SERVICE CHARGE**  
£13.61 per sq ft

**TOTAL OUTGOINGS**  
£100.78 per sq ft

**EPC**  
C

**FIBRE**  
G. Network



**SOPHIE CROSBIE**  
sophie.crosbie@colliers.com  
07936 338 778

**JAMIE QUINN**  
jamie.quinn@colliers.com  
07909 858 347

**LEAH NORAY**  
leah.noray@colliers.com  
07703 744 148



**CATHERINE LLOYD**  
catherine.lloyd@rx.london  
07795 445 833

**LOIS BOND**  
lois.bond@rx.london  
07773 258 589

**IMOGEN PURVIS**  
imogen.purvis@rx.london  
07377 978 348

**YOUR COVENT GARDEN**  
**YOUR CARNABY**  
**YOUR CHINATOWN**  
**YOUR FITZROVIA**  
**YOUR SOHO**

**YOUR.SPACE**



Misrepresentation act 1967: RX London and Stage, for themselves and for the lessor(s) of this property whose agents they are, give notice that: 1. These particulars do not constitute any part of, an offer or contract. 2. None of the statements contained in these particulars are to be relied on as statements or representations of fact. 3. Any intending lessee must satisfy himself by inspection or otherwise as the correctness of each of the statements contained in these particulars. 4. The lessor(s) do not make or give and neither RX London and Stage, nor any person in their employment has any authority make or give, any representation or warranty whatever in relation to this property. Finance Act 1989: Unless otherwise stated all prices and rents are quoted exclusive of VAT Property Misdescription Act 1991: These details are believed to be correct at the time of compilation but may be subject to subsequent amendment. Brochure and photographs. April 2024. Designed by www.darwooddesign.com