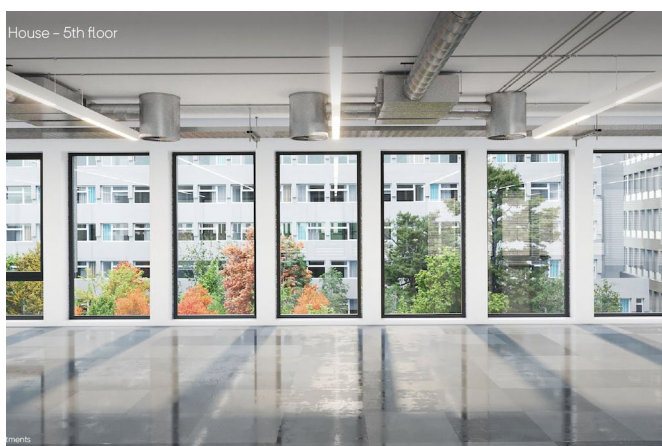


London

Maple, 149 Tottenham Court Road, W1T

Maple is undergoing a comprehensive refurbishment to deliver newly specified office floors, a brand new reception and an urban forest



Summary

Demise 8 Floors

Size 7,031 to 68,382 sq ft (653.20 to 6,352.90 sq m)

Viewing strictly by prior appointment with Colliers International through: 020 7935 4499

House – Typical office floor



Amenities

- Comprehensively refurbished space
- Typical 2.8 meter floor to soffit heights
- New HVAC system
- New raised access floors
- Brand new reception
- New best in class end of trip facilities with ramp access
- New urban forest of 40,000 sq ft
- Car parking

Floor Areas & Outgoings

The accommodation comprises the following areas:

Name	sq ft	sq m	Availability
5th - Block A	8,474	787.26	Under Offer
5th - Block B	7,031	653.20	Available
4th - Block A	8,216	763.29	Available
4th - Block B	7,055	655.43	Available
3rd - Block A	8,315	772.49	Coming Soon
3rd - Block B	8,465	786.42	Coming Soon
2nd - Block A	10,423	968.33	Coming Soon
2nd - Block B	10,403	966.47	Coming Soon
Total	68,382	6,352.89	



Contact us

All appointments to view must be arranged via joint sole agents, Colliers International, through:

Sophie Crosbie

sophie.crosbie@colliers.com
07936 338778

Tom Wildash

tom.wildash@colliers.com
+44 (0)7825 454 808

Mark Radford

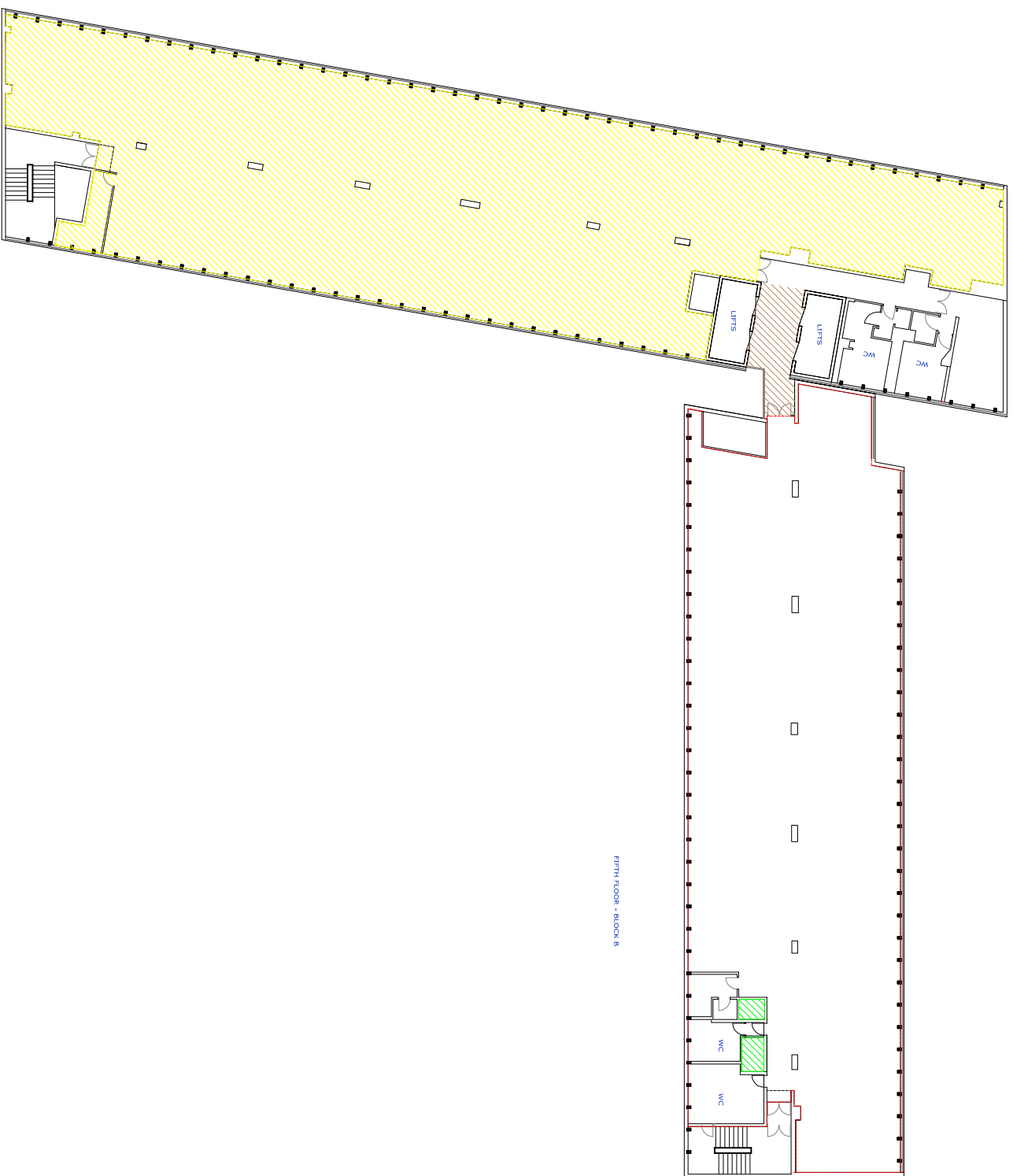
mark.radford@colliers.com
07730 318 148

Charlie Montgomery

charles.montgomery@colliers.com
07769336538

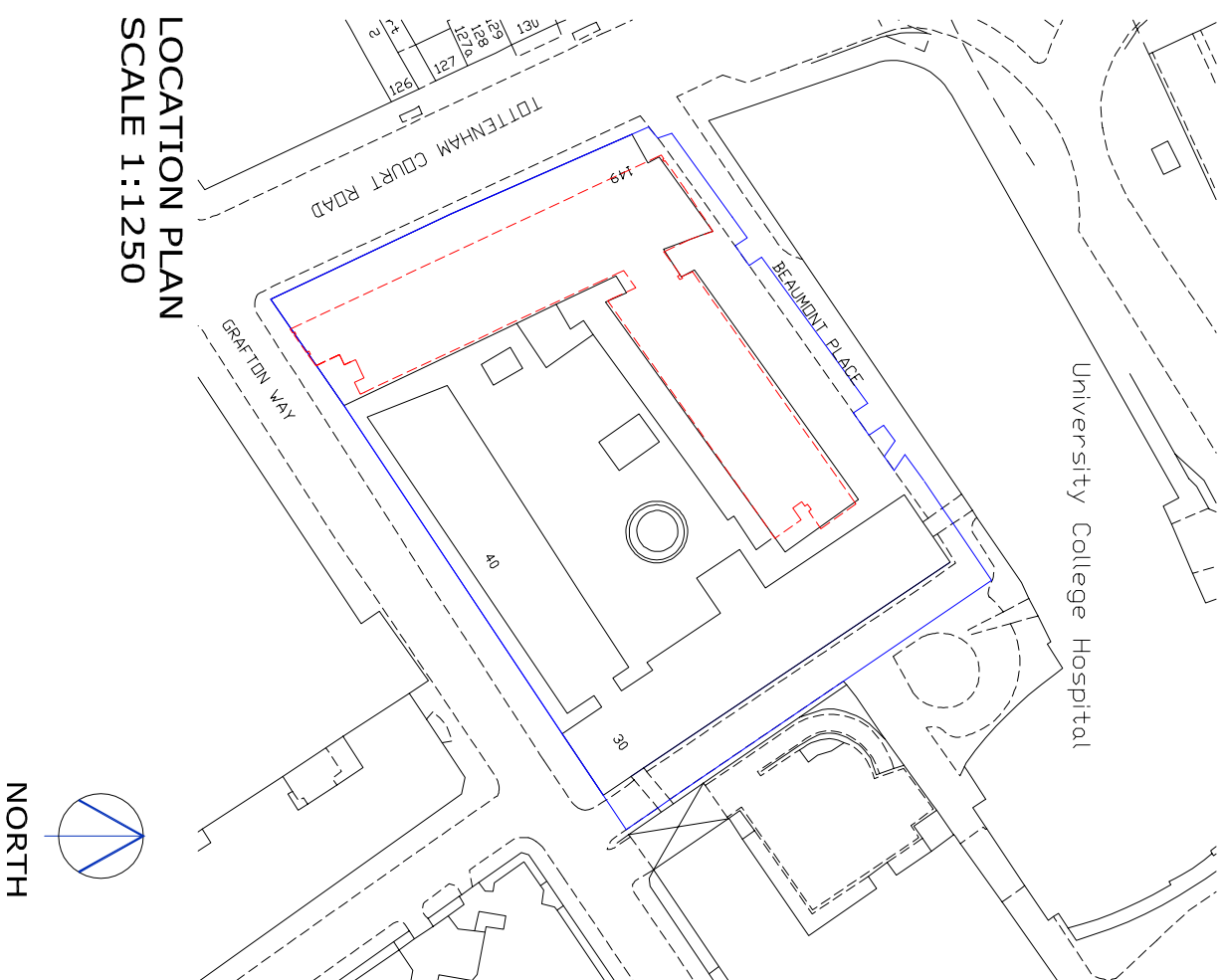
collierslondon.com

020 7935 4499



FIFTH FLOOR - BLOCK B

LOCATION PLAN
SCALE 1:1250



client	LAZARI INVESTMENTS LTD	
	address	MAPLE HOUSE 149 TOTTENHAM COURT ROAD LONDON W1
location	FIFTH FLOOR LEASE PLAN	
date	JULY 2012	scale
dwg. no.	MM032-5	revision
		1:400 on A3