

# INGATEWORKS

## BATTERSEA

A NEW CONTEMPORARY OFFICE BUILDING 2,865 – 12,709SQ FT



**INGATE WORKS OFFERS 12,709SQ FT OF BOTH NEW AND FULLY FITTED OFFICE SPACE ACROSS THREE FLOORS SITUATED WITHIN ITS OWN PRIVATE COURTYARD.**

Conveniently located to benefit from the regeneration of Battersea and Nine Elms and with excellent transport links into both Victoria and Waterloo, Ingate Works provides the rare opportunity for a business to occupy a new office building within its own private gated courtyard.





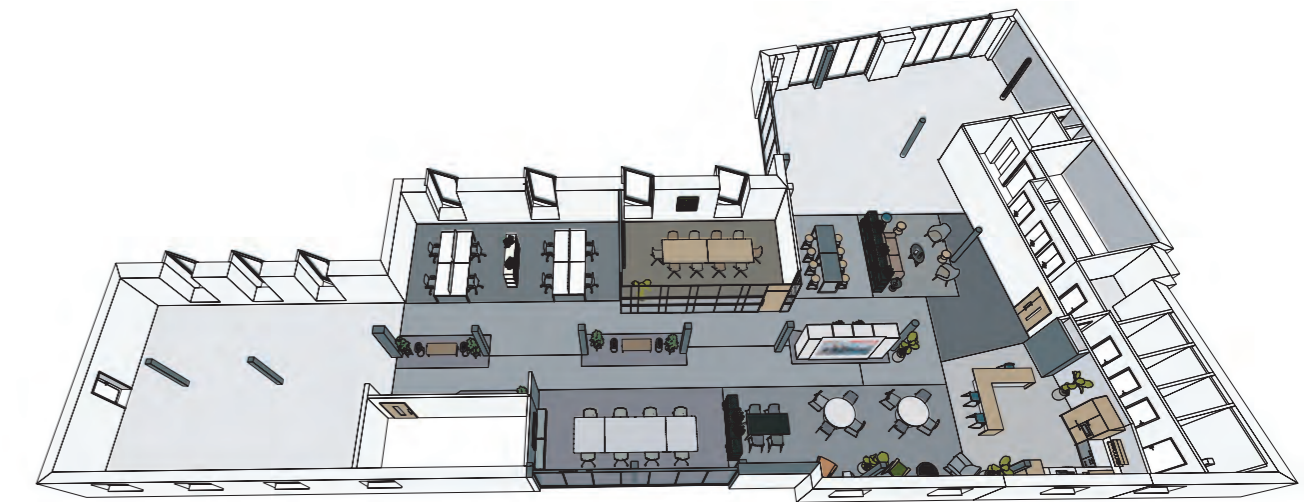
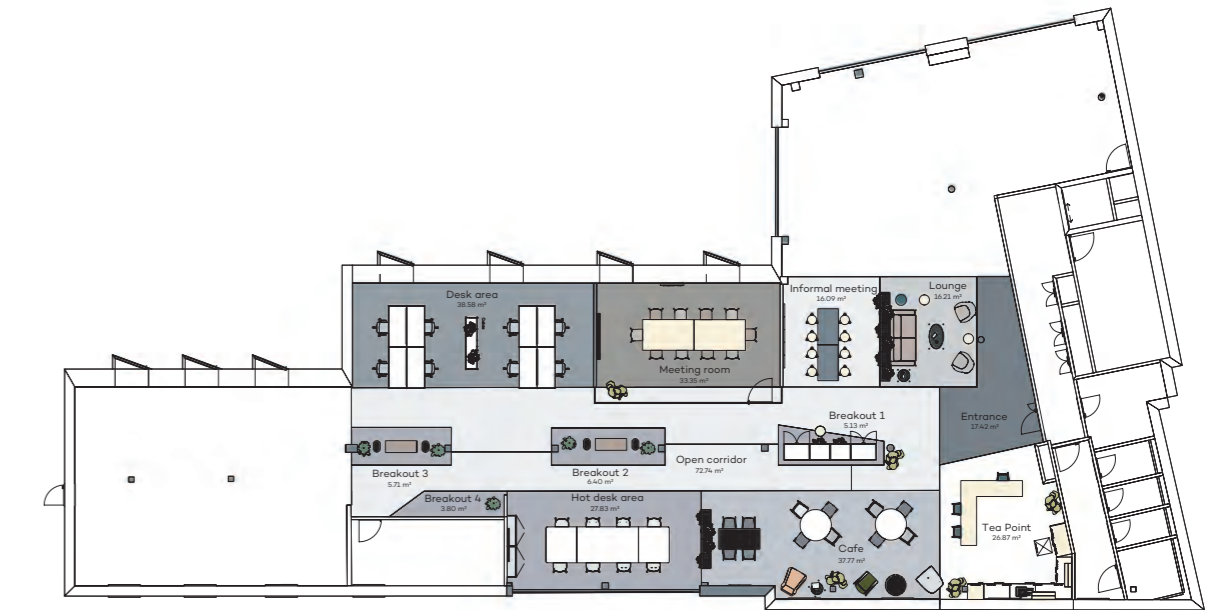
**FIRST FLOOR FITTED OFFICE SPACE.**

## FITTED SPECIFICATION

Space for up to 50 people with the ability to add more desks.

Flexible opportunities within the unfurnished areas.

Desks	8
Hot desks	8
10 person meeting room	1
10 person informal meeting room	1
Lounge	1
Breakout areas	4
Tea point	1
Café	1



Part first floor - Perspective view



## DESCRIPTION

With full height glazing to large sections of the floors and generous floor to ceiling heights, Ingate Works provides modern floorplates with an abundance of natural light throughout.

Exposed columns and suspended lighting will enhance the feeling of volume to create a flexible workspace.

### CAT A SPECIFICATION

---

Plasterboard ceilings

---

LED lighting

---

VRF air conditioning

---

150mm raised floors

---

Passenger lift

---

Showers

---

Bicycle parking

---

2 car parking spaces

---

1:10 sq m occupancy

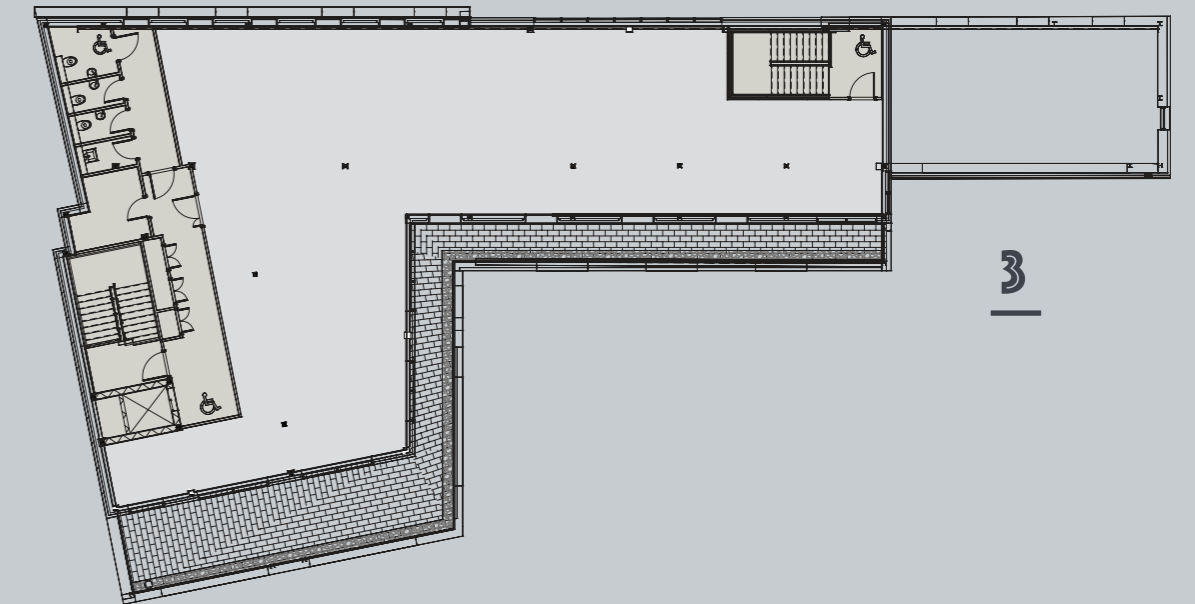
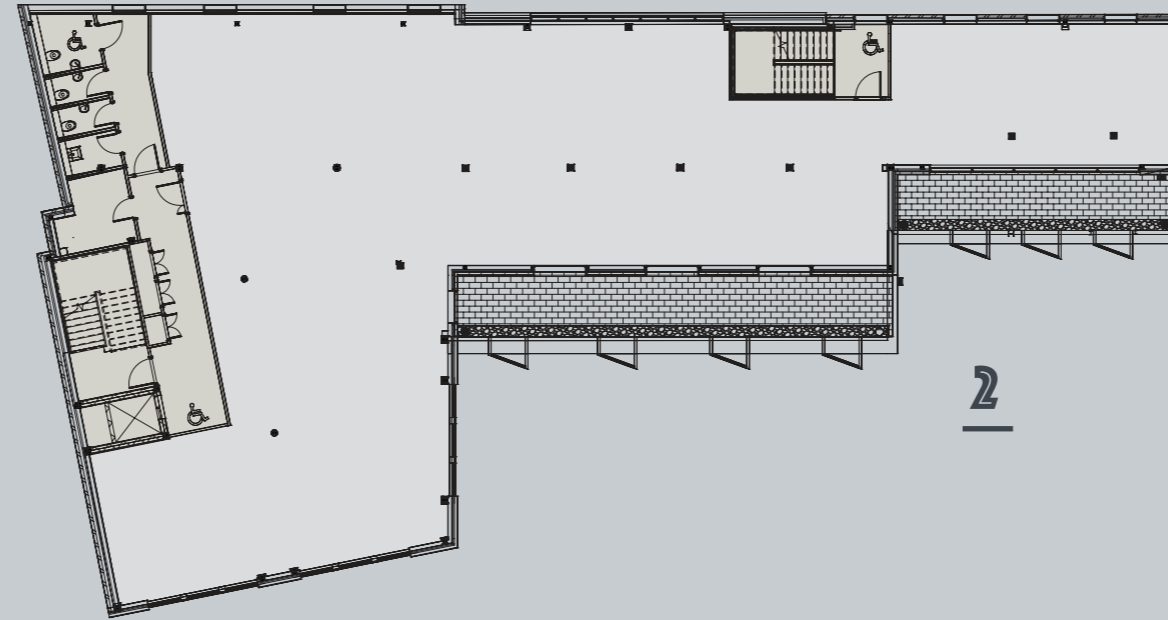
---



## FLOOR PLANS

### FLOOR AREAS (Net Internal Areas)

Third floor	2,865 sq ft	<b>AVAILABLE</b>
Second floor	4,529 sq ft	<b>AVAILABLE</b>
First floor	5,315 sq ft	<b>AVAILABLE</b>
Ground floor	5,182 sq ft	<b>NOW LET</b>
<b>Total</b>	<b>17,891 sq ft</b>	



## EXCELLENT AMENITIES WITHIN A SHORT WALK.

For eating, drinking and entertaining Battersea Power Station and the local shops, bars and restaurants offers something for everyone. If you are looking for something a little quieter the 200 acres of green space at Battersea Park is only 5 minutes from your front door providing an oasis of calm to take a break for lunch or a run down the river.



### Amenities within a short walk of Ingate Works

- Battersea Park
- The Masons Arms
- No.29 Power Station West
- Megan's
- Wright Bros.
- Tapas Brindisa
- Fiume
- Sendero
- Vagabond Wines
- Battersea General Store
- Archlight Cinema
- Battersea Brewery
- Tonkotsu
- Boom Cycle
- Cinnamon Kitchen
- Gordon Ramsay Street Pizza
- Sainsbury's

**INGATE WORKS BENEFITS FROM RAPID LINKS INTO VAUXHALL, VICTORIA AND WATERLOO. THE NEW NORTHERN EXTENSION OFFERS DIRECT AND EASY ACCESS TO THE UNDERGROUND NETWORK.**



With the Northern Line extension now complete, connectivity has significantly improved. Battersea Power Station can be accessed within an 8 minute walk.

By Underground from Battersea Power Station	(estimated minutes)
London Bridge	10
Bank	14
Canary Wharf	19
King's Cross	22

By rail from Queenstown Road	(minutes)
Vauxhall	3
Clapham Junction	3
Waterloo	9
Richmond	19
Wimbledon	20

By rail from Battersea Park	(minutes)
Victoria	4
Clapham Junction	4
Balham	10
West Croydon	28

Walking time to stations from Ingate Works	(minutes)
Queenstown Road	1
Battersea Park	5
Battersea Power Station	8
Nine Elms	24
Vauxhall	30



**KEY**

- - Northern Line extension
- Northern Line
- Victoria Line
- Piccadilly Line
- District Line
- Bakerloo Line
- Jubilee Line
- National Rail

# INGATEWORKS

BATTERSEA LONDON SW8 3NS

[clowes-ingateworks.co.uk](http://clowes-ingateworks.co.uk)

**Available to let or for sale.**

**For further information**  
please contact the joint agents.



**Tom Wildash**

D: +44 (0) 20 7487 1849  
M: +44 (0) 7825 454 808  
E: [tom.wildash@colliers.com](mailto:tom.wildash@colliers.com)

**Tom Tregoning**

D: +44 (0) 20 7487 1813  
M: +44 (0) 7765 258 526  
E: [tom.tregoning@colliers.com](mailto:tom.tregoning@colliers.com)

**James Swan**

D: +44 (0) 20 7344 6980  
M: +44 (0) 7769 337 022  
E: [james.swan@colliers.com](mailto:james.swan@colliers.com)



**Andrew Cordery**

D: +44 (0) 20 7801 9021  
M: +44 (0) 7775 620 500  
E: [andrew.cordery@houstonlawrence.co.uk](mailto:andrew.cordery@houstonlawrence.co.uk)

**George Rowling**

D: +44 (0) 207 801 9027  
M: +44 (0) 7806 853 718  
E: [george.rowling@houstonlawrence.co.uk](mailto:george.rowling@houstonlawrence.co.uk)

Misrepresentation While every effort has been made to ensure that these particulars provide a true and fair summary of the development, they are not designed to create any legal relationships or actionable representations. You are expected to inspect and investigate with your legal advisors to satisfy yourself that the terms of any formal legal contract regulate any legal relationship that may arise in relation to this development. To the extent that this literature is found to give rise to any claim in law against any person or company in relation to the development that liability is excluded to the extent permitted by law from time to time. May 2021.

**Marc Freeman**

Director

[Marc.Freeman@clowes.co.uk](mailto:Marc.Freeman@clowes.co.uk)  
07973 681 267 • 01335 360 353

