



smoothmove
property



20 Clondberry Close

Tyldesley, Manchester, M29 8RE

£284,950

SMOOTHMOVE PROPERTY are delighted to present FOR SALE this superb THREE BEDROOM, DETACHED property. This MODERN presented family home is located within walking distance of excellent transport links including the V1 guided busway. Local amenities offered in the town centre and highly regarded schools are also in close proximity.

The accommodation briefly comprises of: Entrance hallway with DOWNSTAIRS CLOAKS/WC, Spacious LOUNGE, and LARGE KITCHEN/DINER to the rear with Bi folding doors onto the garden. And additional study room off the kitchen and utility with door through to the garage. To the upper floor are three GREAT SIZE bedrooms and a MODERN FAMILY BATHROOM.

Externally the property boasts front and rear gardens and a DRIVEWAY for off road parking and garage.

Gas central heating and double glazing throughout completes the package.

Early viewing is highly recommended! *

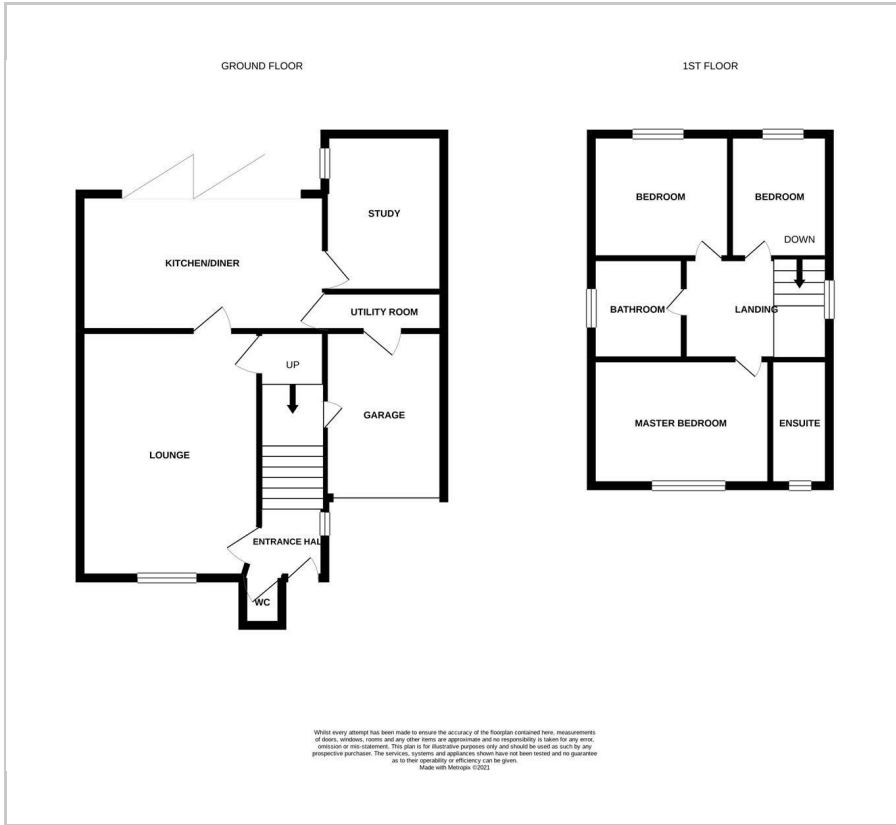
Viewing

Please contact our Smoothmove Property Office on 01942 914124 if you wish to arrange a viewing appointment for this property or require further information.

- 3 BEDROOM
- MODERN DETACHED
- SPACIOUS LOUNGE
- OPEN PLAN KITCHEN/ DINER
- STUDY ROOM
- UTILITY ROOM
- BEAUTIFUL REAR GARDEN
- CLOSE TO LOCAL AMMENTIES
- CATCHMENT AREA FOR WELL REGARDED SCHOOLS



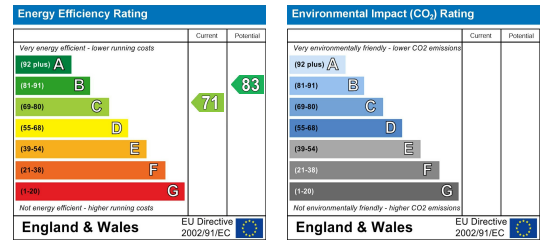
Floor Plan



Area Map



Energy Efficiency Graph



These particulars, whilst believed to be accurate are set out as a general outline only for guidance and do not constitute any part of an offer or contract. Intending purchasers should not rely on them as statements of representation of fact, but must satisfy themselves by inspection or otherwise as to their accuracy. No person in this firm's employment has the authority to make or give any representation or warranty in respect of the property.