



3 Bedrooms

House

Located
in Cambridge

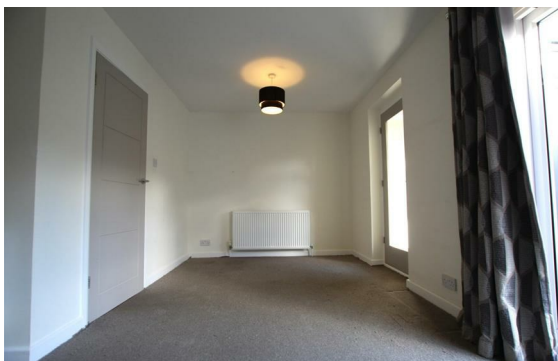
£2,000 Per Month



cambridge@morrisarmitage.co.uk

www.morrisarmitage.co.uk

01223 462013



This lovely three-bedroom terraced home on Grayling Close, Cambridge offers spacious, well-planned accommodation with modern finishes and excellent practical features, with excellent links to the city all while being set back from the main road in a quiet setting.

The property benefits from a large modern kitchen fitted with built-in appliances including a dishwasher, fridge freezer and washing machine, along with ample storage and workspace. To the rear is a generous living room with an additional area well suited to dining..

Upstairs, there are two large double bedrooms (one with a small built-in wardrobe) and a further single bedroom, served by a family bathroom with both bath and shower facilities, with a separate WC.

Energy Efficiency Rating: C

Agents Note: Whilst every care has been taken to prepare these particulars, they are for guidance purposes only. All measurements are approximate and are for general guidance purposes only and whilst every care has been taken to ensure their accuracy, they should not be relied upon and potential buyers/tenants are advised to recheck the measurements.



162 Histon Road
Arbury
Cambridge
CB4 3JP

01223 462013

cambridge@morrisarmitage.co.uk

www.morrisarmitage.co.uk