



2 Bedrooms

House

Located in

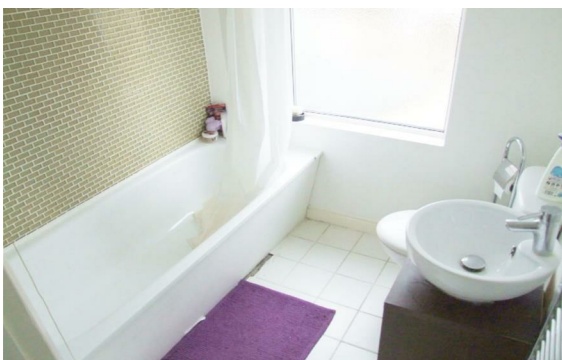
£1,300 PCM



[cambridge@morrisarmitage.co.uk](mailto:cambridge@morrisarmitage.co.uk)

[www.morrisarmitage.co.uk](http://www.morrisarmitage.co.uk)

01223 462013



\*\*\*NEW PHOTOS COMING SOON \*\*\*

Morris Armitage are pleased to present this Victorian terraced property located just a short walk from the city centre and moments from The River Cam. Available August, fully furnished.

Situated just off Newmarket Road, this property offers great access to many local amenities with easy access out of the city via the A14/M11. Accommodation comprises, large lounge, kitchen/diner, to the first floor there are two bedrooms and a family bathroom. Externally the property offers a low maintenance garden.

Council Tax Band C, EPC Rating D (68).

## Energy Efficiency Rating: D

Agents Note: Whilst every care has been taken to prepare these particulars, they are for guidance purposes only. All measurements are approximate and are for general guidance purposes only and whilst every care has been taken to ensure their accuracy, they should not be relied upon and potential buyers/tenants are advised to recheck the measurements.



162 Histon Road

Arbury

Cambridge

CB4 3JP

01223 462013

[cambridge@morrisarmitage.co.uk](mailto:cambridge@morrisarmitage.co.uk)

[www.morrisarmitage.co.uk](http://www.morrisarmitage.co.uk)