



1 Bedrooms

House

PCM

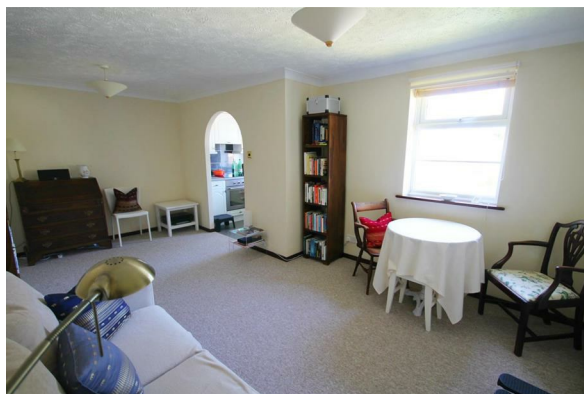
£1,175 PCM

Located in

Cambridge



[www.morrisarmitage.co.uk](http://www.morrisarmitage.co.uk)



Morris Armitage are delighted to present this well-proportioned first-floor apartment, ideally situated in a centrally located block just moments from Cherry Hinton High Street. Available unfurnished from mid-July, the property offers comfortable and convenient living in a sought-after area.

The accommodation comprises an entrance hallway leading to a spacious open-plan lounge and dining area, a modern fitted kitchen, a double bedroom with built-in wardrobes, a bathroom, and a generous storage cupboard.

Additional benefits include allocated off-road parking, providing ease and security for residents. This is an excellent opportunity for those seeking a well-located home with practical living space and amenities.

EPC - C (72)

Council tax band - B - Cambridge

## Energy Efficiency Rating

Agents Note: Whilst every care has been taken to prepare these particulars, they are for guidance purposes only. All measurements are approximate and are for general guidance purposes only and whilst every care has been taken to ensure their accuracy, they should not be relied upon and potential buyers/tenants are advised to recheck the measurements.

162 Histon Road

Arbury

Cambridge

CB4 3JP



[cambridge@morrisarmitage.co.uk](mailto:cambridge@morrisarmitage.co.uk)

01223 462013

[www.morrisarmitage.co.uk](http://www.morrisarmitage.co.uk)