



2 Bedrooms

House

Located  
in Cambridgeshire

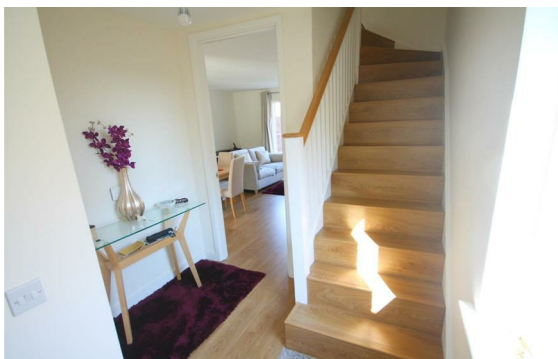
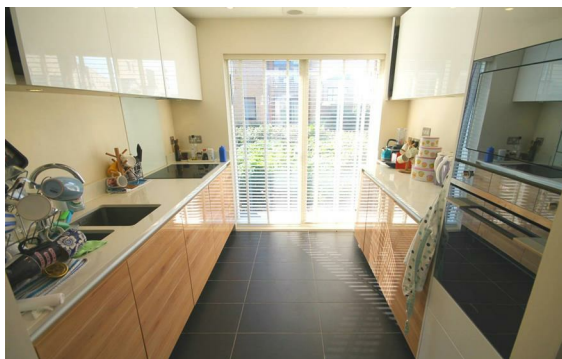
£1,750 PCM



[cambridge@morrisarmitage.co.uk](mailto:cambridge@morrisarmitage.co.uk)

[www.morrisarmitage.co.uk](http://www.morrisarmitage.co.uk)

01223 462013



Morris Armitage are delighted to offer this beautifully presented two-bedroom house located within a highly desirable development, the property is ideally positioned for convenient access to Addenbrooke's Hospital, the M11, and Cambridge City Centre, making it a perfect choice for professionals seeking both comfort and connectivity.

The ground floor features a welcoming entrance hallway, a cloakroom with WC, and a stylish fitted kitchen equipped with integrated Smeg appliances. To the rear of the property, an open-plan lounge and dining area provides a bright and versatile living space, complete with a large under-stairs storage cupboard.

Externally, the home benefits from a fully enclosed rear garden, ideal for relaxing or entertaining. There is also a dedicated bin storage area and a secure brick-built bike store. Gated side access leads to the front of the property, where one allocated parking space is provided.

## Energy Efficiency Rating:

Agents Note: Whilst every care has been taken to prepare these particulars, they are for guidance purposes only. All measurements are approximate and are for general guidance purposes only and whilst every care has been taken to ensure their accuracy, they should not be relied upon and potential buyers/tenants are advised to recheck the measurements.



162 Histon Road

Arbury

Cambridge

CB4 3JP

01223 462013

[cambridge@morrisarmitage.co.uk](mailto:cambridge@morrisarmitage.co.uk)

[www.morrisarmitage.co.uk](http://www.morrisarmitage.co.uk)