

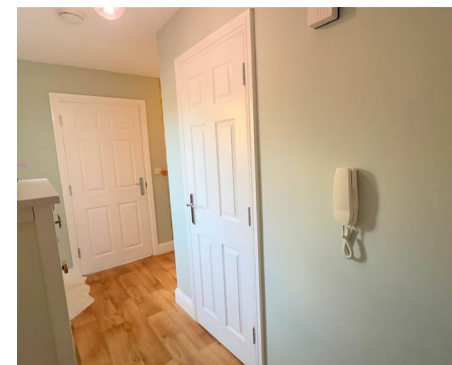


2 Bedrooms

House

Located
in Cambridge

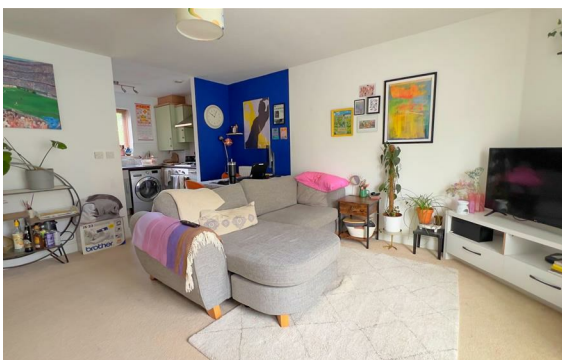
£1,500 PCM



cambridge@morrisarmitage.co.uk

www.morrisarmitage.co.uk

01223 462013



MIA
Morris Armitage

162 Histon Road
Arbury
Cambridge
CB4 3JP

01223 462013

cambridge@morrisarmitage.co.uk

Morris Armitage are excited to present this beautifully furnished ground floor flat in a modern development off Milton Road, available from mid-August. Perfectly situated near Cambridge North Railway Station, Cambridge Business Park, and Cambridge Science Park, with convenient access to regular bus services, cycling routes to Jesus Green, and the A14/M11.

EPC Rating C (78) // Council Tax Band C

Energy Efficiency Rating:

Agents Note: Whilst every care has been taken to prepare these particulars, they are for guidance purposes only. All measurements are approximate and are for general guidance purposes only and whilst every care has been taken to ensure their accuracy, they should not be relied upon and potential buyers/tenants are advised to recheck the measurements.

www.morrisarmitage.co.uk