

TO LET INDUSTRIAL UNIT

5B PARKFIELD INDUSTRIAL ESTATE

Battersea, London, SW11 5BA



Key Highlights

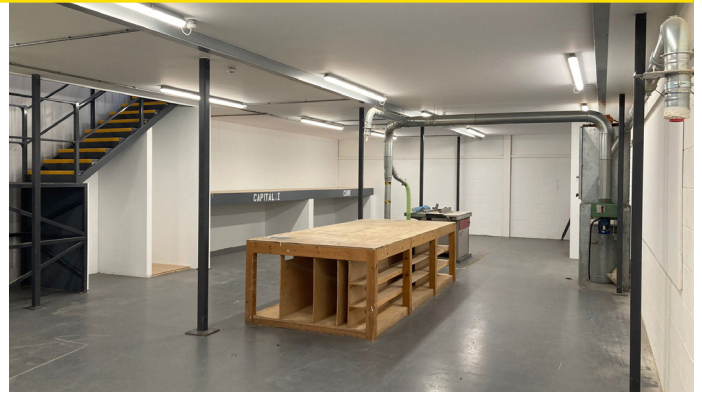
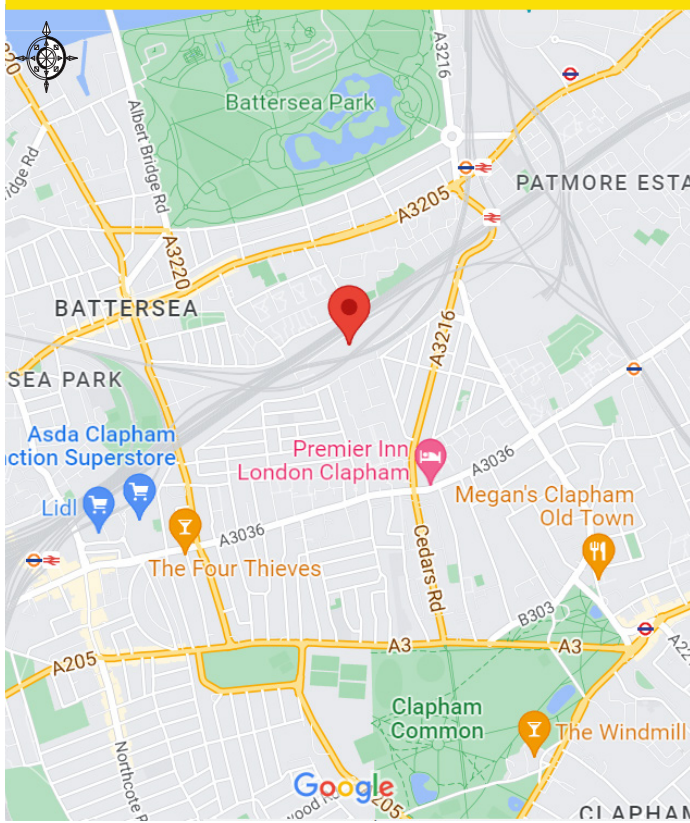
- Prime multi-let industrial estate
- Prominently located within well-established Parkfield Industrial Estate in Zone Two, Battersea
- 2 Parking Spaces
- Offering direct access to Central London and the surrounding boroughs via both Albert and Chelsea Bridge's
- 3 Phase electric supply

SAVILLS LONDON
33 Margaret Street
London W1G 0JD

+44 (203) 618 3619

[savills.co.uk](https://www.savills.co.uk)

The Savills logo, consisting of the word 'savills' in a lowercase, sans-serif font, with the 's' in red and the rest in black. It is set against a yellow square background.



Description

With the increased requirements of online retailers and last mile operators, this is an ideal last mile logistics and offer direct access to central London and surrounding boroughs. The warehouse is serviced by a roller shutter door, three phase power supply and boasts 6.7m ceiling heights. In addition the warehouse benefits from a mezzanine level, wc/s, kitchenette and two demised parking spaces.

FLOOR AREA	SQ FT	SQ M
Ground Floor	2,170	201.6
Mezzanine Floor	1,304	121.2
Total	3,474	322.8

Location

Subject property is positioned within the Parkfield Industrial Estate, Battersea. The area has excellent transport links with Clapham Junction (BR) approximately 1.5 miles to the west. A choice of further mainline stations including Queenstown Road and Battersea Park are

a short walking distance to the east. There are good local transport networks and Central London and the West End can be reached within 20 minutes by road.

Rent

£64,835 Pax

Term

For a term of 10 years commencing July 2018 (4.25 years remaining).

Business Rates

- Rateable Value (April 2023): £67,000
- UBR: £0.49
- Rates Payable (April 2023): £32,830

EPC

Rating B

Viewings

Viewings to be arranged via the Agents.

Contact

Oliver Hughes

Savills

+44 (0) 7815 032 104

oliver.j.hughes@savills.com

George Rowling

Houston Lawrence

+44 (0) 7806 853 718

George.Rowling@houstonlawrence.co.uk

IMPORTANT NOTICE

Maps are reproduced from the Ordnance Survey Map with the permission of the Controller of H.M. Stationery Office. © Crown copyright licence number 100022432 Savills (UK) Ltd, published for the purposes of identification only and although believed to be correct accuracy is not guaranteed.

Savills, their clients and any joint agents give notice that: 1. They are not authorised to make or give any representations or warranties in relation to the property either here or elsewhere, either on their own behalf or on behalf of their client or otherwise. They assume no responsibility for any statement that may be made in these particulars. These particulars do not form part of any offer or contract and must not be relied upon as statements or representations of fact. 2. Any areas, measurements or distances are approximate. The text, photographs and plans are for guidance only and are not necessarily comprehensive. It should not be assumed that the property has all necessary planning, building regulation or other consents and Savills have not tested any services, equipment or facilities. Purchasers must satisfy themselves by inspection or otherwise.

Designed and Produced by Savills Marketing: 020 7499 8644 | April 2024

savills