

Woodlands Dynevor Road, Skewen, SA10 6TW

Best Offers Around £139,950

House and land. The Site has been cleared vastly already throughout and ready to start your new project. There are Two options on site -

Option 1: Refurbish and extend existing house with detached garage (architectural drawings available) Ideal Forever home, holiday let or AirBNB with small holding which is a great investment.

Option 2: Demolition of existing house and design your own new build, With Full planning (outline) approved for your new build forever home with small holding.

Development site plan of existing



Planning approved Measurement For new build below

-

New build Executive House - 11m x 12m
Plus Garage / Annex 7m x 7m
Planning reference: P2020/0555

House



Architect drawings are available to view.
Planning reference: P2020/0555

Option 1

Refurbish and extend existing house with detached garage (architectural drawings available)
Ideal Forever home, holiday let or AirBNB with small holding which is a great investment.

Option 2

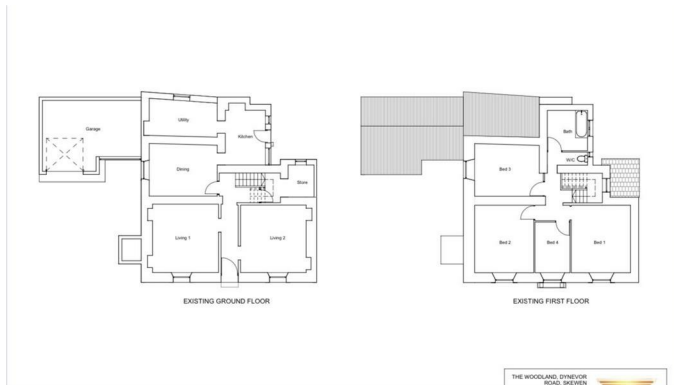
Option 2 - Demolition of existing house and design your own new build, With Full planning (outline) approved for your new build forever home with small holding.

Planning approved Measurement For new build below

-

New build Executive House - 11m x 12m
Plus Garage / Annex 7m x 7m

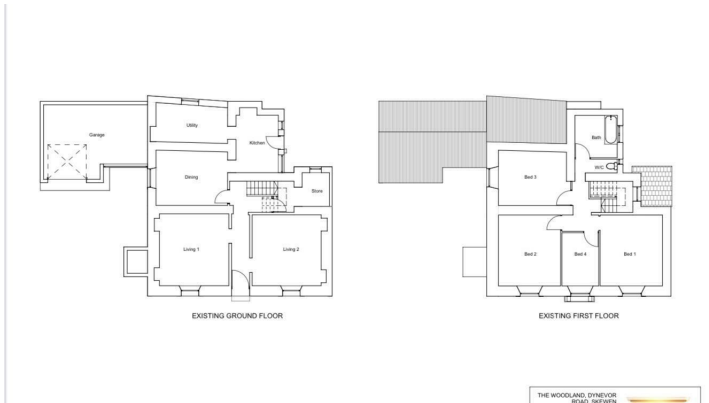
Architect drawings



View from the top access



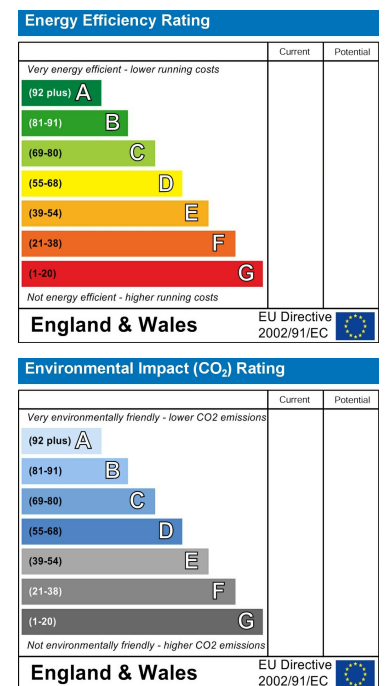
Floor Plan



Area Map



Energy Efficiency Graph



These particulars, whilst believed to be accurate are set out as a general outline only for guidance and do not constitute any part of an offer or contract. Intending purchasers should not rely on them as statements of representation of fact, but must satisfy themselves by inspection or otherwise as to their accuracy. No person in this firm's employment has the authority to make or give any representation or warranty in respect of the property.