

19 Pitchford Lane, Llandarcy, Neath, Neath Port Talbot, SA10 6FL

Asking Price £156,950

SET ON A MODERN DEVELOPMENT WITH A MIX OF PROPERTIES. OFFERS A GATED SINGLE GARAGE WITH PAVED BLOCKED DRIVEWAY, KITCHEN/DINER, LOUNGE AND CLOAKROOM WITH TWO BEDROOMS AND FAMILY BATHROOM. OFF ROAD PARKING FOR 2 CARS TO DRIVEWAY. OFFERS VACANT POSSESSION.

Entrance door

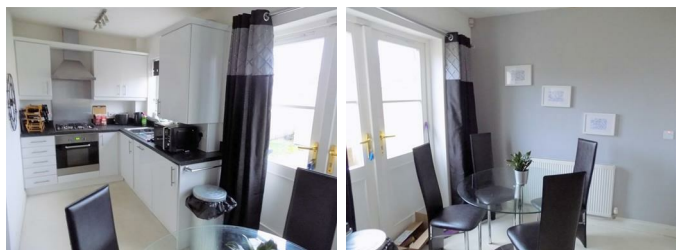
Stairs to the first floor and lounge.

Living Room 12'8" x 11'2" (3.87 x 3.41)



Window to front, spacious storage area, door to kitchen and radiator.

Kitchen/ Dining Area 14'10" x 9'11" (4.52 x 3.01)



Modern fitted kitchen with appliances to include dishwasher, washer/dryer, gas hob with extractor over, window to rear and french style doors to the dining area and radiator.

Cloakroom

Low level w,c radiator.

Landing



Storage cupboard.

Bedroom 1 8'9" x 14'10" (2.66 x 4.53)



Double room with window to front and radiator.

Bedroom 2 7'9" x 10'11" (2.35 x 3.33)

Window to rear and radiator.

Bathroom

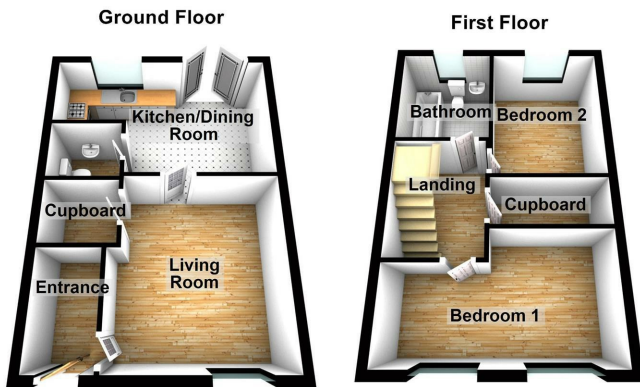


Garage with parking to driveway



Gated driveway with block paved drive leading to a single garage.

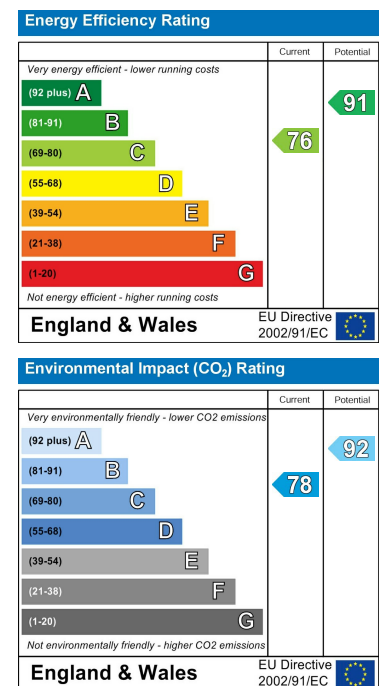
Floor Plan



Area Map



Energy Efficiency Graph



These particulars, whilst believed to be accurate are set out as a general outline only for guidance and do not constitute any part of an offer or contract. Intending purchasers should not rely on them as statements of representation of fact, but must satisfy themselves by inspection or otherwise as to their accuracy. No person in this firm's employment has the authority to make or give any representation or warranty in respect of the property.