



WOLSEY PARK

RAYLEIGH • ESSEX

This attractive four bedroom home features a spacious open plan living/dining area and fitted kitchen. Well-suited to families, this luxurious property benefits from an en suite to the principal bedroom. The first floor also hosts a further three bedrooms plus a family bathroom.



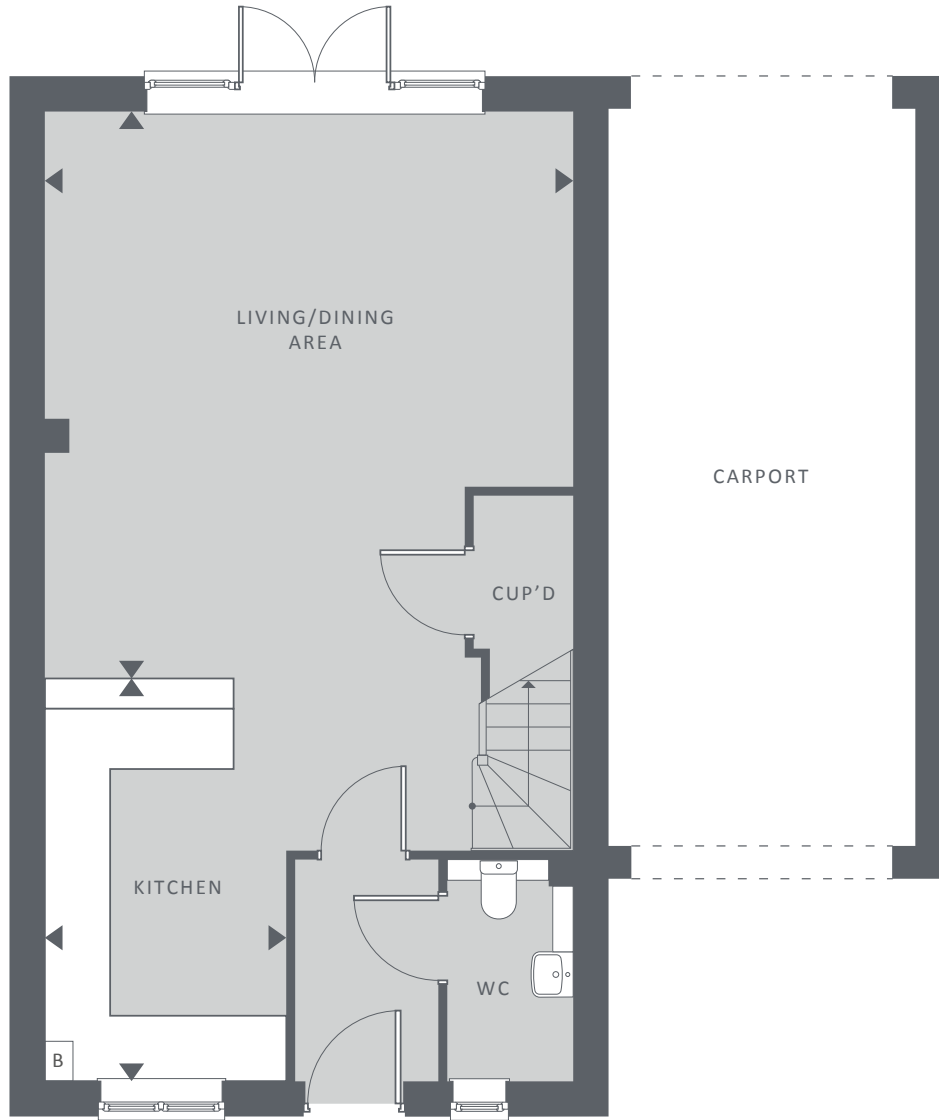
THE ROSEFINCH

4 BEDROOM HOME

COUNTRYSIDE
Places People Love

THE ROSEFINCH

TOTAL INTERNAL FLOOR SPACE 125.51 SQ M (1351 SQ FT)

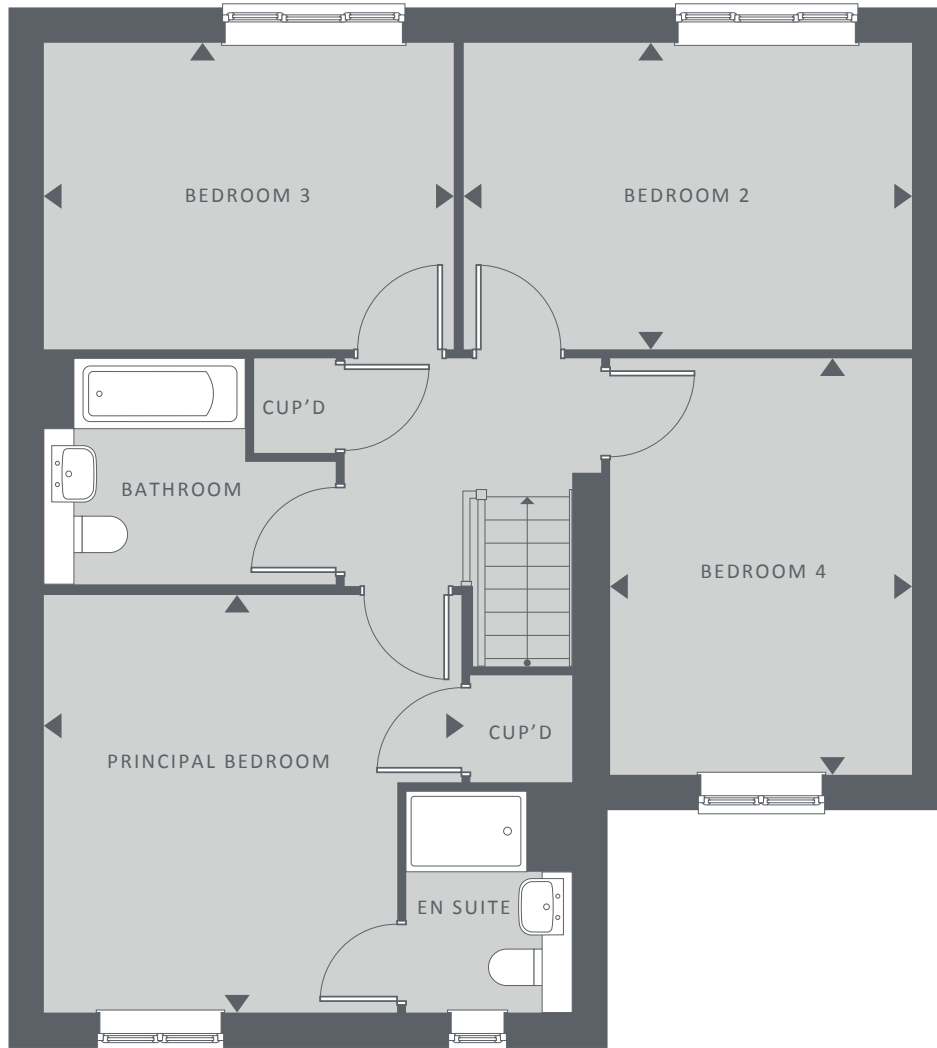


WOLSEY PARK | RAYLEIGH | S56 9RH

GROUND FLOOR

KITCHEN	4.00M X 2.40M	13'2" X 7'10"
LIVING/DINING AREA	5.64M X 5.25M	18'6" X 17'3"

A/C – AIRING CUPBOARD B – BOILER CUP'D – CUPBOARD WC – CLOAKROOM



FIRST FLOOR

PRINCIPAL BEDROOM	4.17M X 4.16M	13'8" X 13'8"
BEDROOM 2	4.45M X 3.05M	14'7" X 10'0"
BEDROOM 3	4.08M X 3.05M	13'5" X 10'0"
BEDROOM 4	4.14M X 3.00M	13'7" X 9'10"

This floorplan and computer generated image is indicative only and depicts a typical Rosefinch, some properties may vary significantly from that shown. All sizes are approximate with maximum finished dimensions. Countryside operates a policy of continuous product development and all room layouts may be subject to minor modifications. Kitchen and bathroom layouts are indicative. Radiator locations are not indicated. Floorplans are not shown to scale. Please refer to development layout to review garage/parking variations for each plot. Plot specification, internal and external finishes, dimensions, landscaping and differences to plots should be checked with a Sales Consultant before reservation. Countryside reserves the right to amend specifications as necessary.

WOLSEY PARK

RAYLEIGH

www.countrysideproperties.com

01268 855340

wolseypark@cpplc.com

Marketing Suite open daily from 10am - 5pm.
Rawreth Lane, Rayleigh, Essex SS6 9RH



COUNTRYSIDE

Places People Love