



Altenburg Gardens, SW11
£650,000

Dexters



Altenburg Gardens, SW11

An impressive raised ground floor, one double bedroom period conversion set within a beautiful Victorian home, presented in immaculate order throughout. Arranged to include a large, bright and airy reception room, eat-in kitchen with integrated appliances, an oversized and mature private garden, one double bedroom and a modern bathroom.

As you enter through the front door you are greeted by a warm and welcoming hallway. The reception room is located at the front with high ceilings, bespoke cabinetry, period features and comfortable seating areas including beautiful bay window. The double bedroom is nestled just behind with built in storage. The modern bathroom is to the rear of the property as is the eat-in kitchen with plenty of space to dine. The oversized and mature private garden is accessed through the kitchen, a great area for entertaining. The garden has perennial borders and multiple seating areas making it a tranquil, quiet oasis and the perfect space for relaxing.

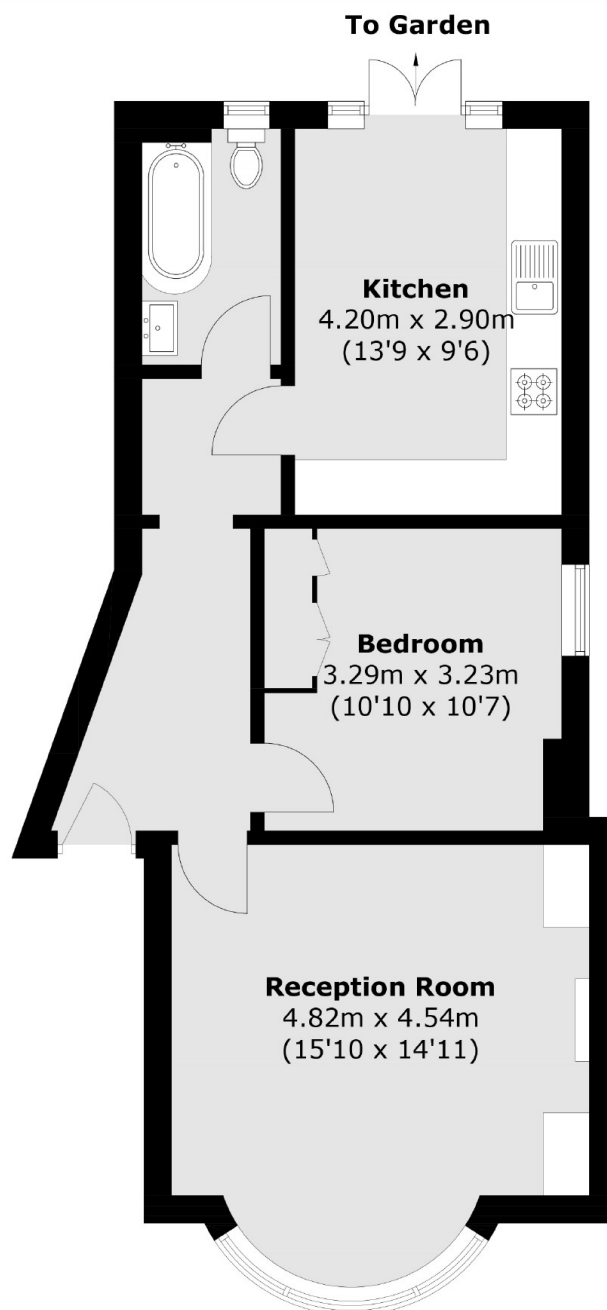
Altenburg Gdns is a sought after quiet residential street located North of Clapham Common. It is situated in the catchment areas for some of the best schools; Belleville Primary School, Eaton House, Parkgate House, and Belleville Wix Academy and is a short stroll away from both Clapham Junction overground and Clapham Common Tube Station.

Features

- Victorian Conversion
- Large Reception Room
- Eat-In Kitchen
- One Double Bedroom
- Modern Bathroom
- Oversized Private Garden



Altenburg Gardens, London, SW11



Total area (approx.): 56.5 sq. m (608.2 sq. ft)

Dexters

Northcote Road
93 St. John's Road
London
SW11 1QY
Sales
020 7483 6333

Energy Rating: D. We aim to make our particulars both accurate and reliable. However they are not guaranteed; nor do they form part of an offer or contract. If you require clarification on any points then please contact us, especially if you're traveling some distance to view. Please note that appliances and heating systems have not been tested and therefore no warranties can be given as to their good working order.

 **RICS** | Regulated
Estate Agent
and Letting Agent

[dexters.co.uk](https://www.dexters.co.uk)