



York Road, SW11
£650,000

Dexters



York Road, SW11

An impressive, top floor, two double bedroom new-build apartment on well-connected York Road, offering a spacious open-plan kitchen, dining and reception area that opens onto a private balcony with far-reaching views across the London skyline. The apartment also benefits from an allocated off-street parking space, access to communal rooftop gardens and has high ceilings.

The apartment opens into a welcoming hallway leading to a spacious open-plan reception room/kitchen, designed for modern living with ample space for dining and entertaining. From here, doors open onto a private balcony, ideal for morning coffee, evening drinks or simply enjoying the skyline views. There are two well-proportioned double bedrooms, filled with natural light, and a stylish family bathroom completes the layout.

The development has excellent transport links with both Clapham Junction and Wandsworth Town stations only a short walk away. Nearby Clapham and Wandsworth offer an array of retail and leisure facilities and Battersea Park/Power Station are also close by.

Features

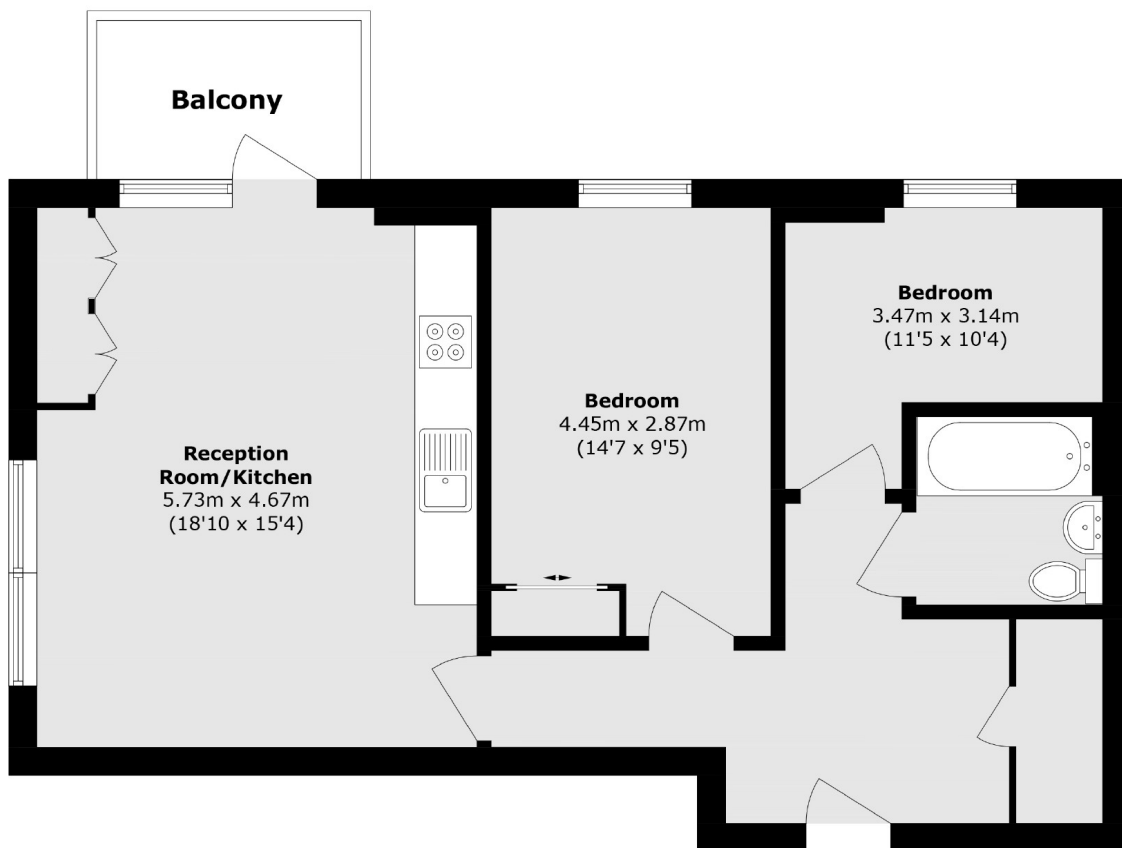
- Open Plan Reception/Kitchen
- Two Double Bedrooms
- Private Balcony
- Communal Rooftop Gardens
- Superb Location
- Allocated Parking Space







York Road, London, SW11



Total area (approx.): 68.0 sq. m (731.9 sq. ft)

Balcony area (approx.): 4.8 sq. m (51.6 sq. ft)

Dexters

Northcote Road
93 St. John's Road
London
SW11 1QY
Sales
020 7483 6333

Energy Rating: B. We aim to make our particulars both accurate and reliable. However they are not guaranteed; nor do they form part of an offer or contract. If you require clarification on any points then please contact us, especially if you're traveling some distance to view. Please note that appliances and heating systems have not been tested and therefore no warranties can be given as to their good working order.

 **RICS** | Regulated
Estate Agent
and Letting Agent

[dexters.co.uk](https://www.dexters.co.uk)